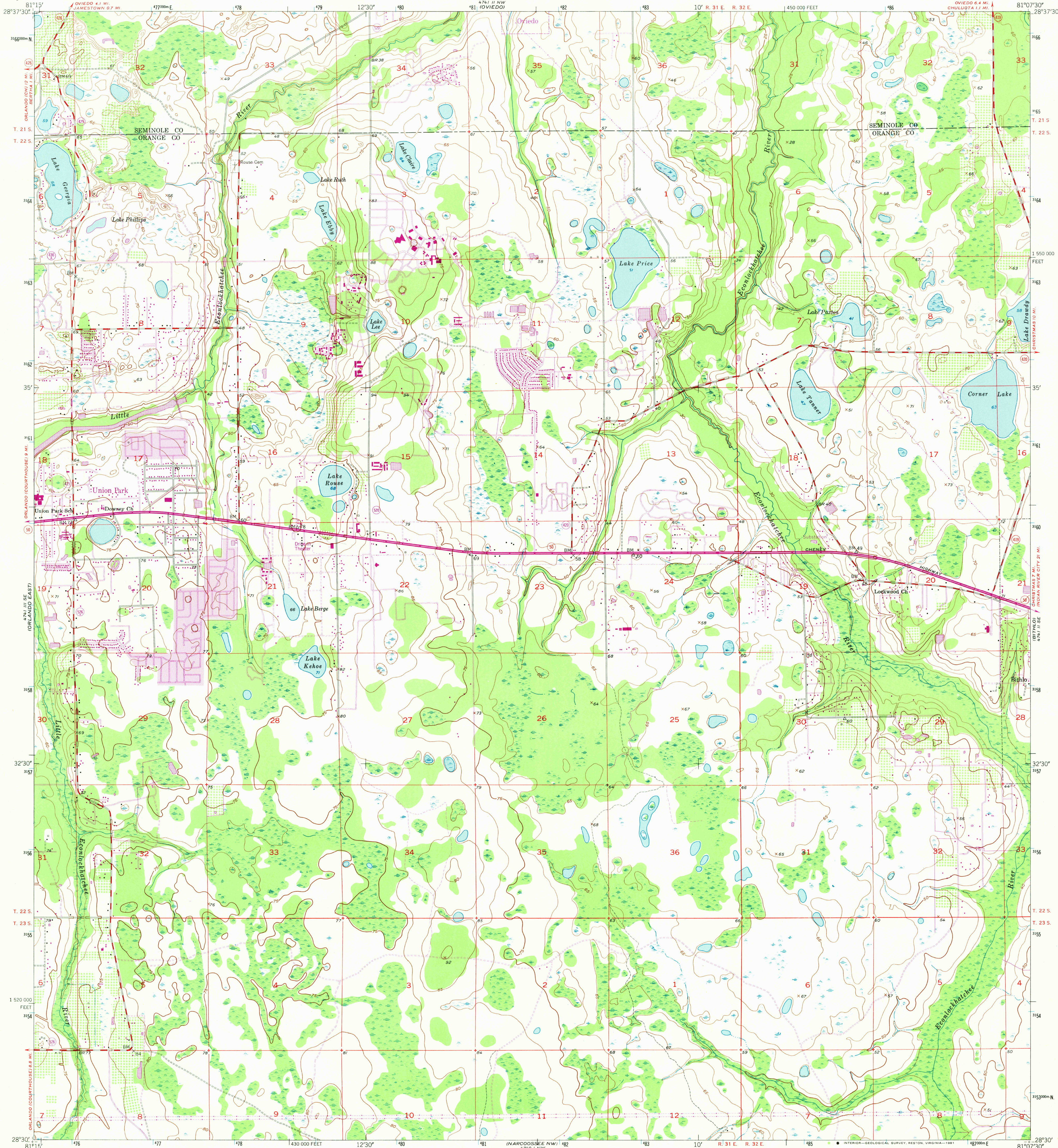
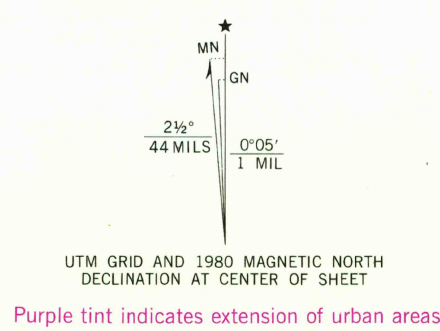


UNITED STATES  
DEPARTMENT OF THE INTERIOR  
GEOLOGICAL SURVEY

OVIEDO SW QUADRANGLE  
FLORIDA  
7.5 MINUTE SERIES (TOPOGRAPHIC)



Maped, edited, and published by the Geological Survey  
Control by USGS and USC&GS  
Culture and drainage in part compiled by U. S. Corps of Engineers  
and Geological Survey from aerial photographs taken 1951  
Topography by plane-table surveys 1952-1953  
Polyconic projection  
10,000-foot grid based on Florida coordinate system,  
east zone  
1000-meter Universal Transverse Mercator grid ticks,  
zone 17, shown in blue. 1927 North American Datum  
To place on the predicted North American Datum 1983  
move the projection lines 27 meters south and  
19 meters west as shown by dashed corner ticks  
Revisions shown in purple compiled from aerial photographs  
taken 1977 and other source data. This information not  
field checked. Map edited 1980



THIS MAP COMPLIES WITH NATIONAL MAP ACCURACY STANDARDS  
FOR SALE BY U. S. GEOLOGICAL SURVEY, RESTON, VIRGINIA 22092  
A FOLDER DESCRIBING TOPOGRAPHIC MAPS AND SYMBOLS IS AVAILABLE ON REQUEST



ROAD CLASSIFICATION  
Heavy-duty 4 LANE 6 LANE Light-duty  
Medium-duty 4 LANE 6 LANE Unimproved dirt  
U. S. Route State Route

OVIEDO SW, FLA.  
N2830-W8107.5/7.5  
1953  
PHOTOREVISED 1980  
DMA 4741 II SW-SERIES Y847

MAY 28 1981  
2630