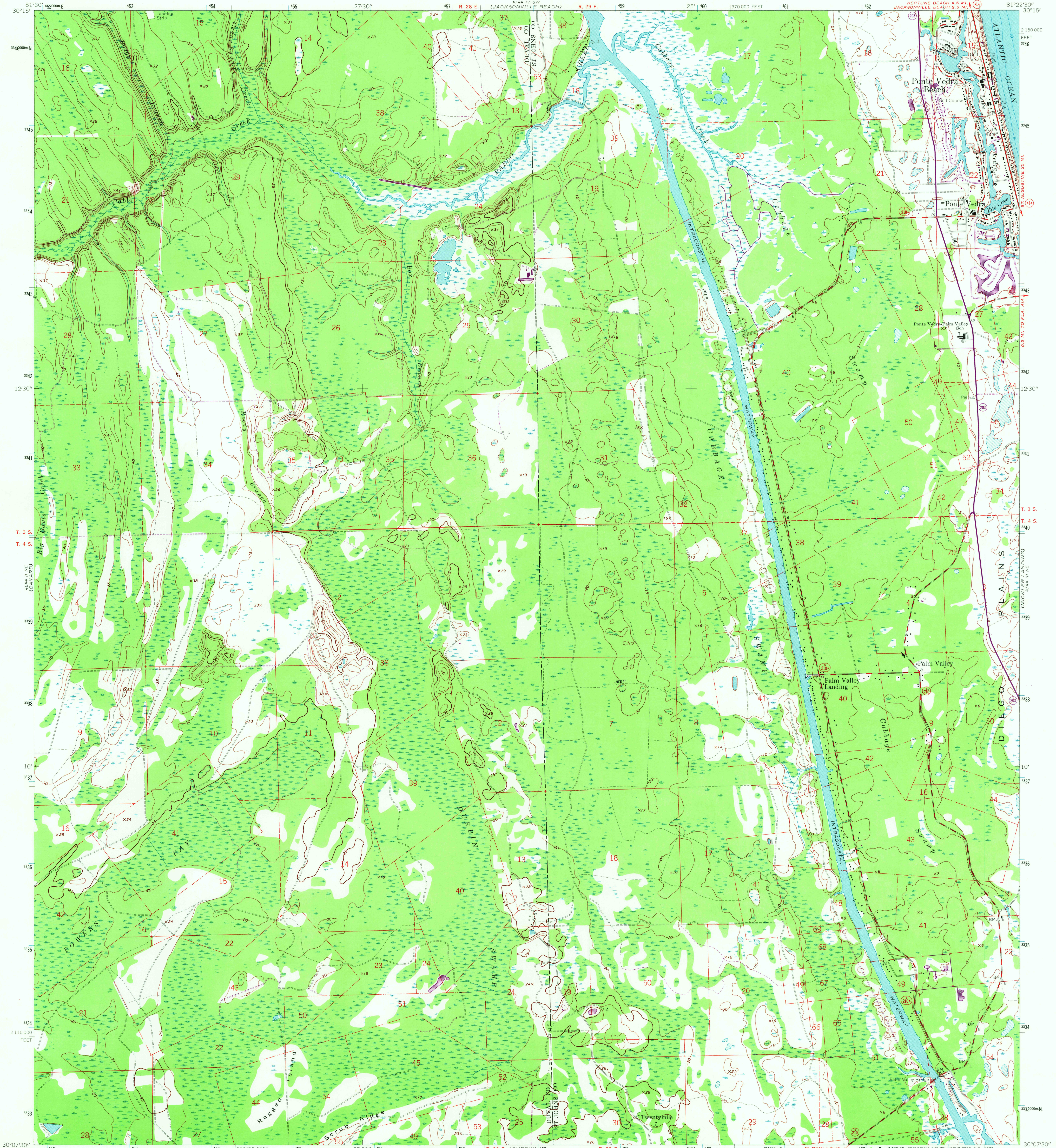


Sheet 25
(WASHINGTON)

UNITED STATES
DEPARTMENT OF THE INTERIOR
GEOLOGICAL SURVEY

PALM VALLEY QUADRANGLE
FLORIDA
7.5 MINUTE SERIES (TOPOGRAPHIC)



Mapped by the U. S. Coast and Geodetic Survey
Edited and published by the Geological Survey
Control by USGS, USC&GS, and Florida Geodetic Survey
Planimetry by photogrammetric methods from aerial photographs
taken 1949. Topography by planimetric surveys 1951
Revised by the Geological Survey from aerial photographs
taken 1963. Field checked 1964
Selected hydrographic data compiled from USC&GS Chart 1243 (1962)
This information is not intended for navigational purposes
Polyconic projection. 1927 North American datum
10,000-foot grid based on Florida coordinate system, east zone
1000-meter Universal Transverse Mercator grid ticks,
zone 17, shown in blue

UTM GRID AND 1970 MAGNETIC NORTH
DECLINATION AT CENTER OF SHEET
Revisions shown in purple compiled by the Geological Survey from
aerial photographs taken 1970. This information not field checked

SCALE 1:24,000
CONTOUR INTERVAL 5 FEET
DATUM IS MEAN SEA LEVEL
DEPTH CURVES IN FEET-DATUM IS MEAN LOW WATER
SHORELINE SHOWN REPRESENTS THE APPROXIMATE LINE OF MEAN HIGH WATER
THE MEAN RANGE OF TIDE IS APPROXIMATELY 4.8 FEET
THIS MAP COMPLIES WITH NATIONAL MAP ACCURACY STANDARDS
FOR SALE BY U. S. GEOLOGICAL SURVEY WASHINGTON, D. C. 20242
A FOLDER DESCRIBING TOPOGRAPHIC MAPS AND SYMBOLS IS AVAILABLE ON REQUEST

ROAD CLASSIFICATION
Heavy-duty Light-duty
Medium-duty Unimproved dirt
State Route
USGS HISTORICAL FILE TOPOGRAPHIC DIVISION
Palm Valley, Fla.
N3007.5-W8122.5/7.5
1964
PHOTO REVISITED 1970
AMS 4744 III NW-SERIES V847
JUN 13 1972
2335