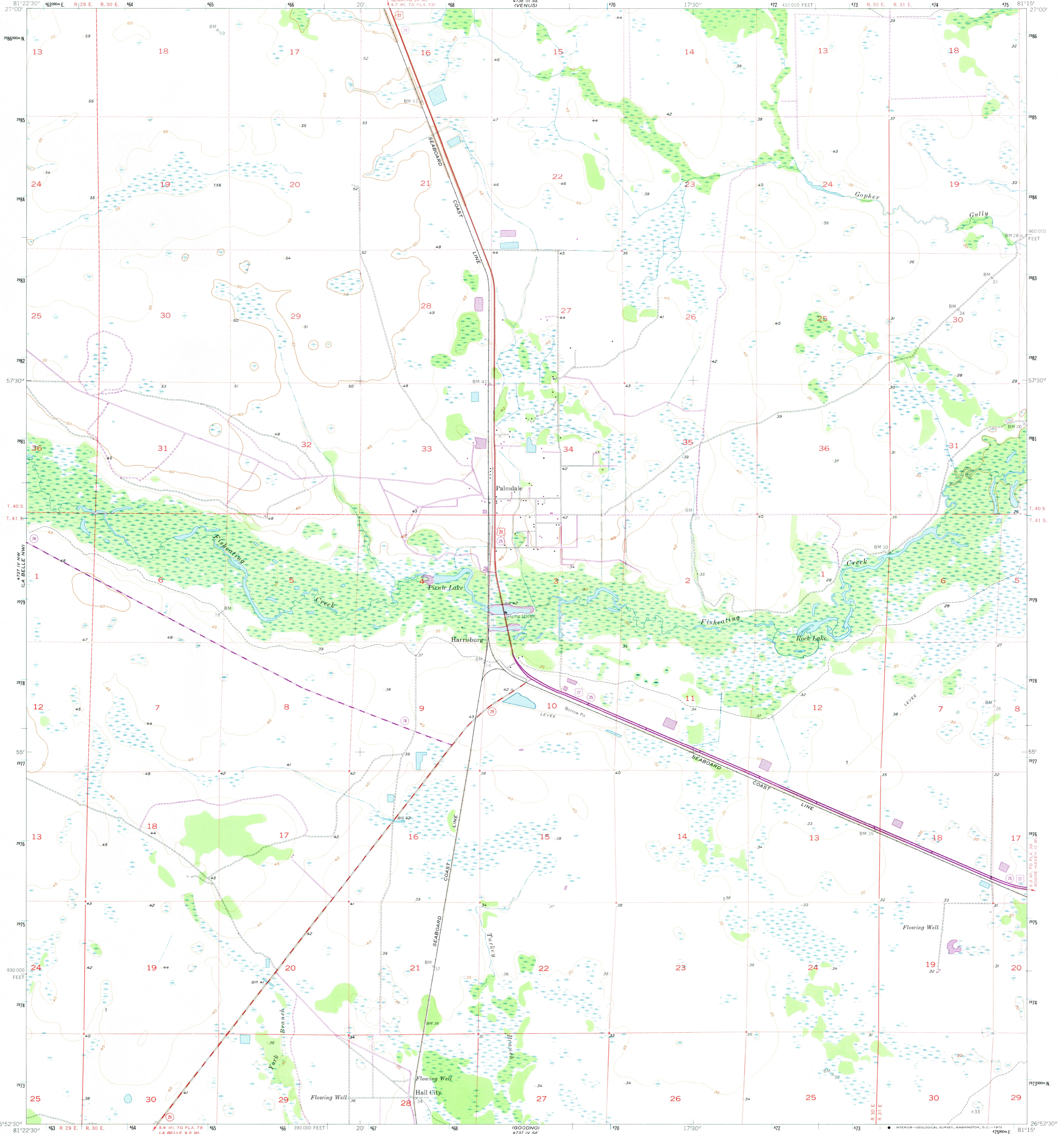


4737 IV SW (VENUS SW)  
4737 IV NW (LA BELLE NW)  
4737 IV SW (VENUS SW)  
4737 IV NW (LA BELLE NW)

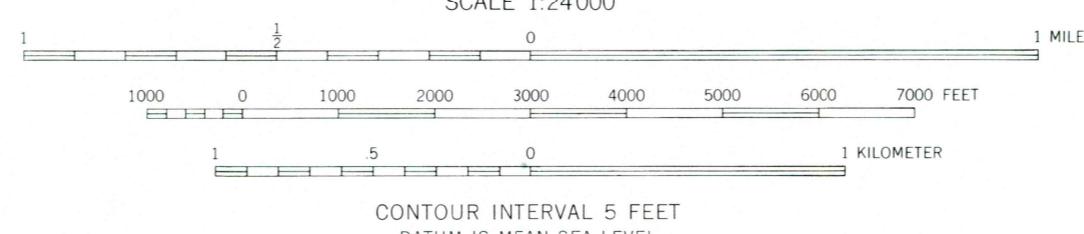
UNITED STATES  
DEPARTMENT OF THE INTERIOR  
GEOLOGICAL SURVEY

PALMDALE QUADRANGLE  
FLORIDA—GLADES CO.  
7.5 MINUTE SERIES (TOPOGRAPHIC)



Mapped, edited, and published by the Geological Survey  
Control by USGS, USC&GS, and USCE  
Culture and drainage in part compiled from aerial photographs  
taken 1951-1952. Topography by planetable surveys 1957-1958  
Polyconic projection. 1927 North American datum  
10,000-foot grid based on Florida coordinate system, east zone  
1000-meter Universal Transverse Mercator grid ticks,  
zone 17, shown in blue  
Dashed land lines indicate approximate locations  
Revisions shown in purple compiled from aerial photographs  
taken 1973. This information not field checked

UTM GRID AND 1973 MAGNETIC NORTH  
DECLINATION AT CENTER OF SHEET



THIS MAP COMPLIES WITH NATIONAL MAP ACCURACY STANDARDS  
FOR SALE BY U. S. GEOLOGICAL SURVEY, WASHINGTON, D. C. 20242  
A FOLDER DESCRIBING TOPOGRAPHIC MAPS AND SYMBOLS IS AVAILABLE ON REQUEST



ROAD CLASSIFICATION

Heavy-duty	Light-duty
Medium-duty	Unimproved dirt
U. S. Route	State Route

USGS  
HISTORICAL FILE  
TOPOGRAPHIC DIVISION

PALMDALE, FLA.  
N 2652.5-W 8115.7.5  
1958  
PHOTOREVISED 1973  
AMS 4737 IV NE—SERIES V847

DEC 19 1973

2645