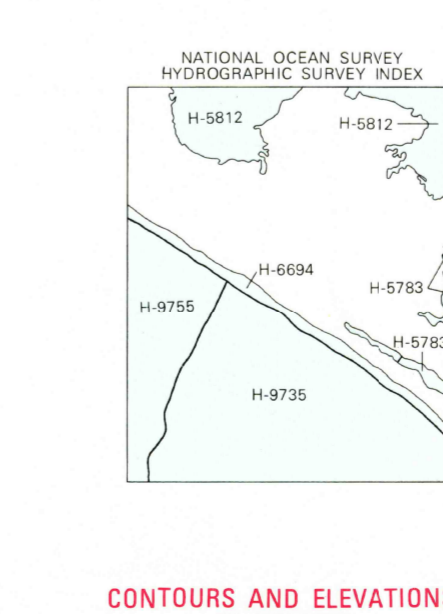
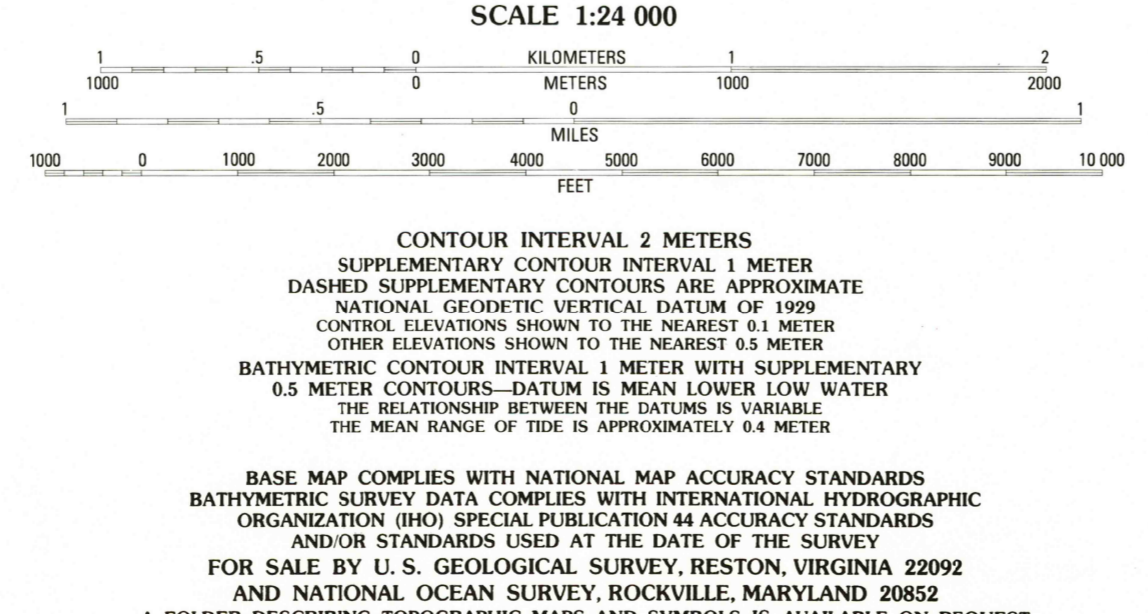
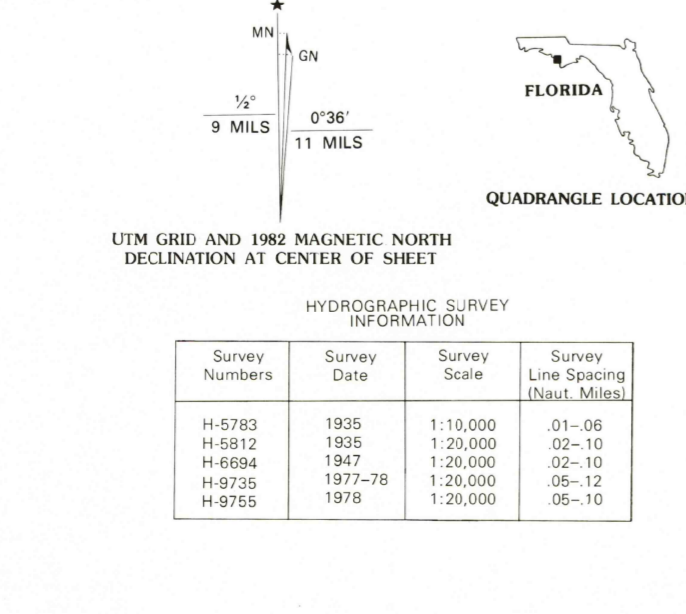


Produced by the United States Geological Survey and National Ocean Survey
Control by USGS and NOS-NOAA
Orthophotomaps prepared from aerial photograph taken January 23, 1976. Compiled by photogrammetric methods from aerial photographs taken January 1975 and planetable surveys 1976. Field checked 1976. Map edited 1982
Supersedes topographic map dated 1955
Bathymetry compiled by the National Ocean Survey from tide-coordinated hydrographic surveys.
Soundings compiled from NOS chart 11391 (1979)
This information is not intended for navigational purposes
Mean low water (dotted) line and mean high water (solid) line compiled by NOS from tide-coordinated aerial photographs
Apparent shoreline (outer edge of vegetation) shown by photomagnify
Projection and 10,000-foot grid ticks: Florida coordinate system, north zone (Lambert conformal conic)
1000-meter Universal Transverse Mercator grid, zone 16 1927 North American Datum
To place on the predicted North American Datum 1983 move the projection lines 19 meters south and 7 meters west as shown by dashed corner ticks
There may be private inholdings within the boundaries of the National or State reservations shown on this map



ROAD CLASSIFICATION

Primary highway, hard surface ——— Light-duty road, hard or improved surface ———

Secondary highway, hard surface - - - - - Unimproved road - - - - -

Trails - - - - -

Interstate Route U. S. Route State Route County Route

PANAMA CITY BEACH, FLA.
30085-B7-TB-024
1982
DMA 3844 III NE-SERIES V8470

RECORD COPY