

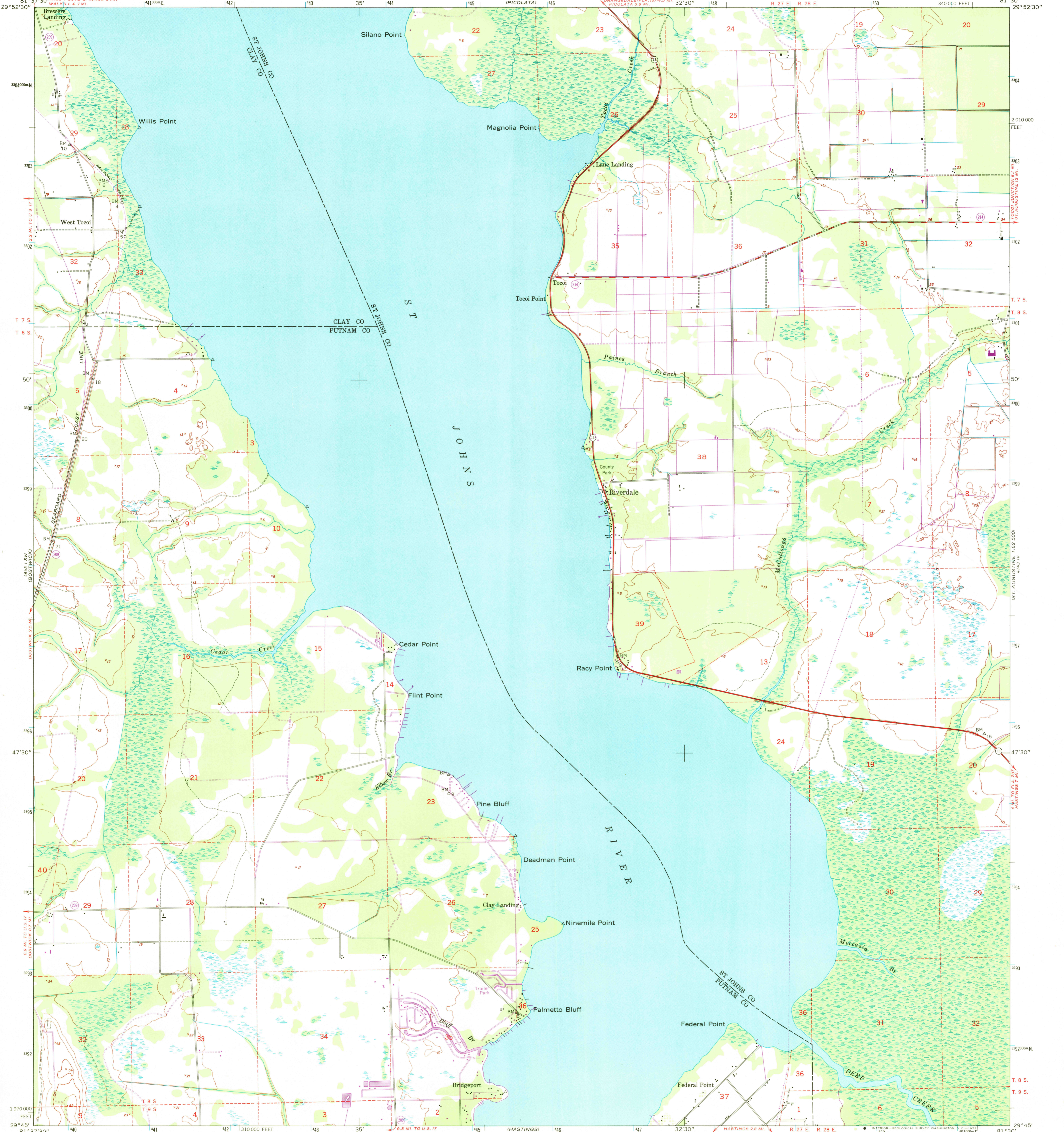
GREEN COVE SPRINGS 9 MI. WALKILL 4.7 MI.

UNITED STATES DEPARTMENT OF THE INTERIOR GEOLOGICAL SURVEY

UNITED STATES DEPARTMENT OF THE ARMY CORPS OF ENGINEERS

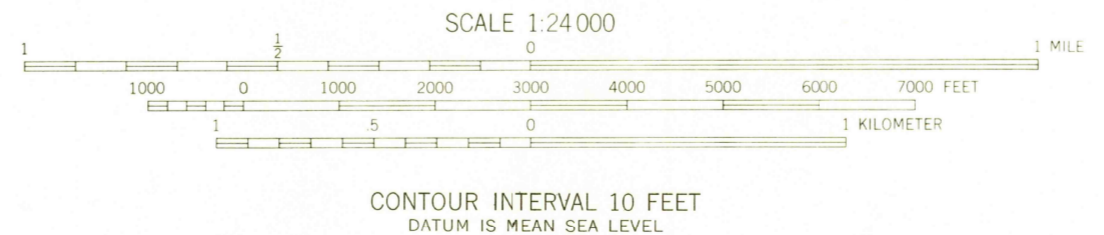
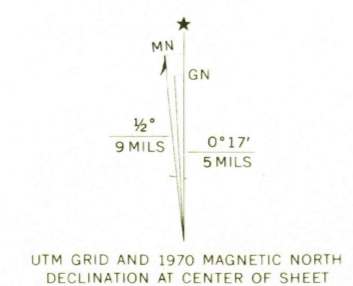
RIVERDALE QUADRANGLE FLORIDA 7.5 MINUTE SERIES (TOPOGRAPHIC) SE/4 BOSTWICK 15' QUADRANGLE

ST. AUGUSTINE 1.62 3000'



Mapped by the Army Map Service  
Published for civil use by the Geological Survey  
Control by USC&GS, USCE, and Florida Geodetic Survey  
Topography from aerial photographs by multiplex methods  
Aerial photographs taken 1946-1947. Field check 1949  
Polyconic projection. 1927 North American datum  
10,000-foot grid based on Florida coordinate system,  
east zone  
No distinction is made between barns, dwellings,  
commercial and industrial buildings  
1000-meter Universal Transverse Mercator grid ticks,  
zone 17, shown in blue  
Dashed land lines indicate approximate locations  
Unchecked elevations are shown in brown

Revisions shown in purple compiled by the Geological Survey from  
aerial photographs taken 1970. This information not field checked



CONTOUR INTERVAL 10 FEET  
DATUM IS MEAN SEA LEVEL



ROAD CLASSIFICATION

Heavy-duty	4 LANE 16 LANE	Light-duty
Medium-duty	4 LANE 6 LANE	Unimproved dirt
U. S. Route		State Route

RIVERDALE, FLA.  
SE/4 BOSTWICK 15' QUADRANGLE  
N 2945-W 8130/7.5

1949  
PHOTO REVISION 1970  
AMS 4643 1 SE-SERIES V847

THIS MAP COMPLIES WITH NATIONAL MAP ACCURACY STANDARDS  
FOR SALE BY U. S. GEOLOGICAL SURVEY, WASHINGTON, D. C. 20242  
A FOLDER DESCRIBING TOPOGRAPHIC MAPS AND SYMBOLS IS AVAILABLE ON REQUEST

USGS  
HISTORICAL FILE  
TOPOGRAPHIC DIVISION