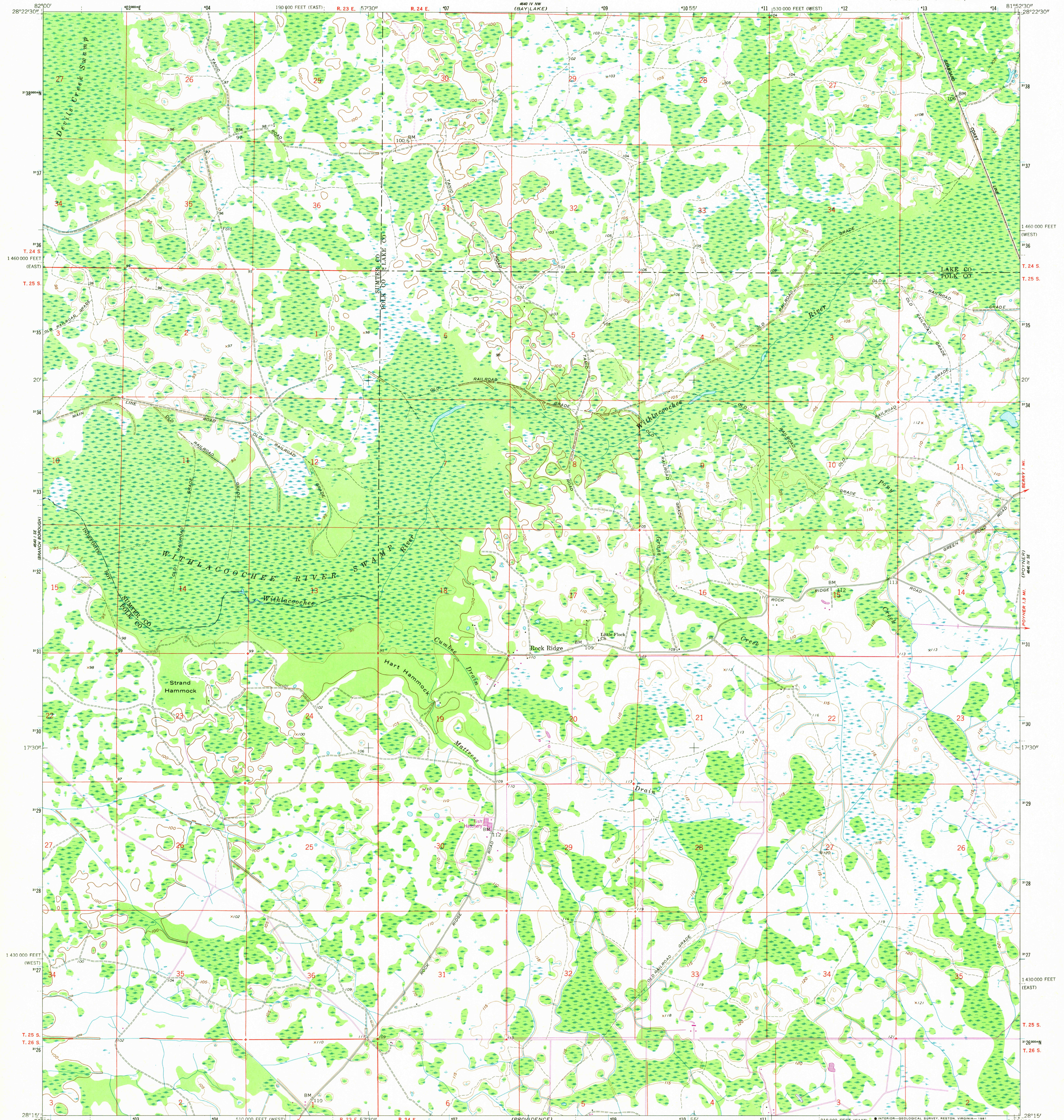


82° 00' 00" W  
28° 22' 30" N

UNITED STATES  
DEPARTMENT OF THE INTERIOR  
GEOLOGICAL SURVEY

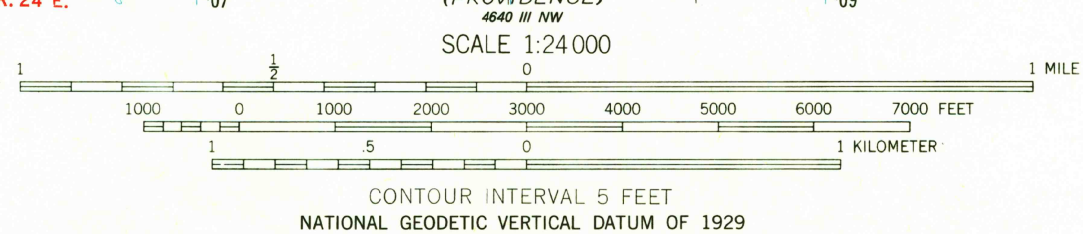
ROCK RIDGE QUADRANGLE  
FLORIDA  
7.5 MINUTE SERIES (TOPOGRAPHIC)

81° 52' 30" W  
28° 22' 30" N



Mapped, edited, and published by the Geological Survey  
Control by USGS and USC&GS  
Culture and drainage from controlled photomosaic  
Aerial photographs taken 1957 and 1958  
Topography by planetable surveys 1959 and 1960  
Polyconic projection  
10,000-foot grids based on Florida coordinate system,  
west and east zones  
1000-meter Universal Transverse Mercator grid ticks,  
zone 17, shown in blue. 1927 North American Datum  
To place on the predicted North American Datum 1983  
move the projection lines 28 meters south and  
17 meters west as shown by dashed corner ticks  
Certain land lines unsurveyed in T. 24 S.—R. 24 E.

Revisions shown in purple compiled from aerial photographs  
taken 1977 and other source data. This information not  
field checked. Map edited 1980



USGS  
HISTORICAL FILE  
NATIONAL MAPPING DIVISION

ROAD CLASSIFICATION  
Light-duty ——— Unimproved dirt - - - - -

AUG 3 1991  
0250

THIS MAP COMPLIES WITH NATIONAL MAP ACCURACY STANDARDS  
FOR SALE BY U. S. GEOLOGICAL SURVEY, RESTON, VIRGINIA 22092  
A FOLDER DESCRIBING TOPOGRAPHIC MAPS AND SYMBOLS IS AVAILABLE ON REQUEST

ROCK RIDGE, FLA.  
N2815—W8152.5/7.5

1960  
PHOTOREVISED 1980  
DMA 4640 IV SW—SERIES V847