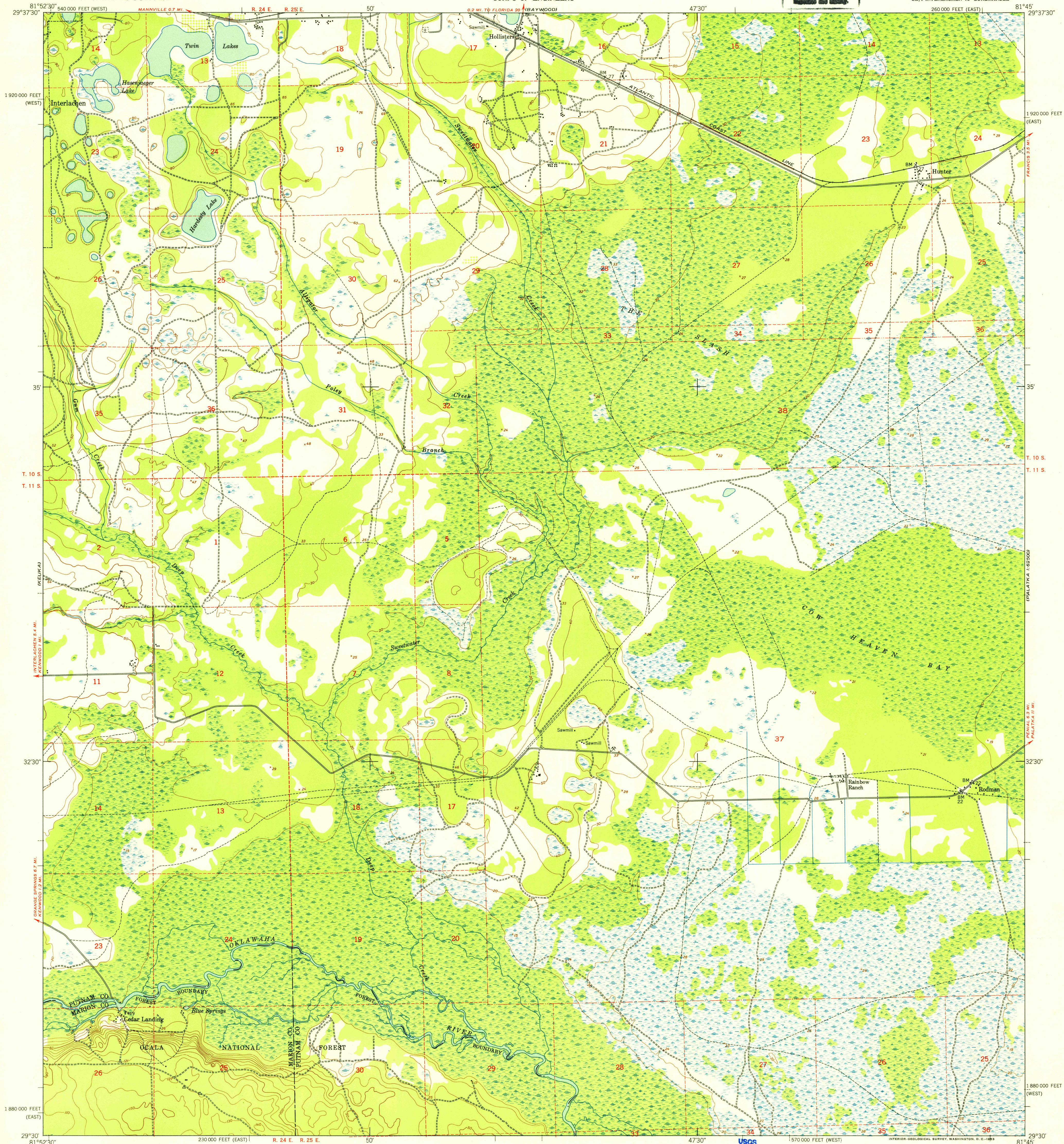


UNITED STATES
DEPARTMENT OF THE INTERIOR
GEOLOGICAL SURVEY

UNITED STATES
DEPARTMENT OF THE ARMY
CORPS OF ENGINEERS

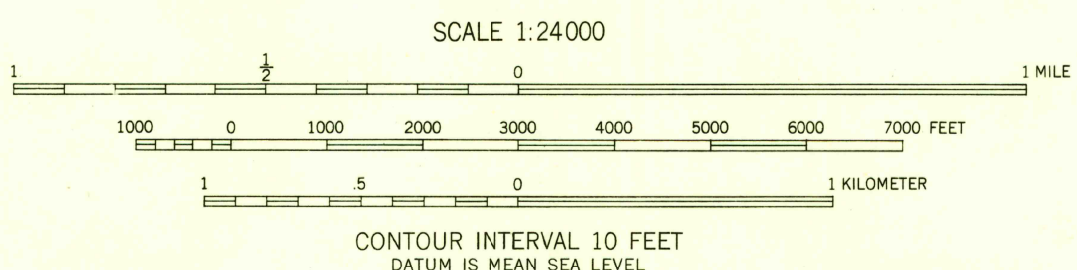
U.S.G.S.
FILE COPY
Inspection and Editing

RODMAN QUADRANGLE
FLORIDA
7.5 MINUTE SERIES (TOPOGRAPHIC)
SE 1/4 INTERLACHEN 15' QUADRANGLE



Maped by the Army Map Service
Published for civil use by the Geological Survey
Control by USC&GS, USCE, and Florida Geodetic Survey
Topography from aerial photographs by multiplex methods
Aerial photographs taken 1946-1947. Field check 1949
Polyconic projection. 1927 North American datum
10,000-foot grids based on Florida coordinate system,
east and west zones
No distinction is made between barns, dwellings,
commercial and industrial buildings
Dashed land lines indicate approximate locations
Unchecked elevations are shown in brown

TRUE NORTH
MAGNETIC NORTH
APPROXIMATE MEAN
DECLINATION, 1949



USGS
Historical File
Topographic Division



ROAD CLASSIFICATION
Heavy-duty 4 LANE 16 LANE Light-duty
Medium-duty 4 LANE 16 LANE Unimproved dirt
U.S. Route State Route

U.S.G.S.
FILE COPY
Inspection and Editing

RODMAN, FLA.
SE 1/4 INTERLACHEN 15' QUADRANGLE
N 2930-W 8145/7.5
1949

THIS MAP COMPLIES WITH NATIONAL MAP ACCURACY STANDARDS
FOR SALE BY U.S. GEOLOGICAL SURVEY, WASHINGTON 25, D. C.
A FOLDER DESCRIBING TOPOGRAPHIC MAPS AND SYMBOLS IS AVAILABLE ON REQUEST

Nov 2, 1953
2105