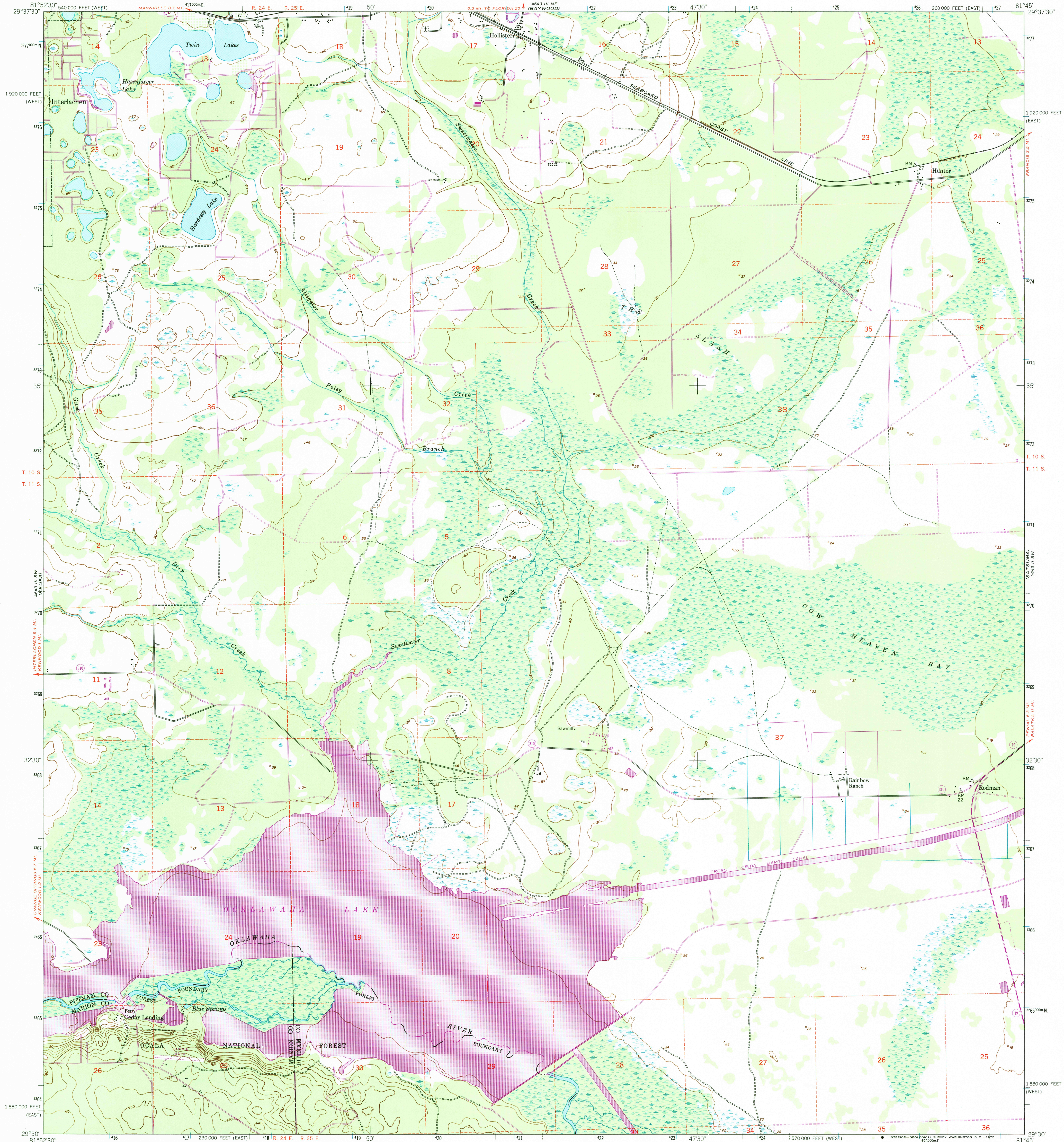


UNITED STATES  
DEPARTMENT OF THE INTERIOR  
GEOLOGICAL SURVEY

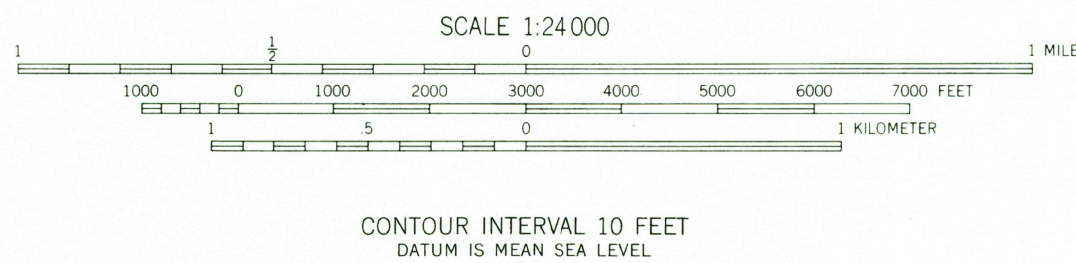
UNITED STATES  
DEPARTMENT OF THE ARMY  
CORPS OF ENGINEERS

RODMAN QUADRANGLE  
FLORIDA  
7.5 MINUTE SERIES (TOPOGRAPHIC)  
SE/4 INTERLACHEN 15' QUADRANGLE



Mapped by the Army Map Service  
Published for civil use by the Geological Survey  
Control by USC&GS, USCE, and Florida Geodetic Survey  
Topography from aerial photographs by multiplex methods  
Aerial photographs taken 1946-1947. Field check 1949  
Polyconic projection. 1927 North American datum  
10,000-foot grids based on Florida coordinate system,  
east and west zones  
No distinction is made between barns, dwellings,  
commercial and industrial buildings  
1000-meter Universal Transverse Mercator grid ticks,  
zone 17, shown in blue  
Dashed land lines indicate approximate locations  
Unchecked elevations are shown in brown

Revisions shown in purple compiled by the Geological Survey from  
aerial photographs taken 1970. This information not field checked



SCALE 1:24,000  
CONTOUR INTERVAL 10 FEET  
DATUM IS MEAN SEA LEVEL

THIS MAP COMPLIES WITH NATIONAL MAP ACCURACY STANDARDS  
FOR SALE BY U.S. GEOLOGICAL SURVEY  
DENVER, COLORADO 80225, OR RESTON, VIRGINIA 22092  
A FOLDER DESCRIBING TOPOGRAPHIC MAPS AND SYMBOLS IS AVAILABLE ON REQUEST



ROAD CLASSIFICATION

Heavy-duty	4 LANE 16 LANE	Light-duty
Medium-duty	4 LANE 16 LANE	Unimproved dirt
U. S. Route		State Route

USGS NMD HISTORICAL MAP  
OCT 30 1989  
REC'D FILE COPY

RODMAN, FLA.  
SE/4 INTERLACHEN 15' QUADRANGLE  
N2930-W8145/7.5  
1949  
PHOTOREVISED 1970  
AMS 4643 III SE-SERIES V847