

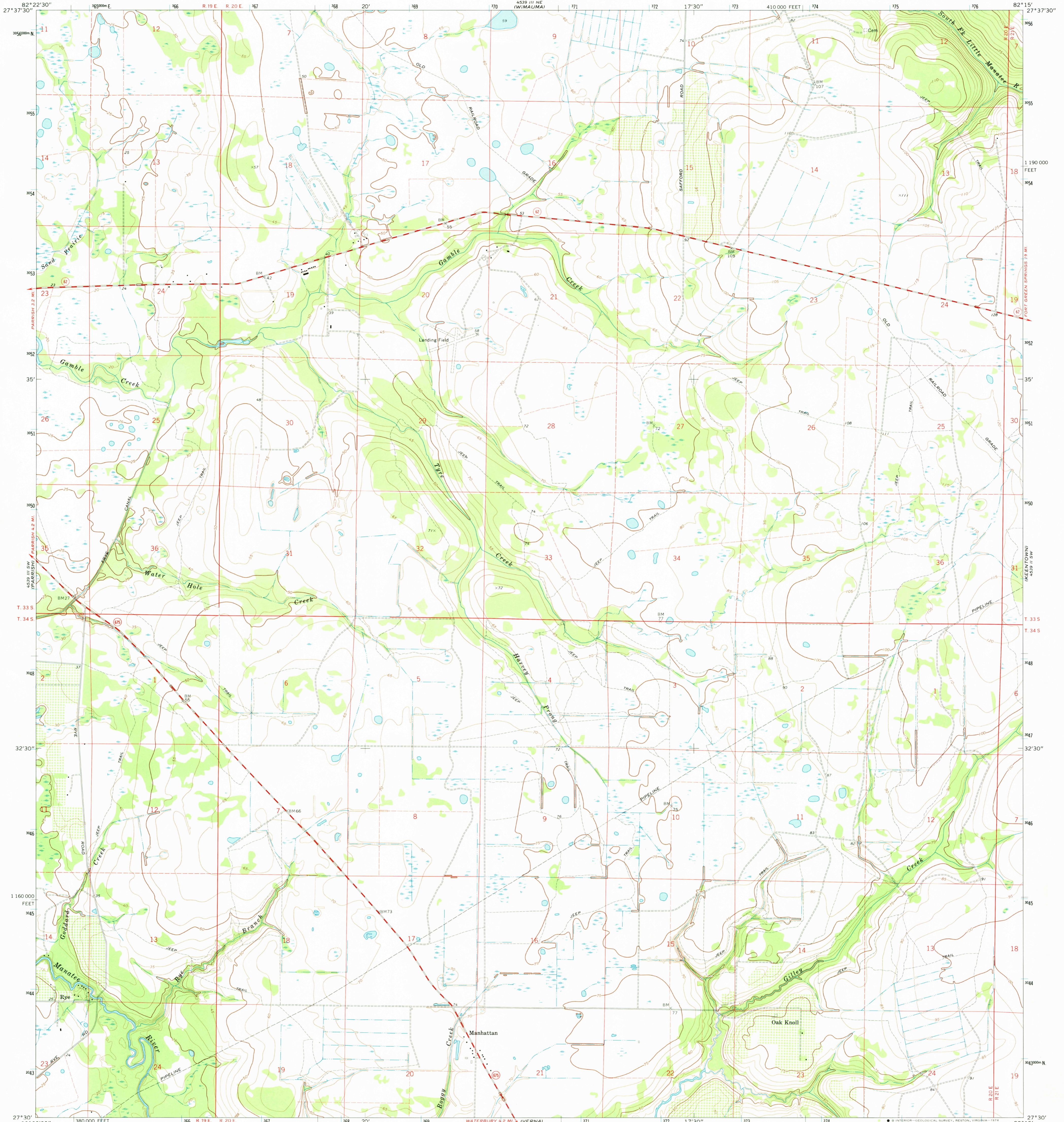
4539 III NE (W/MAUMA)

UNITED STATES
DEPARTMENT OF THE INTERIOR
GEOLOGICAL SURVEY

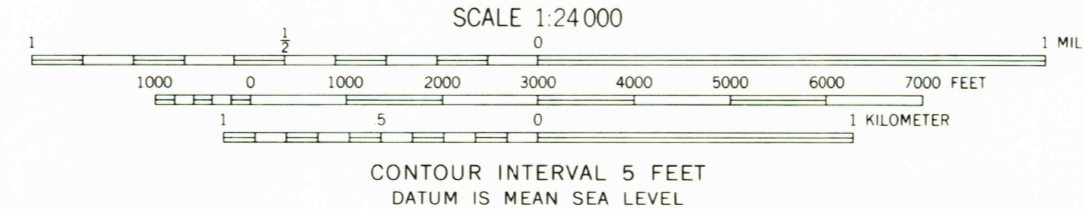
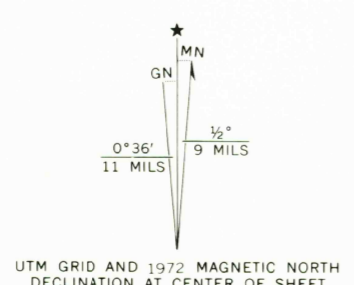
STATE OF FLORIDA

RYE QUADRANGLE
FLORIDA-MANATEE CO.
7.5 MINUTE SERIES (TOPOGRAPHIC)

4539 III NW (FORT LONESOME)



Mapped, edited, and published by the Geological Survey
Control by USGS and USC&GS
Topography by photogrammetric methods from aerial photographs
taken December 1971. Field checked 1972
Supersedes Army Map Service map dated 1944
Projection and 10,000-foot grid ticks: Florida coordinate system,
west zone (transverse Mercator)
1000-meter Universal Transverse Mercator grid ticks, zone 17,
shown in blue. 1927 North American datum
Fine red dashed lines indicate selected fence and field lines where
generally visible on aerial photographs. This information is unchecked



CONTOUR INTERVAL 5 FEET
DATUM IS MEAN SEA LEVEL



ROAD CLASSIFICATION

Primary highway, hard surface	Light-duty road, hard or improved surface
Secondary highway, hard surface	Unimproved road
Interstate Route	U. S. Route
	State Route

THIS MAP COMPLIES WITH NATIONAL MAP ACCURACY STANDARDS
FOR SALE BY U. S. GEOLOGICAL SURVEY, RESTON, VIRGINIA 22092
A FOLDER DESCRIBING TOPOGRAPHIC MAPS AND SYMBOLS IS AVAILABLE ON REQUEST

USGS
HISTORICAL FILE
TOPOGRAPHIC DIVISION

SEP 04 1974
RYE, FLA.
N2730-W8215/7.5
1972

AMS 4539 III SE-SERIES V847

MANATEE CITY NW
2650
50 pmi