

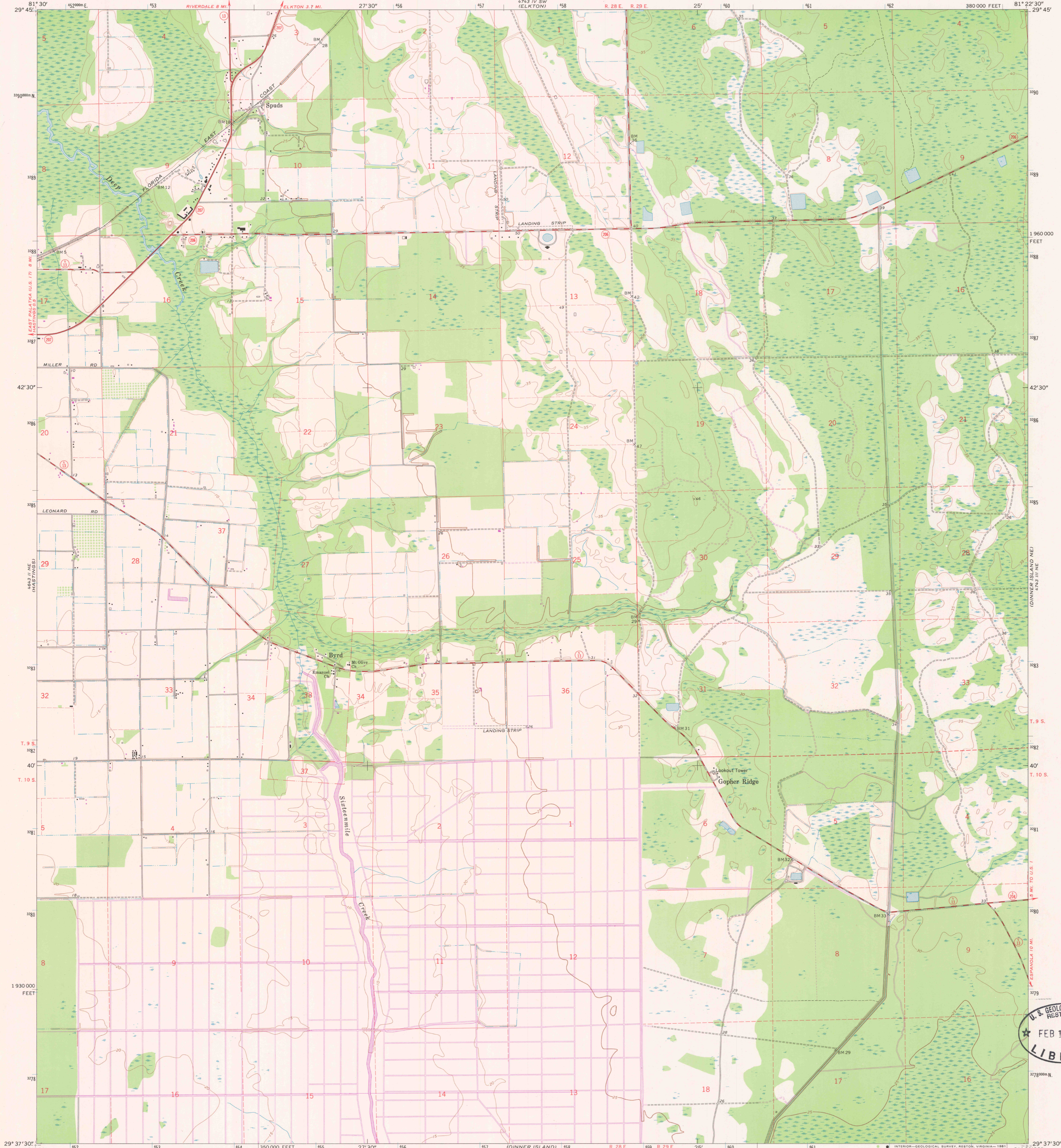
4643 1/2 SE
(RIVERDALE)

UNITED STATES
DEPARTMENT OF THE INTERIOR
GEOLOGICAL SURVEY

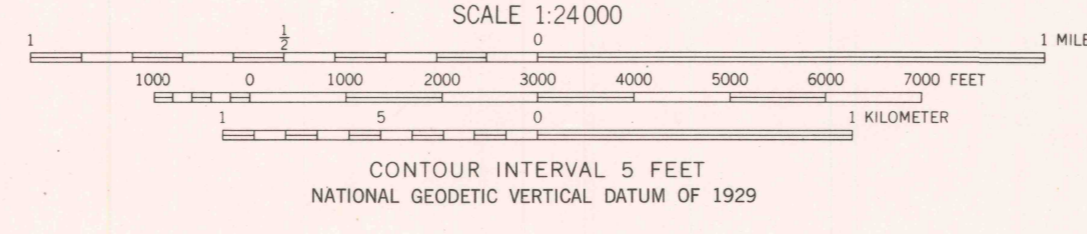
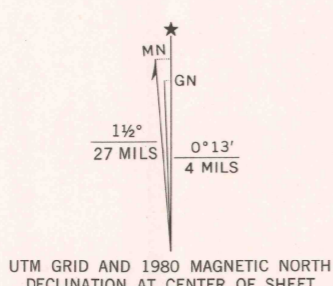
STATE OF FLORIDA

SPUDS QUADRANGLE
FLORIDA—ST. JOHNS CO.
7.5 MINUTE SERIES (TOPOGRAPHIC)

4743 1/4 SE
(ST. AUGUSTINE
BEACH)

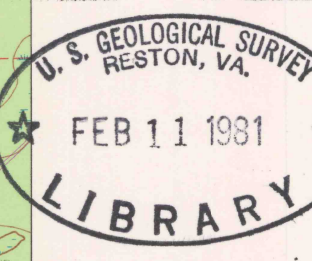


Mapped, edited, and published by the Geological Survey
Control by USGS and USC&GS
Topography by photogrammetric methods from aerial photographs
taken November 1969. Field checked 1970
Polyconic projection
10,000-foot grid based on Florida coordinate system, east zone
1000-meter Universal Transverse Mercator grid ticks, zone 17,
shown in blue 1927 North American Datum
To place on the predicted North American Datum 1983
move the projection lines 24 meters south and
18 meters west as shown by dashed corner ticks
Fine red dashed lines indicate selected fence and field lines where
generally visible on aerial photographs. This information is unchecked
Revisions shown in purple compiled from aerial photographs
taken 1977 and other source data. This information not
field checked. Map edited 1980



ROAD CLASSIFICATION

Primary highway, hard surface	Light-duty road, hard or improved surface
Secondary highway, hard surface	Unimproved road
○ Interstate Route	□ U.S. Route
	○ State Route



SPUDS, FLA.
N2937.5-W8122.5/7.5
1970
PHOTOREVISED 1980
DMA 4743 1/4 NW—SERIES W847

THIS MAP COMPLIES WITH NATIONAL MAP ACCURACY STANDARDS
FOR SALE BY U.S. GEOLOGICAL SURVEY, RESTON, VIRGINIA 22092
A FOLDER DESCRIBING TOPOGRAPHIC MAPS AND SYMBOLS IS AVAILABLE ON REQUEST