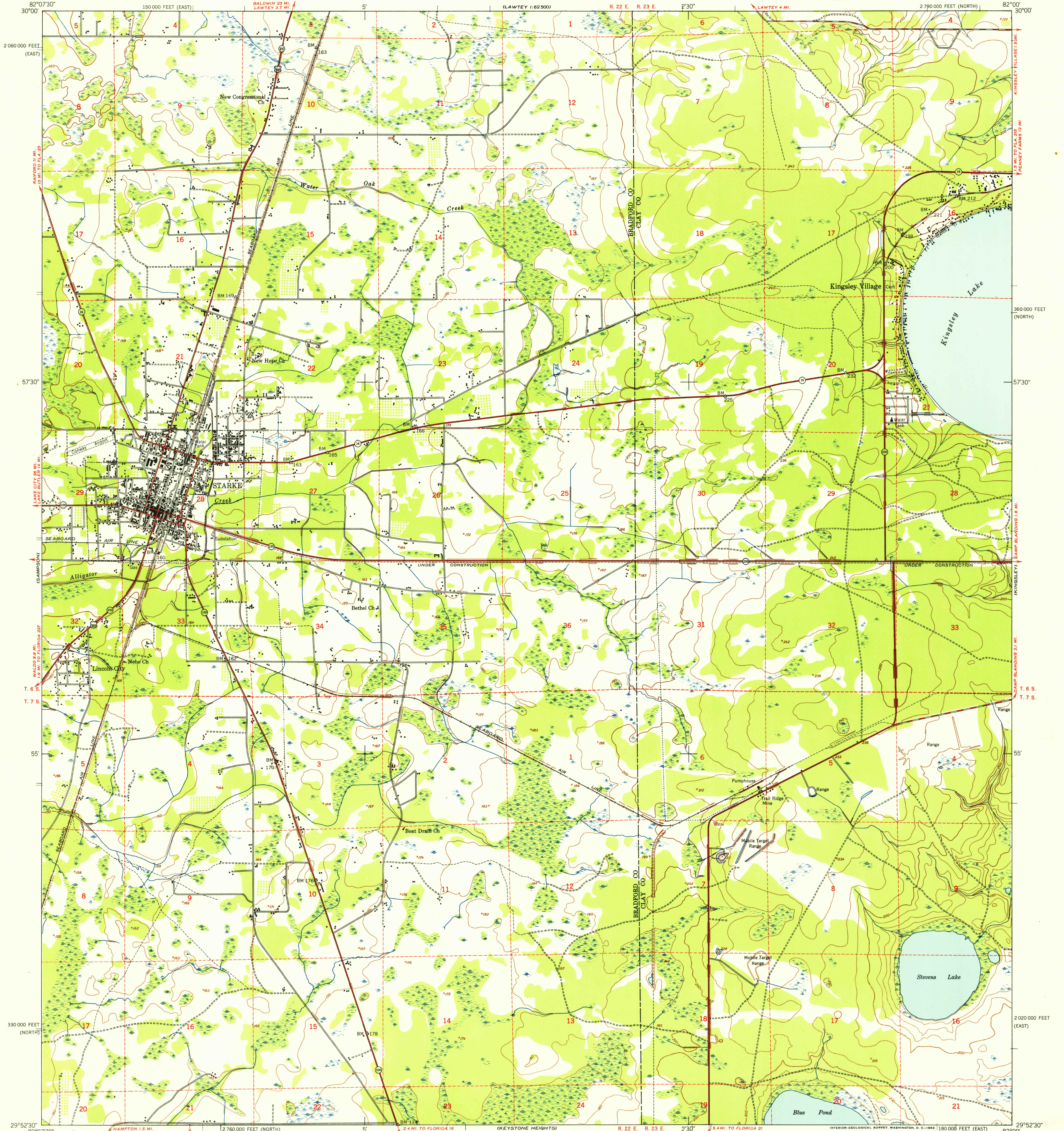


UNITED STATES  
DEPARTMENT OF THE INTERIOR  
GEOLOGICAL SURVEY

UNITED STATES  
DEPARTMENT OF THE ARMY  
CORPS OF ENGINEERS

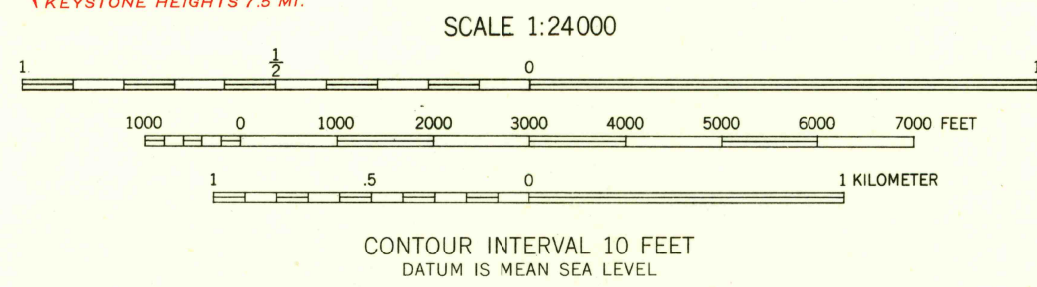
U.S.G.S.  
**FILE COPY**  
Inspection and Editing

STARKE QUADRANGLE  
FLORIDA  
7.5 MINUTE SERIES (TOPOGRAPHIC)  
NE/4 STARKE 15' QUADRANGLE  
N2952.5-W8200/7.5



Mapped by the Army Map Service  
Published for civil use by the Geological Survey  
Control by USCGS, USCE, and Florida Geodetic Survey  
Topography from aerial photographs by multiplex methods  
Aerial photographs taken 1946-1947. Field check 1949  
Polyconic projection. 1927 North American datum  
10,000-foot grids based on Florida coordinate system,  
north and east zones  
No distinction is made between barns, dwellings,  
commercial and industrial buildings  
Boundary for Camp Blanding is omitted because  
of insufficient data  
Dashed land lines indicate approximate locations  
Unchecked elevations are shown in brown

TRUE NORTH  
MAGNETIC NORTH  
APPROXIMATE MEAN  
DECLINATION, 1949



THIS MAP COMPLIES WITH NATIONAL MAP ACCURACY STANDARDS  
FOR SALE BY U.S. GEOLOGICAL SURVEY, WASHINGTON 25, D. C.  
A FOLDER DESCRIBING TOPOGRAPHIC MAPS AND SYMBOLS IS AVAILABLE ON REQUEST

ROAD CLASSIFICATION  
Heavy-duty ——— 4 LANE 6 LANE Light-duty ———  
Medium-duty ——— 4 LANE 6 LANE Unimproved dirt ———  
U.S. Route ——— State Route ———

USGS  
Historical File  
Topographic Division  
**FILE COPY**  
Inspection and Editing

STARKE, FLA.  
NE/4 STARKE 15' QUADRANGLE  
N2952.5-W8200/7.5

1949

NOV 25 1953

2660