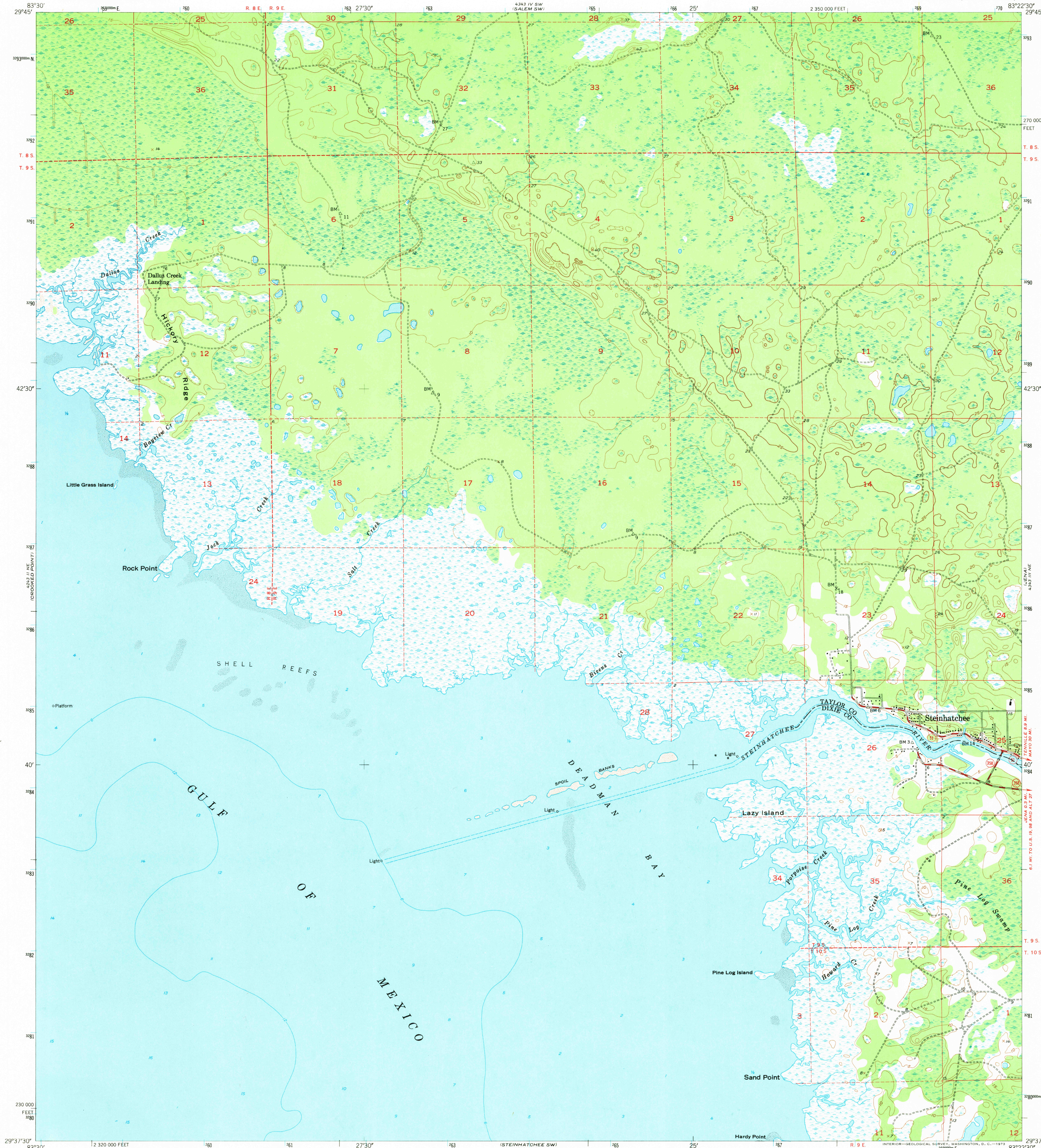


42°31' 15" N  
83°37' 30" W  
NEAR TOP LEFT CORNER

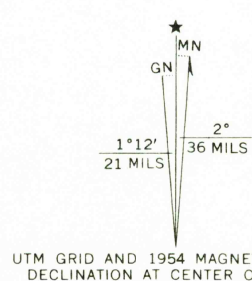
UNITED STATES  
DEPARTMENT OF THE INTERIOR  
GEOLOGICAL SURVEY

STEINHATCHEE QUADRANGLE  
FLORIDA  
7.5 MINUTE SERIES (TOPOGRAPHIC)

42°31' 15" N  
83°37' 30" W  
NEAR TOP RIGHT CORNER



Mapped, edited, and published by the Geological Survey  
Control by USGS, USC&GS, and USCE  
Culture and drainage in part compiled from aerial photographs  
taken 1951. Topography by plane-table surveys 1954  
Hydrography from USC&GS Chart 1260 (1:80 000)  
Polyconic projection. 1927 North American datum  
10,000-foot grid based on Florida coordinate system,  
north zone  
Dashed land lines indicate approximate locations  
1000-meter Universal Transverse Mercator grid ticks,  
zone 17, shown in blue



CONTOUR INTERVAL 5 FEET  
DATUM IS MEAN SEA LEVEL  
DEPTH CURVES AND SOUNDINGS IN FEET—DATUM IS MEAN LOW WATER  
SHORELINE SHOWN REPRESENTS THE APPROXIMATE LINE OF MEAN HIGH WATER  
THE MEAN RANGE OF TIDE IS APPROXIMATELY 2 FEET



ROAD CLASSIFICATION  
Heavy-duty 4 LANE 6 LANE Light-duty  
Medium-duty 4 LANE 6 LANE Unimproved dirt  
U.S. Route State Route

USGS  
Historical File  
Topographic Division

STEINHATCHEE, FLA.  
N2937.5-W8322.5/7.5  
1954  
AMS 4343 III NW—SERIES Y847

1675