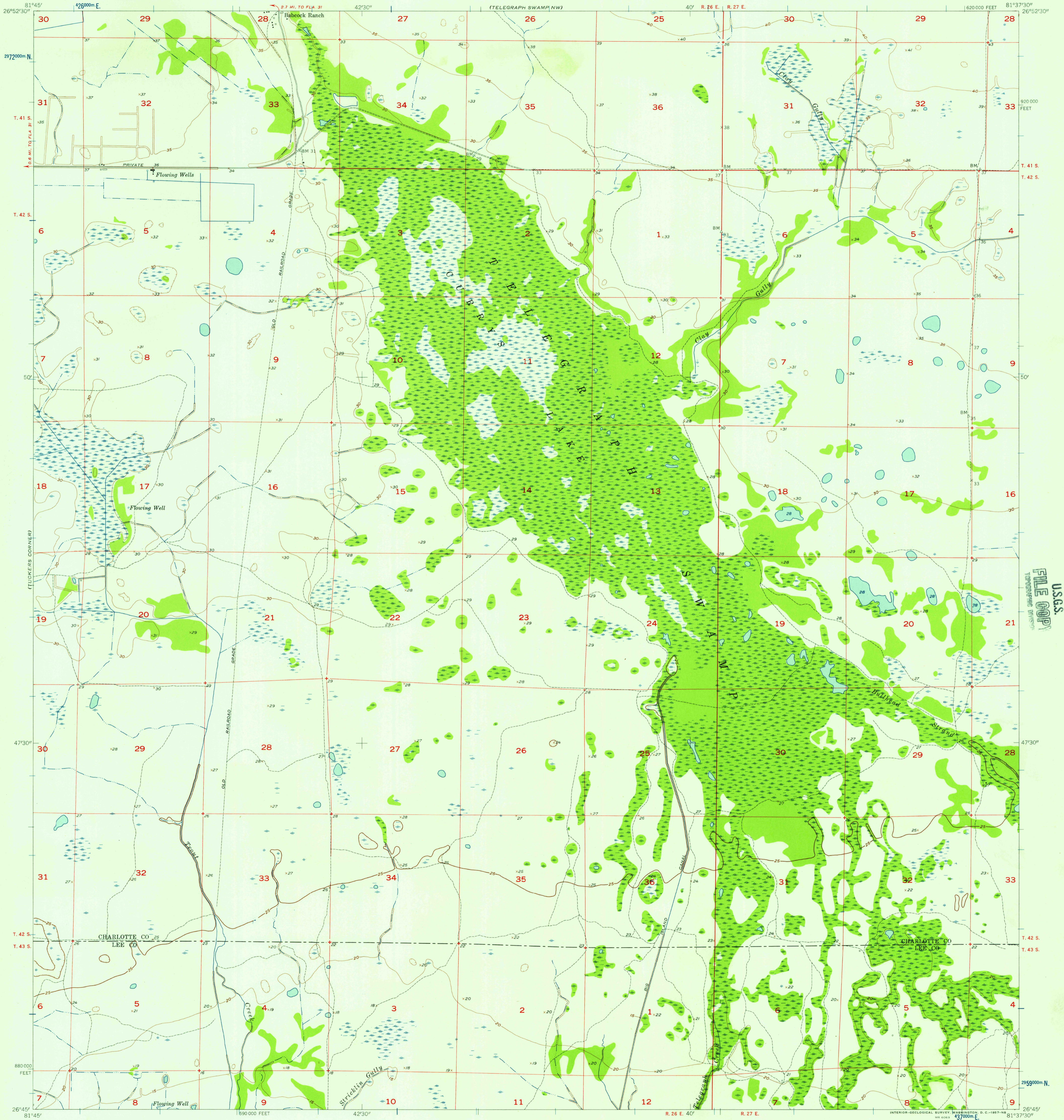


(GERMANY)

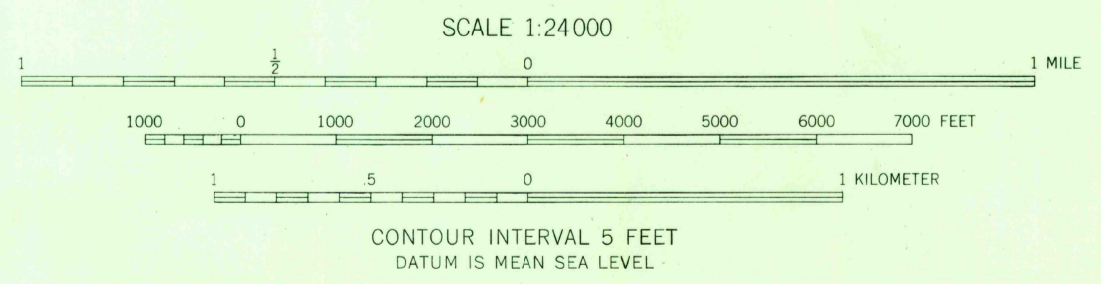
(TELEGRAPH SWAMP NE)



USGS
FILE COPY
TOPOGRAPHIC DIVISION

Mapped, edited, and published by the Geological Survey
Control by USGS and USC&GS
Culture and drainage in part compiled from aerial photographs
taken 1951-1952. Topography by planetable surveys 1955-1956
Polyconic projection. 1927 North American datum
10,000-foot grid based on Florida coordinate system, west zone
1000-meter Universal Transverse Mercator grid ticks,
zone 17, shown in blue

TRUE NORTH
MAGNETIC NORTH
APPROXIMATE MEAN
DECLINATION, 1956



USGS
Historical File
Topographic Division



ROAD CLASSIFICATION
Light-duty ————— Unimproved dirt - - - - -

U.S.G.S.
FILE COPY
TOPOGRAPHIC DIVISION

TELEGRAPH SWAMP, FLA.
N 2645-W 8137.5/7.5

1956

THIS MAP COMPLIES WITH NATIONAL MAP ACCURACY STANDARDS
FOR SALE BY U. S. GEOLOGICAL SURVEY, WASHINGTON 25, D. C.
A FOLDER DESCRIBING TOPOGRAPHIC MAPS AND SYMBOLS IS AVAILABLE ON REQUEST

AUG - 5 1957