

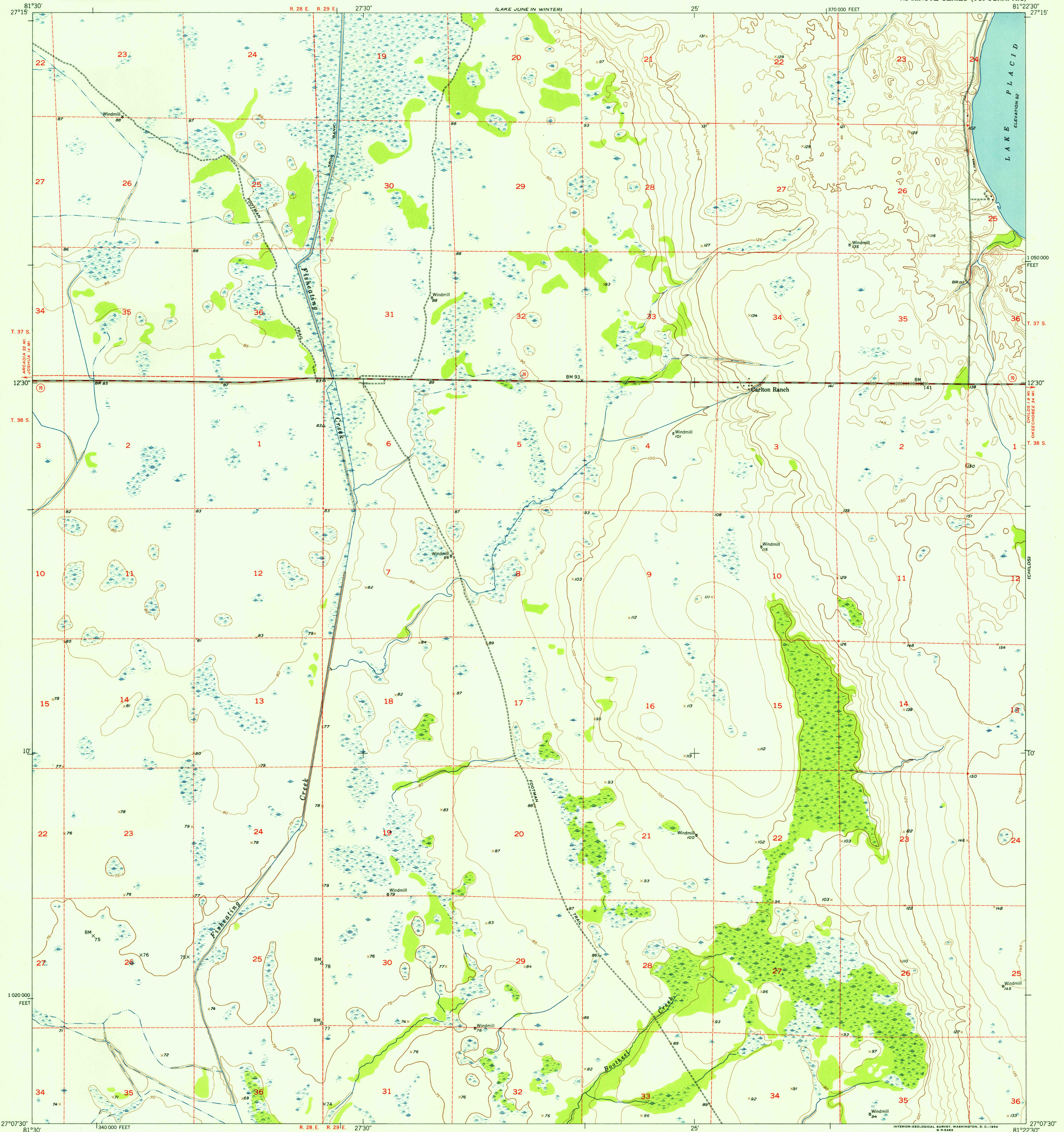
CORRECTION SHEET

UNITED STATES
DEPARTMENT OF THE INTERIOR
GEOLOGICAL SURVEY

U.S.G.S.
FILE COPY
TOPOGRAPHIC DIVISION

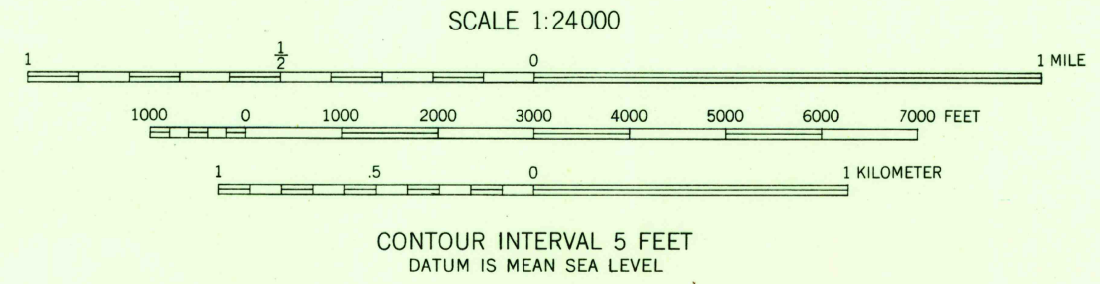
VENUS NW QUADRANGLE
FLORIDA—HIGHLANDS CO.
7.5 MINUTE SERIES (TOPOGRAPHIC)

(LAKE PLACID)



Mapped, edited, and published by the Geological Survey
Control by USGS, USC&GS, and USCE
Culture and drainage in part compiled by U. S. Corps of
Engineers from aerial photographs taken 1950. Topography
by plane-table surveys 1953
Polyconic projection. 1927 North American datum
10,000-foot grid based on Florida coordinate system,
east zone
Dashed land lines indicate approximate locations

TRUE NORTH
MAGNETIC NORTH
APPROXIMATE MEAN
DECLINATION, 1953



ROAD CLASSIFICATION
Heavy-duty ——— 4 LANE 6 LANE Light-duty ———
Medium-duty ——— 4 LANE 6 LANE Unimproved dirt ———
U. S. Route (square symbol) State Route (circle symbol)



THIS MAP COMPLIES WITH NATIONAL MAP ACCURACY STANDARDS
FOR SALE BY U. S. GEOLOGICAL SURVEY, WASHINGTON 25, D. C.
A FOLDER DESCRIBING TOPOGRAPHIC MAPS AND SYMBOLS IS AVAILABLE ON REQUEST

U.S.G.S.
FILE COPY
TOPOGRAPHIC DIVISION
VENUS NW, FLA.
N2707.5—W8122.5/7.5
1953

FEB 4 1955