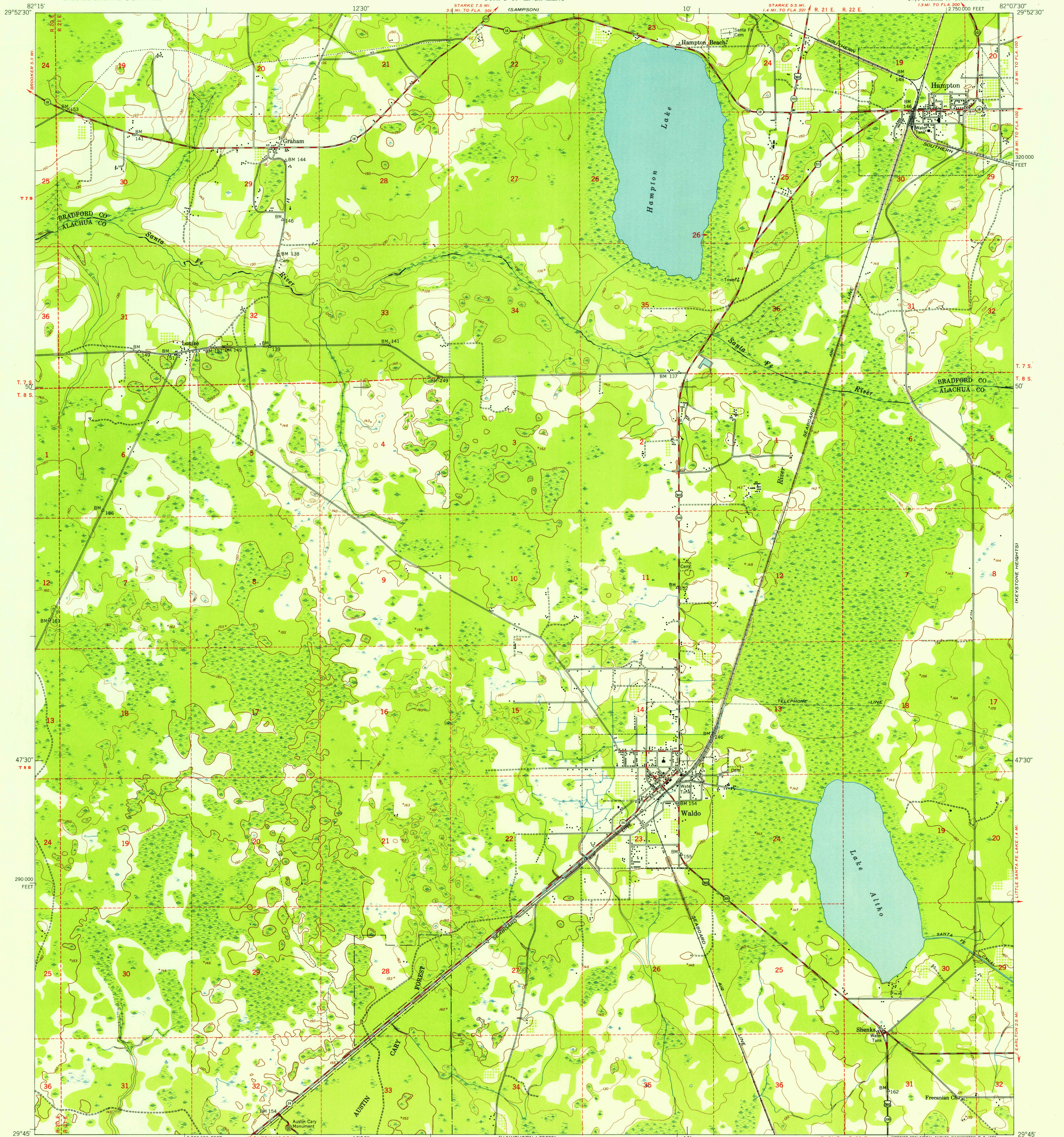
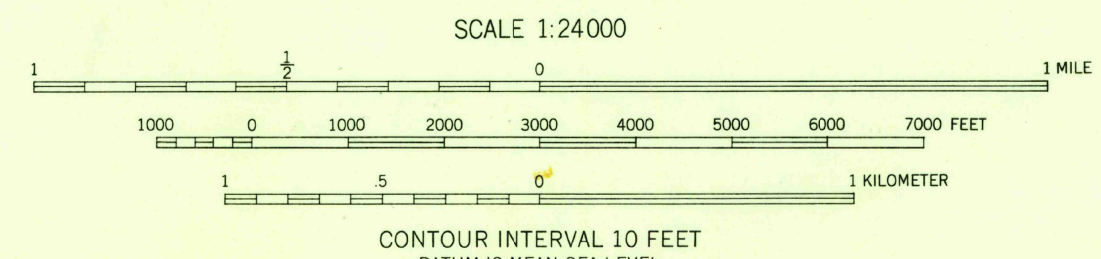


U.S.G.S.
FILE COPY
Imposition and Filing



Mapped by the Army Map Service
Published for civil use by the Geological Survey
Control by USC&GS, USCE, and Florida Geodetic Survey
Topography from aerial photographs by multiplex methods
Aerial photographs taken 1946-1947. Field check 1949
Polyconic projection, 1927 North American datum
10,000-foot grid based on Florida coordinate system,
north zone
No distinction is made between barns, dwellings,
commercial and industrial buildings
Dashed land lines indicate approximate locations
Unchecked elevations are shown in brown

TRUE NORTH
MAGNETIC NORTH
APPROXIMATE MEAN
DECLINATION, 1949



ROAD CLASSIFICATION
Heavy-duty ——— 4 LANE 16 LANE Light-duty ———
Medium-duty ——— 4 LANE 16 LANE Unimproved dirt - - - - -
U. S. Route State Route



USGS
Historical File
Topographic Division

U.S.G.S.
FILE COPY
Imposition and Filing

WALDO, FLA.
SW/4 STARKE 15' QUADRANGLE
N2945-W8207.5/7.5
1949