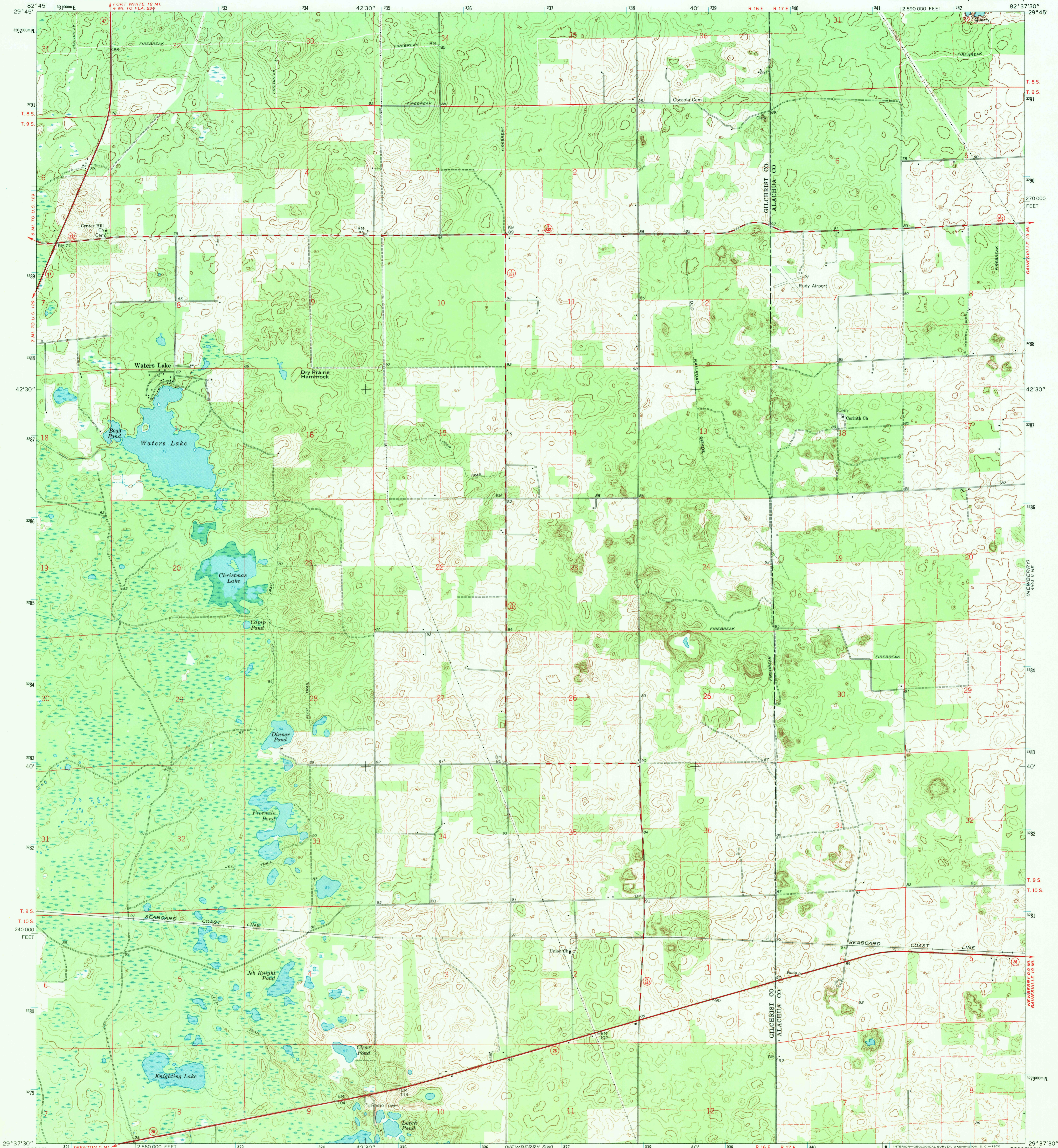
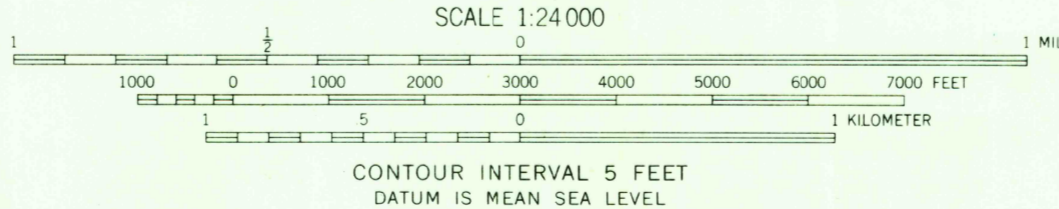
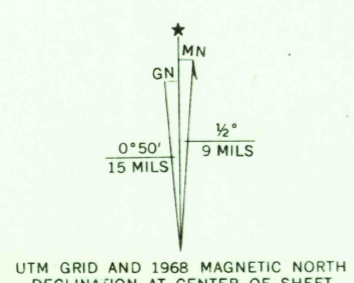


4443 SE  
HIGH SPRINGS



Mapped, edited, and published by the Geological Survey in cooperation with State of Florida agencies Control by USGS, USCGS, and Florida Geodetic Survey Topography by photogrammetric methods from aerial photographs taken 1965. Field checked 1968  
Polyconic projection. 1927 North American datum 10,000-foot grid based on Florida coordinate system, north zone 1000-meter Universal Transverse Mercator grid ticks, zone 17, shown in blue  
Fine red dashed lines indicate selected fence and field lines where generally visible on aerial photographs. This information is unchecked



CONTOUR INTERVAL 5 FEET  
DATUM IS MEAN SEA LEVEL

USGS  
Historical File  
Topographic Division

ROAD CLASSIFICATION

Primary highway, all weather, hard surface	Light duty road, all weather, improved surface
Secondary highway, all weather, hard surface	Unimproved road, fair or dry weather
	State Route



U.S.G.S.  
FILE COPY  
TOPOGRAPHIC DIVISION

WATERS LAKE, FLA.  
N2937.5—W8237.5/7.5  
1968

2715  
MAR 11 1970

THIS MAP COMPLIES WITH NATIONAL MAP ACCURACY STANDARDS  
FOR SALE BY U. S. GEOLOGICAL SURVEY, WASHINGTON, D. C. 20242  
A FOLDER DESCRIBING TOPOGRAPHIC MAPS AND SYMBOLS IS AVAILABLE ON REQUEST

AMS 4443 11 NW—SERIES V847