

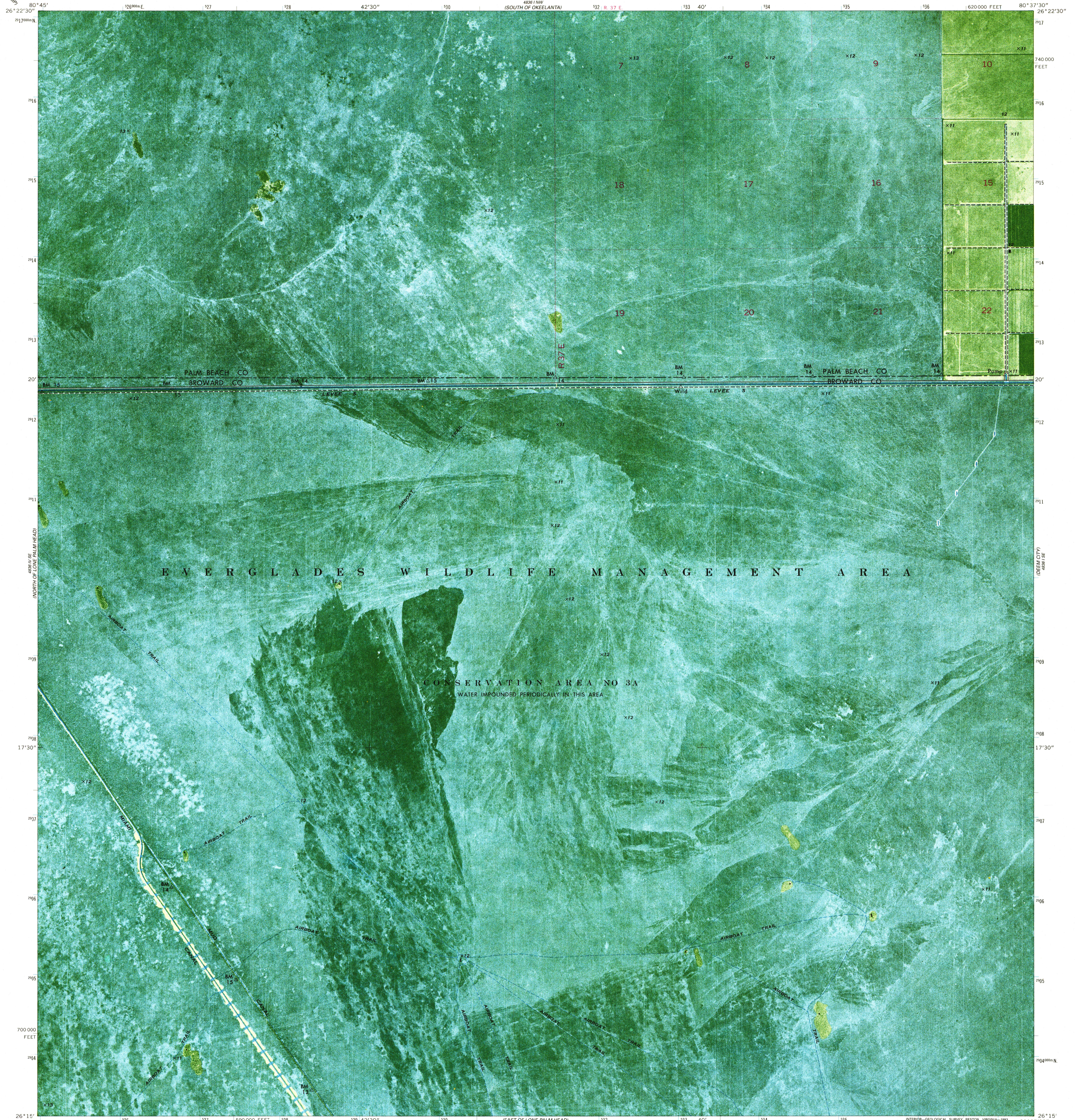
4881 N/SE  
EAST OF  
TILE CYPRESS SWAMP

4881 N/NE  
NORTH OF DEEM CITY

UNITED STATES  
DEPARTMENT OF THE INTERIOR  
GEOLOGICAL SURVEY

STATE OF FLORIDA

WEST OF DEEM CITY QUADRANGLE  
FLORIDA  
7.5 MINUTE SERIES ORTHOPHOTOMAP (TOPOGRAPHIC)



EVERGLADES WILDLIFE MANAGEMENT AREA

CONSERVATION AREA NO 3A  
WATER IMPOUNDED PERIODICALLY IN THIS AREA

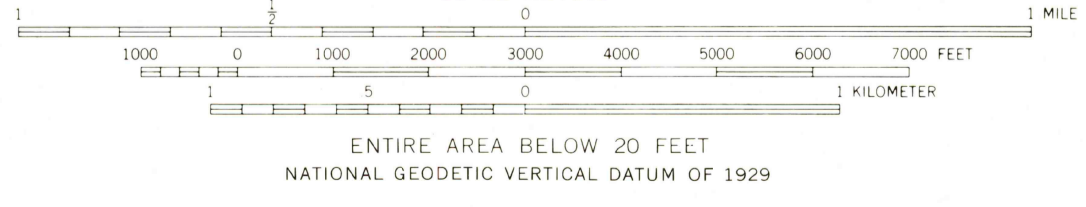
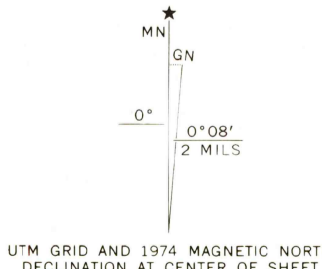
Mapped, edited, and published by the Geological Survey

Control by USGS, USC&GS, and USCE

Orthophotomap prepared from aerial photograph taken February 10, 1971. Field checked 1974

Projection and 10,000-foot grid ticks: Florida coordinate system, east zone (transverse Mercator)  
1000-meter Universal Transverse Mercator grid ticks, zone 17, shown in blue. 1927 North American datum

Dotted land lines established by private survey  
Where omitted, land lines have not been established or are not shown because of insufficient data



ROAD CLASSIFICATION

|                                 |   |
|---------------------------------|---|
| Primary highway, hard surface   | Light-duty road, hard or improved surface |
| Secondary highway, hard surface | Unimproved road                           |
| Trails                          |   |
| Interstate Route                | U. S. Route                               |
|                                 | State Route                               |

THIS MAP COMPLIES WITH NATIONAL MAP ACCURACY STANDARDS FOR SALE BY U.S. GEOLOGICAL SURVEY, RESTON, VIRGINIA 22092. A FOLDER DESCRIBING TOPOGRAPHIC MAPS AND SYMBOLS IS AVAILABLE ON REQUEST

USGS 1989 HISTORICAL MAP ARCHIVES  
FEB 28 1994  
REC'D FILE COPY

WEST OF DEEM CITY, FLA.  
(FORMERLY EVERGLADES 1 SW)  
26080-C6-0M-024  
1974  
DMA 4836 1 SW - SERIES V8470

4881 W/SE  
NORTH OF LONE PALM HEAD

4881 W/NE  
SOUTH OF DEEM CITY