

UNITED STATES  
DEPARTMENT OF THE INTERIOR  
GEOLOGICAL SURVEY

WAR DEPARTMENT  
CORPS OF ENGINEERS, U. S. ARMY

FLORIDA  
(GULF COUNTY)  
WETAPPO CREEK QUADRANGLE  
7½-MINUTE SERIES

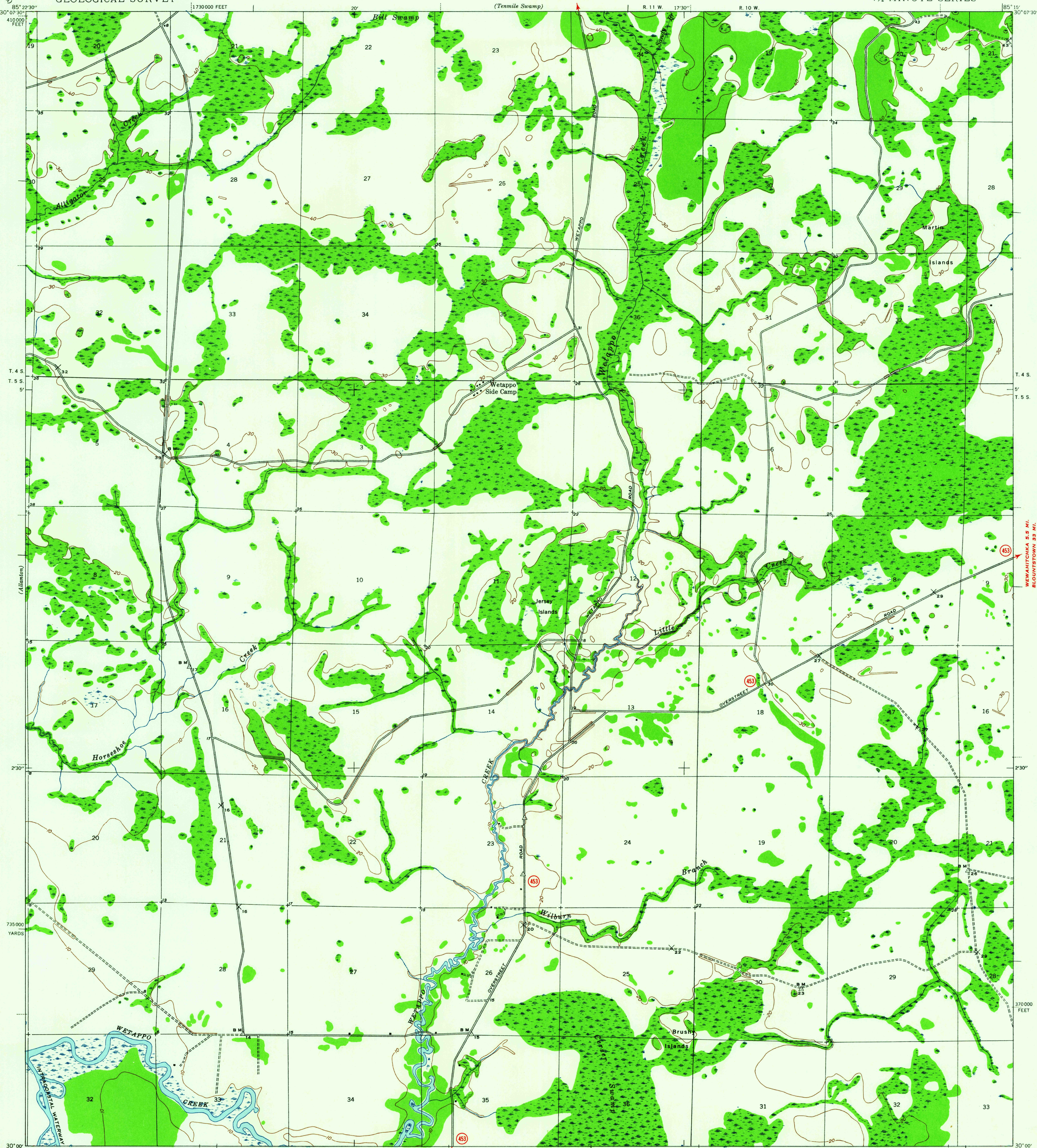
JUNC. STATE NO. 52 1.4 MI.

(Tennile Swamp)

R. 11 W. 17°30'

R. 10 W.

85°15' 30" 07' 30"



Mapped by the Geological Survey  
1943-1944

TRUE NORTH  
MAGNETIC NORTH  
APPROXIMATE MEAN  
DECLINATION, 1944

SCALE 1:24 000  
0 500 1000 1500 2000 2500 Yards  
0 1000 2000 3000 4000 5000 6000 7000 Feet  
0 1 2 3 4 5 6 7 8 9 10 Kilometers  
Contour interval 10 feet  
Datum is mean sea level

ROAD CLASSIFICATION  
1944  
Dependable hard-surface  
Heavy-duty road  
Secondary hard-surface  
all-weather road  
Dry weather roads  
Loose surface, graded  
Unsurfaced, graded  
Dirt road  
U. S. Route (15)  
State Route (26)  
More than two lanes indicated along road with tick at point of change  
3 LANE 4 LANE

WETAPPO CREEK, FLA.  
Edition of 1945  
N 3000-W 8515/7.5

USGS  
Historical File  
Topographic Division

U.S.G.S.  
FILE COPY  
TOPOGRAPHIC DIVISION

MAY 21 1960

FOR SALE BY U. S. GEOLOGICAL SURVEY, WASHINGTON 25, D. C.  
A FOLDER DESCRIBING TOPOGRAPHIC MAPS AND SYMBOLS IS AVAILABLE ON REQUEST

1958