

PENSACOLA AND VICINITY 1:25,000  
FLORIDA - ALABAMA

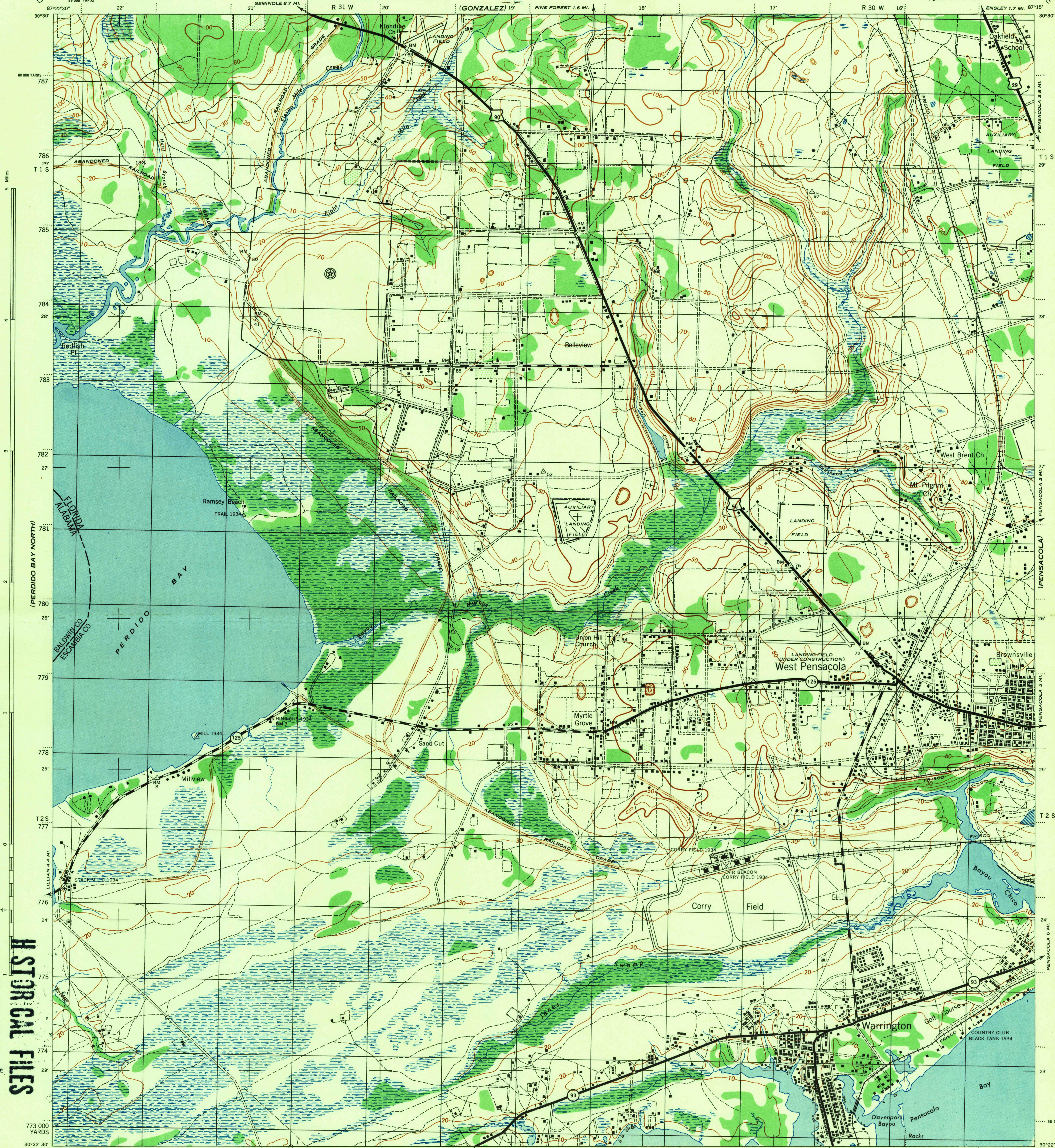
WAR DEPARTMENT  
CORPS OF ENGINEERS, U. S. ARMY

RESTRICTED

SECOND EDITION - AMS 2

WEST PENSACOLA QUADRANGLE

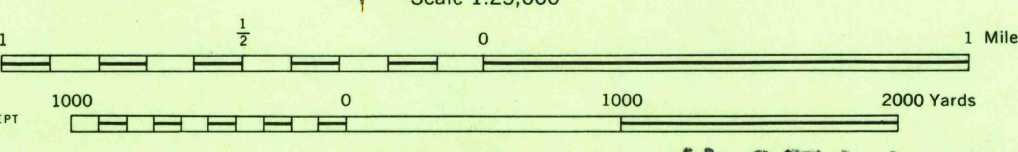
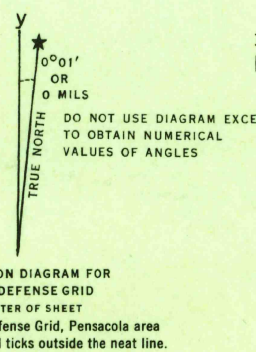
7 1/2 MINUTE SERIES



HISTORICAL FILES  
(DO NOT REMOVE)

First Edition 1926  
Second Edition (AMS-2) 1944  
Prepared under the direction of the Chief of Engineers, U.S. Army, by the  
Army Map Service (E. X.), U. S. Army, Washington, D. C., 1943  
Compiled from U.S.C. & G.S. Planimetric "T" Charts, T-5487, T-5490, T-5491, T-5492  
U.S.G.S. Fort Barrancas Quadrangle, 1942.  
Aerial Photography and Photo Indices by A.A.A., U.S.D.A., 1940-41  
Polyconic Projection, North American Datum 1927.

ROAD CLASSIFICATION 1943  
Dependable hard-surface, heavy-duty road. Loose-surface graded, heavy-duty road. U. S. Route  
Secondary, hard-surface, all-weather road. Dirt road. State Route  
More than two lanes indicated by note along road with tick at point of change. 3 LANE 4 LANE



CONTOUR INTERVAL 10 FEET  
DATUM IS MEAN SEA LEVEL

ONE THOUSAND YARD GRID COMPUTED FROM "GRID SYSTEM FOR PENSACOLA AREA" IN THE U.S., ZONE C, U. S. C. & G. S. SPECIAL PUBLICATION NO. 59. THE LAST THREE DIGITS OF THE GRID NUMBERS ARE OMITTED.

HISTORICAL FILES  
(DO NOT REMOVE)

APPROXIMATE MEAN DECLINATION 1944 FOR CENTER OF SHEET  
ANNUAL MAGNETIC CHANGE 2" INCREASE  
Use diagram only to obtain numerical values. To determine magnetic north line, connect the point "M" on the south edge of the map with the value of the angle between GRID NORTH and MAGNETIC NORTH, as plotted on the degree scale of the north edge of the map.

6/44 SX  
RESTRICTED  
This document contains information affecting the national defense of the United States within the meaning of the Espionage Act, 50 U. S. C., 31 and 32, as amended. Its transmission or the revelation of its contents in any manner to an unauthorized person is prohibited by law.  
WEST PENSACOLA, FLA. - ALA.  
N3022.5-W8715.7.5

690-5-11-Wy N.E. part

FILE - COPY  
Not to be removed from files