

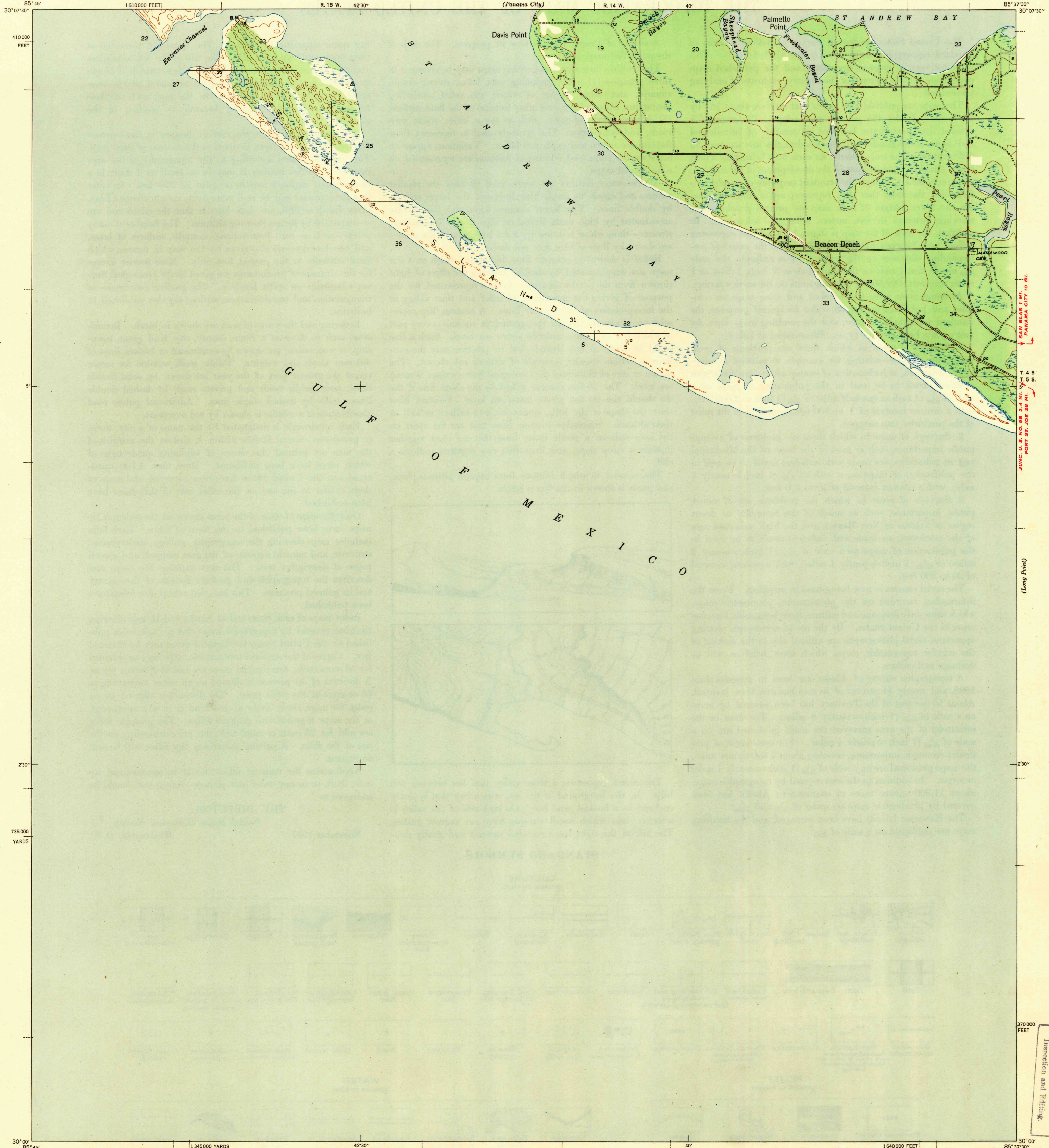
(Panama City Beach)

U. S. G. S.
FILE COPY
Inspection and Editing.

UNITED STATES
DEPARTMENT OF THE INTERIOR
GEOLOGICAL SURVEY

WAR DEPARTMENT
CORPS OF ENGINEERS, U. S. ARMY

FLORIDA
(BAY COUNTY)
BEACON BEACH QUADRANGLE
7½-MINUTE SERIES



85° 45' 30" 07' 30" 1610000 FEET R. 15 W. 42' 30" (Panama City) R. 14 W. 40' 85° 37' 30" 30" 07' 30"

410000 FEET

ENTRANCE CHANNEL

DAVIS POINT

Palmetto Point

ST ANDREW BAY

Beacon Beach

PEARL RIVER

SHOALS

GULF OF MEXICO

1640000 FEET 85° 37' 30" 30" 07' 30"

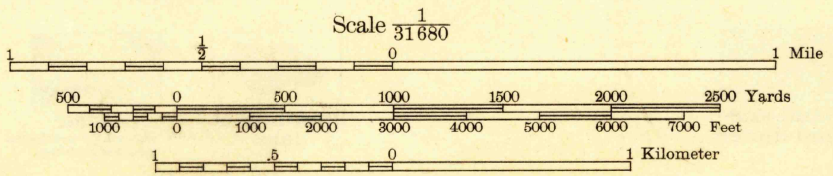
735000 YARDS

370000 FEET

30° 00' 85° 45' 1345000 YARDS 42' 30" 40' 1640000 FEET 85° 37' 30" 30" 00'

Topography by H. E. Simmons and W. S. Beames
Surveyed in 1943

4° 15'
TRUE NORTH
MAGNETIC NORTH
APPROXIMATE MEAN
DECLINATION, 1948



Contour interval 10 feet
Datum is mean sea level

USCS
Historical File
Topographic Division

ROAD CLASSIFICATION

Dependable hard-surface, heavy-duty road. U. S. Route 11
Secondary, hard-surface, all-weather road. State Route 28
Loose-surface graded, un-surfaced graded, dry weather roads.
Dirt road.
More than two lanes indicated by note along road with tick at point of change. 3 LANE, 1 & 4 LANE

Polyconic projection, 1927 North American datum
5000 yard grid based on U. S. zone system, C
10000 foot grid based on Florida (North)
rectangular coordinate system

BEACON BEACH, FLA.
Edition of 1943
N3000-W8537.5/7.5

U. S. G. S.
FILE COPY
Inspection and Editing.