

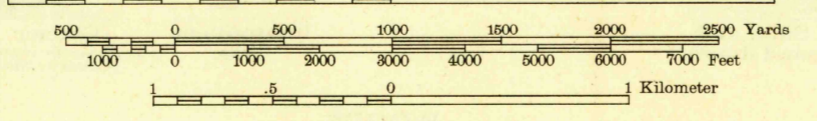
JUNC. U. S. NO. 237, 19 MI.
CLARKSVILLE 3.6 MI.

BRISTOL 8 MI.
TALLAHASSEE 45 MI.

Mapped by the Geological Survey
1943-1944

410,000 YARDS
SHARPS TOWN 0.9 MI.
PORT ST. JOE 45.6 MI.

Scale 1:31,680



Contour interval 10 feet
Datum is mean sea level

ROAD CLASSIFICATION
1945

| | | |
|-----------------------------------------|----------------------|----------------|
| Dependable hard-surface heavy-duty road | Dry weather roads | U. S. Route 15 |
| Secondary hard-surface all-weather road | Loose-surface graded | State Route 26 |
| | Unsurfaced, graded | |
| | Dirt road | |

More than two lanes indicated along road with tick at point of change

Polyconic projection. 1927 North American datum
5000 yard grid based on U. S. zone system, C
10000 foot grid based on Florida (North)
rectangular coordinate system
Information for land lines east of Apalachicola River
supplied by the State of Florida

BLOUNTSTOWN, FLA.
Edition of 1945

N3022.5-W8500/7.5

HISTORICAL FILES
(DO NOT REMOVE)

TRUE NORTH
MAGNETIC NORTH
APPROXIMATE MEAN
DECLINATION, 1944