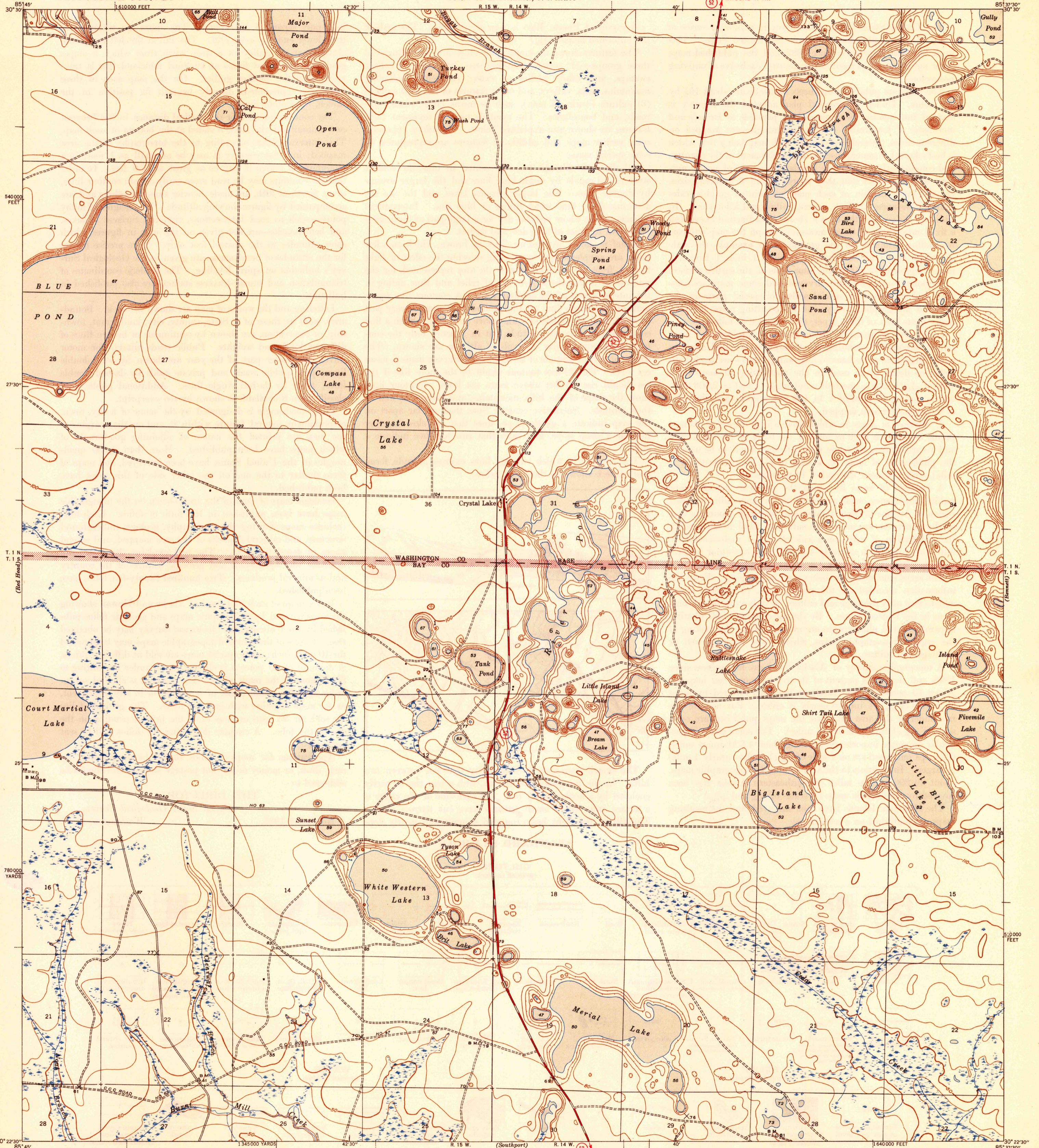


Make A-B = 19.685

UNITED STATES  
DEPARTMENT OF THE INTERIOR  
GEOLOGICAL SURVEY

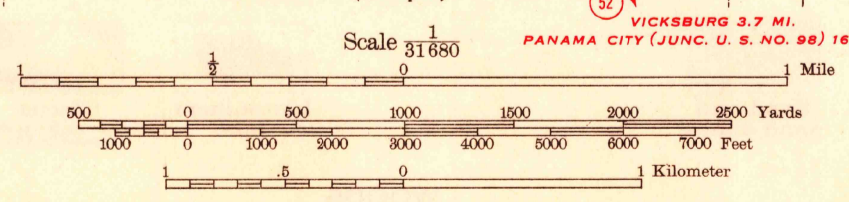
WAR DEPARTMENT  
CORPS OF ENGINEERS, U. S. ARMY

FLORIDA  
CRYSTAL LAKE QUADRANGLE  
7 1/2-MINUTE SERIES



85°14'5" W  
30°30' N  
540000 FEET  
1640000 FEET  
1345000 YARDS  
780000 YARDS  
30°22'30" N  
85°45' W

85°37'30" W  
30°30' N  
27°30' N  
T. 1 N.  
T. 1 S.  
510000 FEET  
1640000 FEET  
30°22'30" N  
85°37'30" W



ROAD CLASSIFICATION  
1945  
Dependable hard-surface heavy-duty road  
Secondary hard-surface all-weather road  
Loose-surface graded  
Unsurfaced, graded  
Dirt road  
Dry weather roads  
U. S. Route 13  
State Route 26  
More than two lanes indicated along road with tick at point of change

Polyconic projection, 1927 North American datum  
5000 yard grid based on U. S. zone system, C  
10000 foot grid based on Florida (North) rectangular coordinate system

HISTORICAL FILES  
(DO NOT REMOVE)

TRUE NORTH  
MAGNETIC NORTH  
APPROXIMATE MEAN DECLINATION, 1944

Contour interval 10 feet  
Datum is mean sea level

CRYSTAL LAKE, FLA.  
Edition of 1945

N 3022.5-W 8537.5/7.5