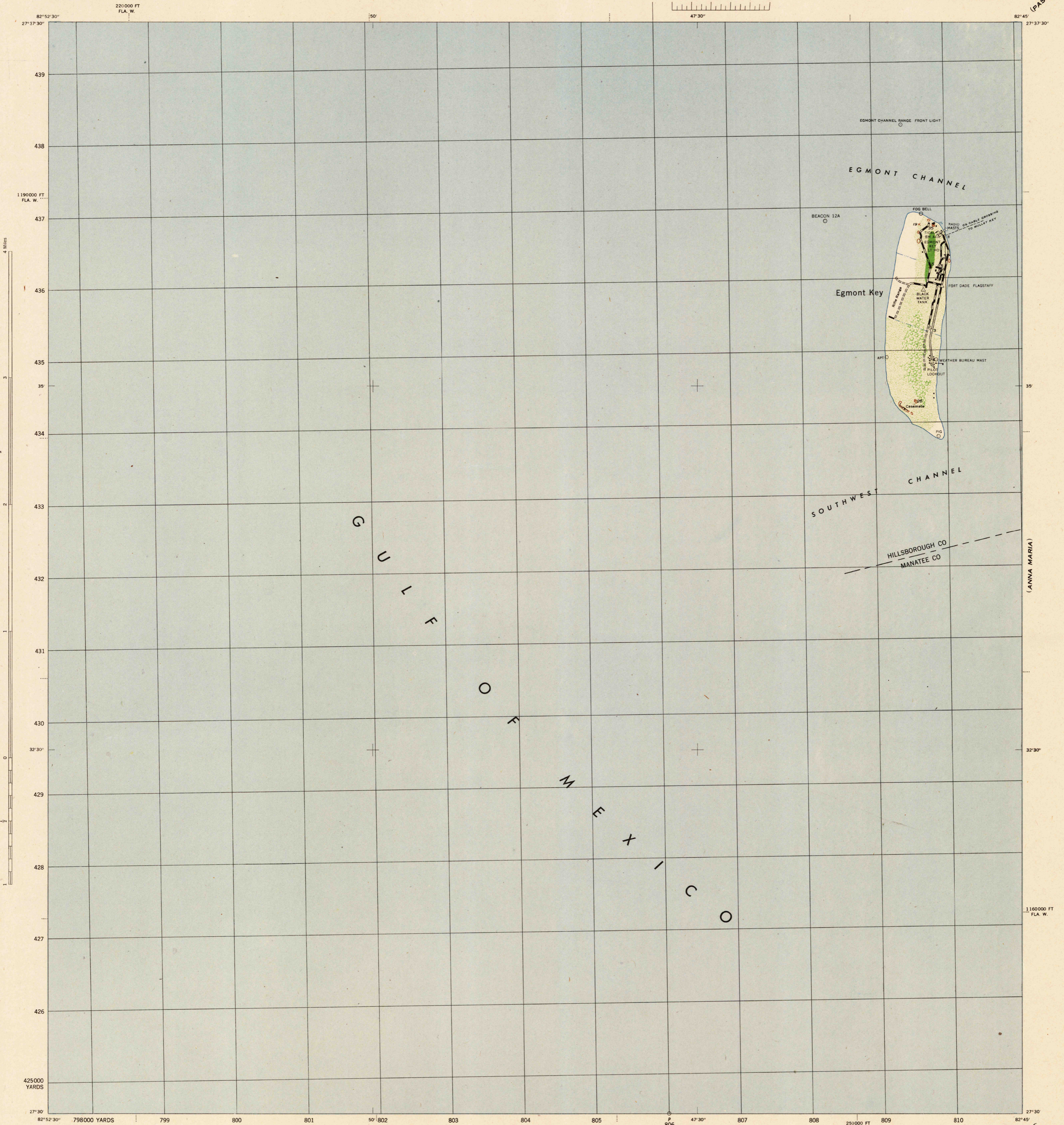


(PASS-A-GRILLE)



(ANNA MARIA)

(BRADENTON BEACH)

Mapped by the U. S. Coast and Geodetic Survey under the direction of the Chief of Engineers, U. S. Army, 1942.  
 Control by the U. S. Coast and Geodetic Survey.  
 Planimetry by the U. S. C. & G. S. from 1939 air photographs.  
 Planimetric topography and field edit by U. S. C. & G. S., 1944.  
 Polyconic projection, North American datum of 1927.  
 Recoverable horizontal control stations of less than third order accuracy are shown by circles.

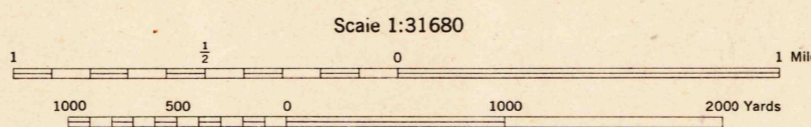
**ROAD CLASSIFICATION 1944**

Dependable hard-surface, heavy-duty road. Loose surface graded, dry-weather road. U. S. route **74**

Secondary, hard-surface, all-weather road. Dirt road. State route **26**

More than two lanes indicated by note along road with tick at point of change. **3 LANE 4 LANE**

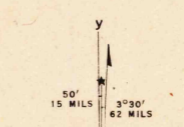
THIS MAP COMPLIES WITH THE NATIONAL STANDARD MAP ACCURACY REQUIREMENTS



CONTOUR INTERVAL 20 FEET  
 DATUM IS MEAN SEA LEVEL

ONE THOUSAND YARD GRID COMPUTED FROM "GRID SYSTEM FOR PROGRESSIVE MAPS IN THE U. S. ZONE 8, U. S. C. & G. S. SPECIAL PUBLICATION NO. 59" THE LAST THREE DIGITS OF THE GRID NUMBERS ARE OMITTED THE STATE GRIDS ARE INDICATED AT 10,000 FOOT INTERVALS

NOTE: OFFICERS USING THIS MAP WILL MAKE NECESSARY CORRECTIONS AND ADDITIONS WHICH COME TO THEIR ATTENTION AND MAIL DIRECT TO "THE CHIEF OF ENGINEERS, WASHINGTON, D. C."



REPRODUCED BY THE U. S. COAST AND GEODETIC SURVEY, AMS NO. 121928

**WOODLAND CLASSIFICATION**

Dense woodland Dense brush

Scattered brush and trees Orchard

Marsh or swamp Low ground, intermittently flooded

EGMONT KEY, FLA.  
 N2730-W8245/7.5  
 EDITION OF 1944

USCS  
 Historical File  
 U. S. Topographic Division  
 FILE COPY  
 Inspection and Editing