

(White City)
85° 07' 30"
29° 52' 30"
310 000
FEET
T. 7 S.
T. 8 S.
(Lake Wimico)
47° 30'
705 000
YARDS
29° 15'
85° 07' 30"
410 000
YARDS
(Indian Pass)

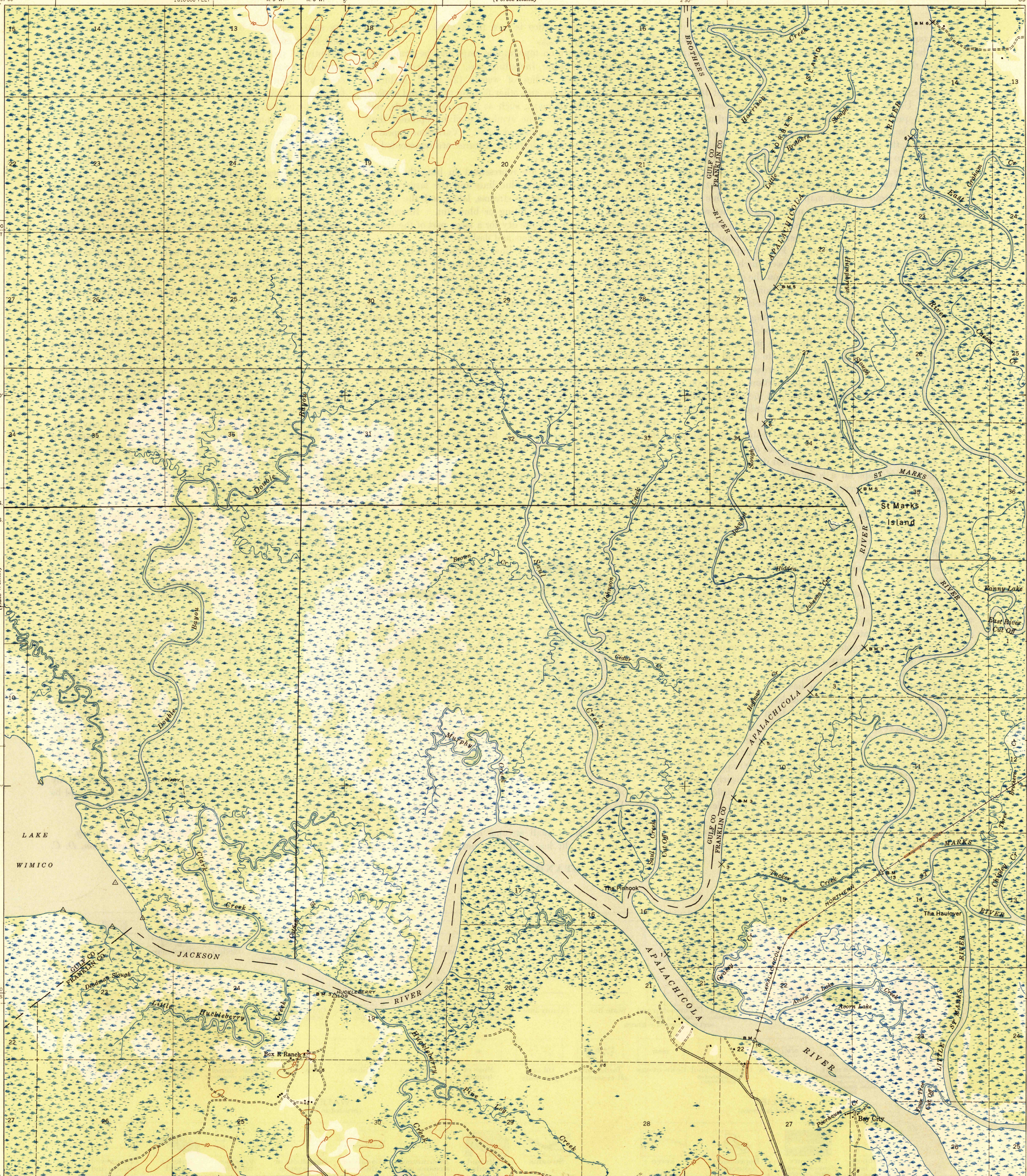
UNITED STATES
DEPARTMENT OF THE INTERIOR
GEOLOGICAL SURVEY

WAR DEPARTMENT
CORPS OF ENGINEERS, U. S. ARMY
(Forbes Island)

U. S. G. S.
FILE COPY
Incorporation and Editing.

FLORIDA
JACKSON RIVER QUADRANGLE
7½-MINUTE SERIES

85° 00' (Port Caladen)
29° 52' 30"
T. 7 S.
T. 8 S.
47° 30'
280 000
FEET
29° 45'
85° 00' (Apalachicola)



Mapped by the Geological Survey
1943

TRUE NORTH
MAGNETIC NORTH
APPROXIMATE MEAN
DECLINATION, 1943

Scale 1/31680
0 500 1000 1500 2000 2500 Yards
0 1000 2000 3000 4000 5000 6000 7000 Feet
0 5 10 Kilometers
Contour interval 10 feet
Datum is mean sea level

USGS
Historical File
Topographic Division

U. S. G. S.
FILE COPY
Incorporation and Editing.

Polyconic projection. 1927 North American datum
5000 yard grid based on U. S. zone system, C
10000 foot grid based on Florida (North)
rectangular coordinate system
Certain land lines are omitted because of
insufficient data. All recovered corners are shown.
Information for dashed land lines supplied
by the State of Florida
JACKSON RIVER, FLA.
Edition of 1945
N2945-W8500/7.5

FEB 29 1945

2165