

(BEE RIDGE)

FLORIDA

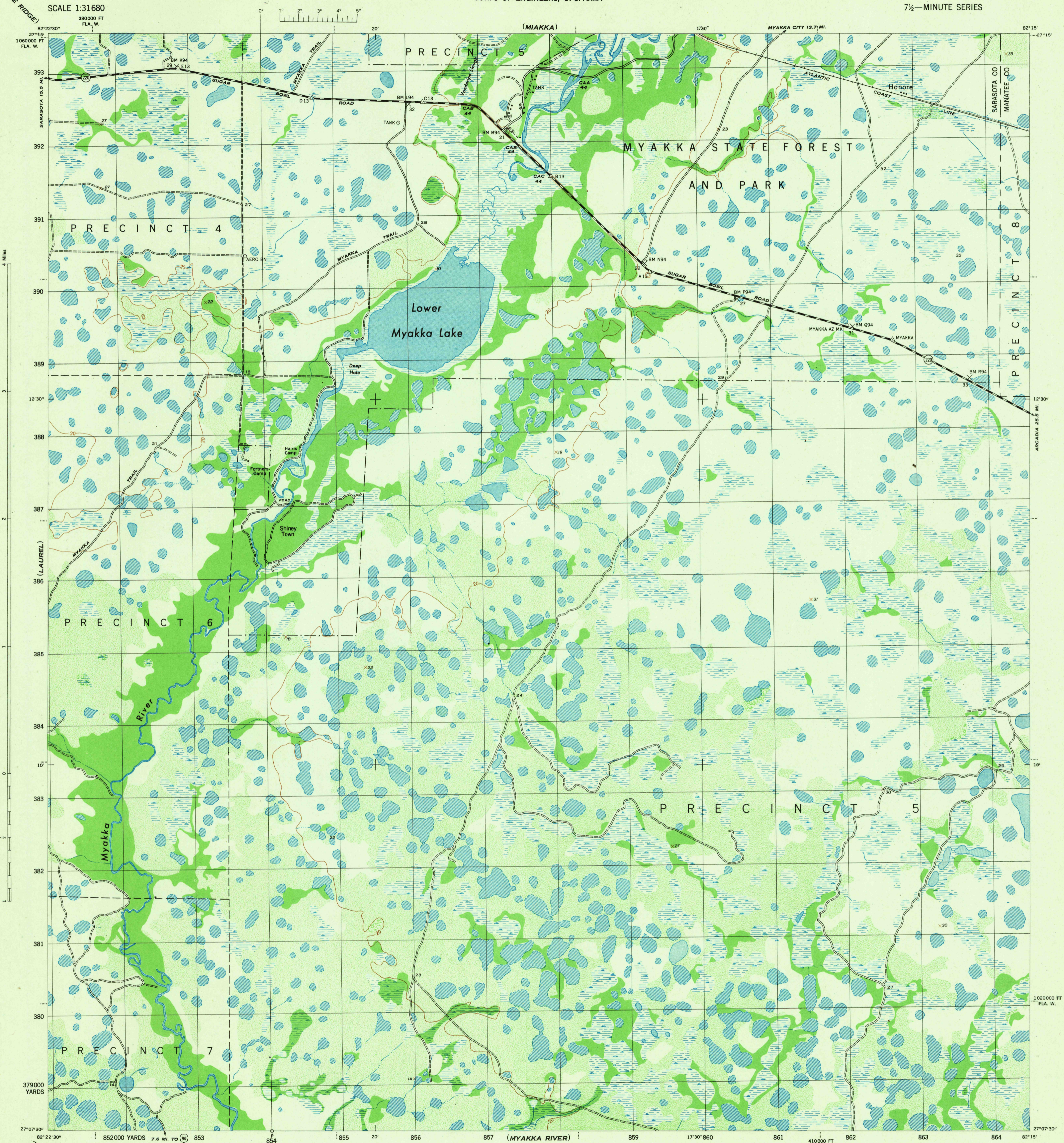
SCALE 1:31680

380000 FT  
FLA. W.

WAR DEPARTMENT  
CORPS OF ENGINEERS, U. S. ARMY

LOWER MYAKKA LAKE QUADRANGLE

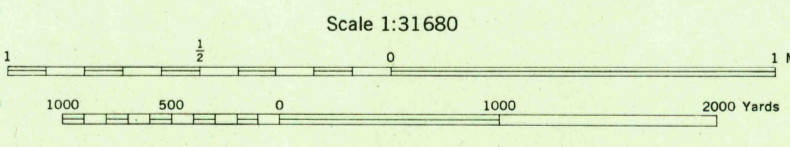
7 1/2-MINUTE SERIES



Mapped by the U. S. Coast and Geodetic Survey under the direction of the Chief of Engineers, U. S. Army, 1942. Control by the U. S. Coast and Geodetic Survey. Planimetry by U. S. C. & G. S. from 1942 air photographs. Planimetric topography and field edit by U. S. C. & G. S., 1944. Polyconic projection, North American datum of 1927. Recoverable horizontal control stations of less than third order accuracy are shown by circles.

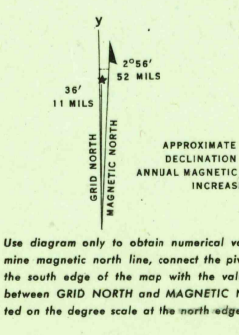
**ROAD CLASSIFICATION 1944**

Dependable hard-surface, heavy-duty road. Lapse surface graded, dry-weather road. U. S. route 78. Secondary, hard-surface, all-weather road. Dirt road. State route 20. More than two lanes indicated by note along road with tick at point of change 3 LANE 4 LANE. THIS MAP COMPLIES WITH THE NATIONAL STANDARD MAP ACCURACY REQUIREMENTS.



CONTOUR INTERVAL 20 FEET  
DATUM IS MEAN SEA LEVEL

ONE THOUSAND YARD GRID COMPUTED FROM GRID SYSTEM FOR PROGRESSIVE MAPS IN THE U. S. ZONE B. U. S. C. & G. S. SPECIAL PUBLICATION NO. 59. THE LAST THREE DIGITS OF THE GRID NUMBERS ARE OMITTED. THE STATE GRIDS ARE INDICATED AT 10,000 FOOT INTERVALS. NOTE: OFFICES USING THIS MAP WILL HAVE BEEN CORRECTED AND REVISIONS MADE TO THEM ATTENTION AND MAIL DIRECT TO "THE CHIEF OF ENGINEERS, WASHINGTON, D. C."



REPRODUCED BY THE U. S. COAST AND GEODETIC SURVEY, AMS NO. 120426

**WOODLAND CLASSIFICATION**

Dense woodland	Dense brush
Scattered brush and trees	Orchard
Marsh or swamp	Low ground, intermittently flooded

LOWER MYAKKA LAKE, FLA.  
N2707.5-W8215.7.5  
EDITION OF 1944

USGS  
HISTORICAL FILE  
TOPOGRAPHIC DIVISION