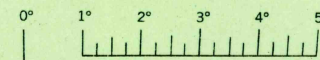
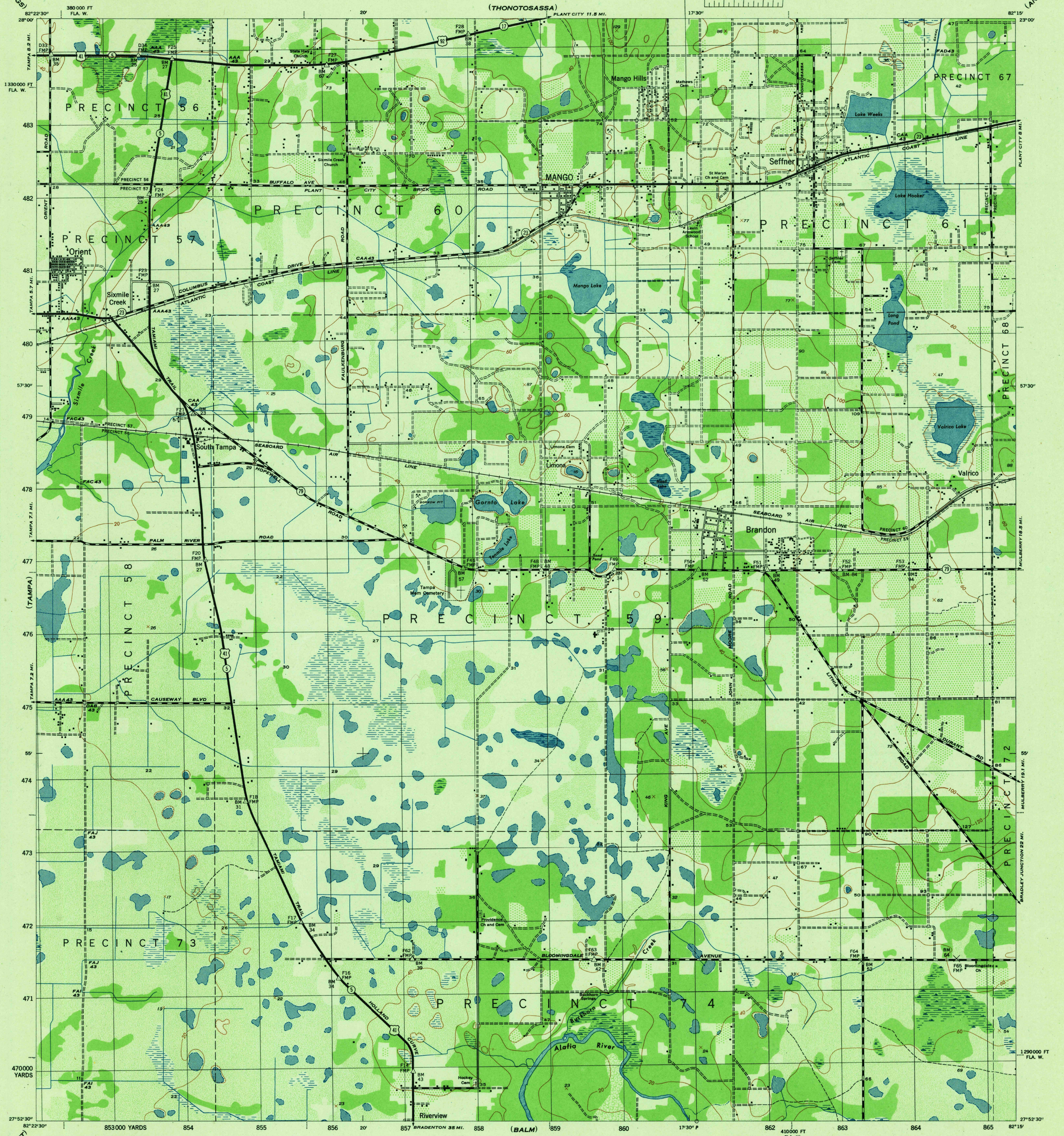


(THONOTOSASSA)



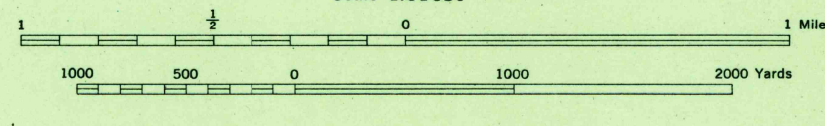
(ANTOCH)



Mapped by the U. S. Coast and Geodetic Survey under the direction of the Chief of Engineers, U. S. Army, 1942
Control by Fla. G. S., U. S. G. S. and U. S. C. & G. S.
Planimetry by the U. S. C. & G. S. from 1942 air photographs.
Planimetric topography and field edit by U. S. C. & G. S., 1943.
Polyconic projection, North American datum of 1927.
Recoverable horizontal control stations of less than third order accuracy are shown by circles.

ROAD CLASSIFICATION 1943
Dependable hard-surface, heavy-duty road. Loose-surface graded, dry-weather road. U. S. route 71
Secondary, hard-surface, all-weather road. Dirt road. State route 26
More than two lanes indicated by note along road with tick at point of change. 3 LANE | 4 LANE
THIS MAP COMPLIES WITH THE NATIONAL STANDARD MAP ACCURACY REQUIREMENTS

Scale 1:31680



CONTOUR INTERVAL 20 FEET
DATUM IS MEAN SEA LEVEL

ONE THOUSAND YARD GRID COMPUTED FROM "GRID SYSTEM FOR PROGRESSIVE MAPS IN THE U. S." ZONE B, U. S. C. & G. S. SPECIAL PUBLICATION NO. 59
THE LAST THREE DIGITS OF THE GRID NUMBERS ARE OMITTED
THE STATE GRID IS INDICATED AT 10,000 FOOT INTERVALS
NOTE: OFFICERS USING THIS MAP WILL MARK REVISIONS AND ADDITIONS WHICH COME TO THEIR ATTENTION AND MAIL DIRECT TO THE CHIEF OF ENGINEERS, WASHINGTON, D. C.

REPRODUCED BY THE U. S. COAST AND GEODETIC SURVEY, AWS NO. 120889

WOODLAND CLASSIFICATION

Dense woodland	Dense brush
Scattered brush and trees	Orchard
Marsh or swamp	Low ground, intermittently flooded

Use diagram only to obtain numerical values. To determine magnetic north line, connect the point "P" on the south edge of the map with the value of the angle between GRID NORTH and MAGNETIC NORTH, as plotted on the degree scale of the north edge of the map.

MANGO, FLA.
N2752.5-W8215.7.5
EDITION OF 1944

USGS
HISTORICAL FILE
TOPOGRAPHIC DIVISION

USGS
HISTORICAL FILE
TOPOGRAPHIC DIVISION