

FLORIDA SCALE 1:31680

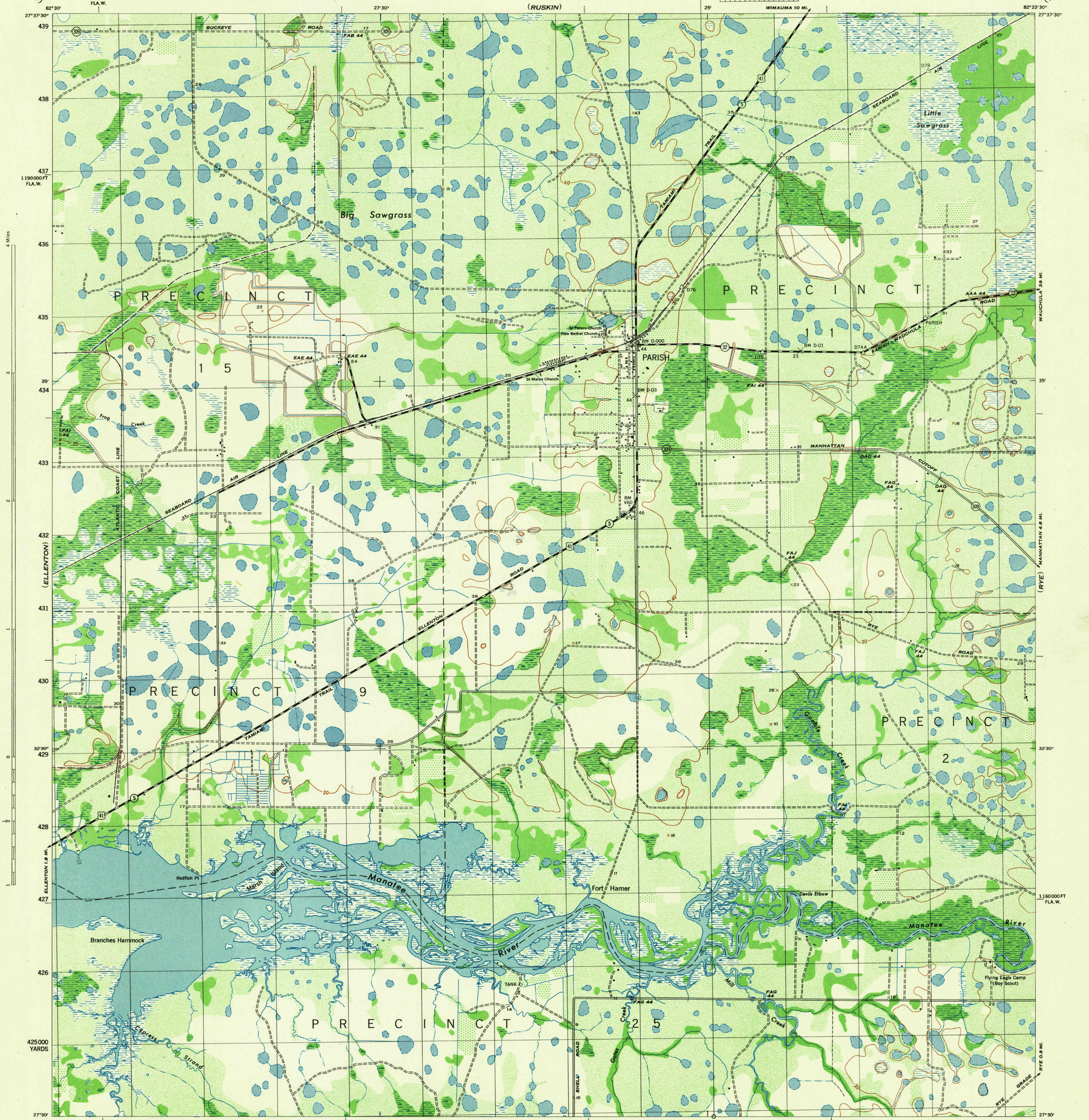
MANATEE COUNTY

340,000 FT
FLA. W.

WAR DEPARTMENT
CORPS OF ENGINEERS, U. S. ARMY

PARISH QUADRANGLE

7 1/2-MINUTE SERIES

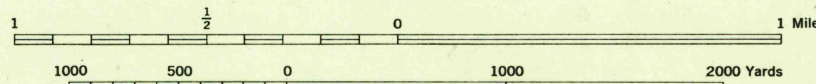


Mapped by the U. S. Coast and Geodetic Survey under the direction of the Chief of Engineers, U. S. Army, 1942
 Control by the U. S. Coast and Geodetic Survey.
 Planimetry by the U. S. C. & G. S. from 1942 air photographs.
 Planimetric topography and field edit by U. S. C. & G. S., 1944.
 Polyconic projection, North American datum of 1927.
 Recoverable horizontal control stations of less than third order accuracy are shown by circles.

ROAD CLASSIFICATION 1944

Dependable hard surface, heavy-duty road. U. S. route
 Secondary, hard surface, all-weather road. Dirt road. State route
 More than two lanes indicated by note along road with tick at point of change. 3 LANE | 4 LANE
 THIS MAP COMPLIES WITH THE NATIONAL STANDARD MAP ACCURACY REQUIREMENTS

Scale 1:31680



CONTOUR INTERVAL 20 FEET
DATUM IS MEAN SEA LEVEL

ONE THOUSAND YARD GRID COMPUTED FROM "GRID SYSTEM FOR PROGRESSIVE MAPS IN THE U. S. ZONE B. U. S. C. & G. S. SPECIAL PUBLICATION NO. 98"
 THE LAST THREE DIGITS OF THE GRID NUMBERS ARE OMITTED
 THE STATE GRIDS ARE INDICATED AT 10,000 FOOT INTERVALS
 NOTE: OFFICERS USING THIS MAP WILL MAKE BEARING CORRECTIONS AND ADJUSTMENTS WHICH OWE TO THEIR ATTENTION AND SHALL DIRECT TO "THE CHIEF OF ENGINEERS, WASHINGTON, D. C."

Use diagram only to obtain numerical values. To determine magnetic north line, connect the point "M" on the south edge of the map with the value of the angle between GRID NORTH and MAGNETIC NORTH, as plotted on the degree scale of the north edge of the map.

REPRODUCED BY THE U. S. COAST AND GEODETIC SURVEY, ARE NO. 120993

WOODLAND CLASSIFICATION
 Dense woodland Dense brush
 Scattered brush and trees Orchard
 Marsh or swamp Low ground, intermittently flooded

PARISH, FLA.
N2730-W8222.5/7.5
EDITION OF 1944

USGS HISTORICAL FILE GEOGRAPHIC DIVISION