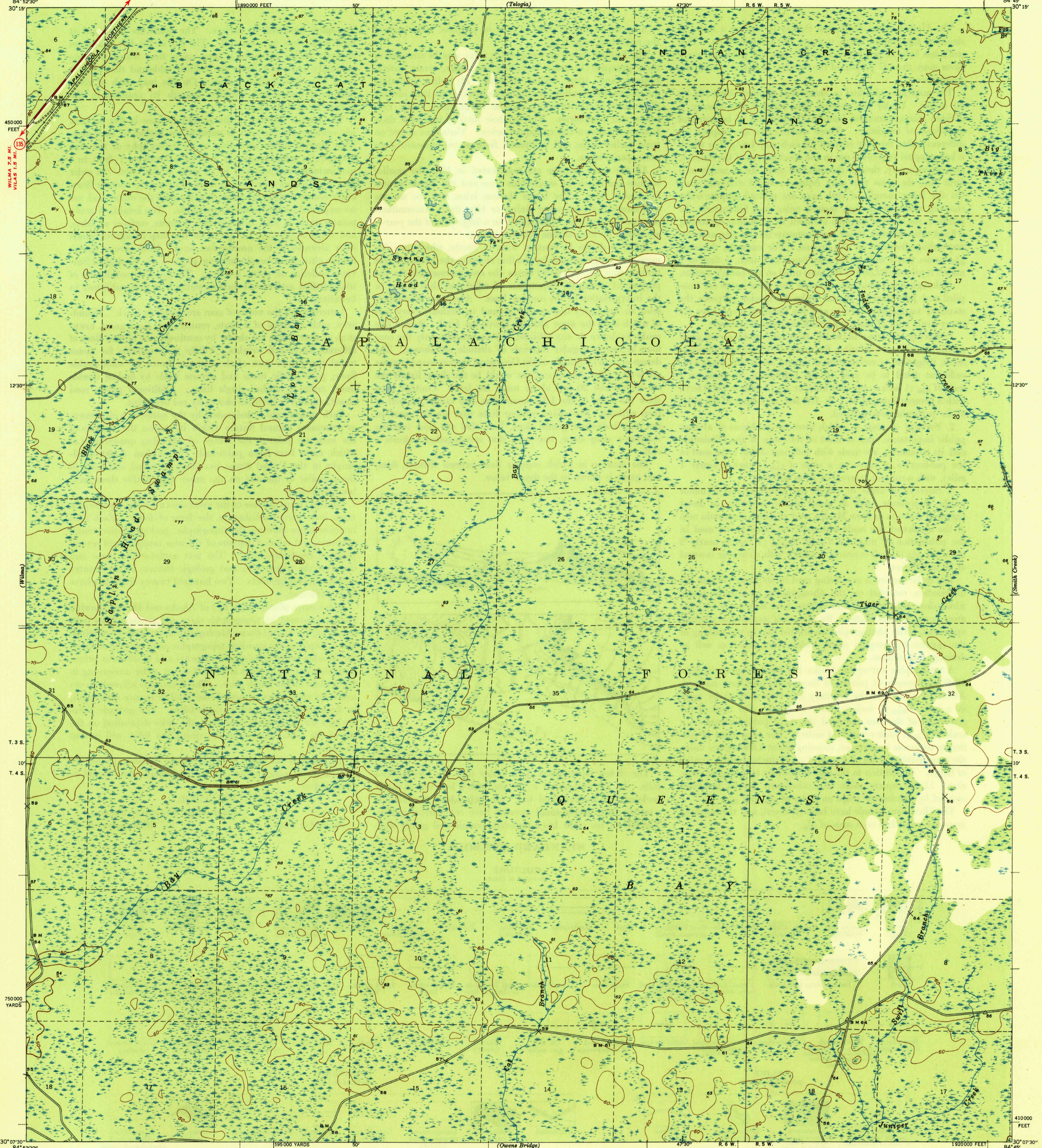
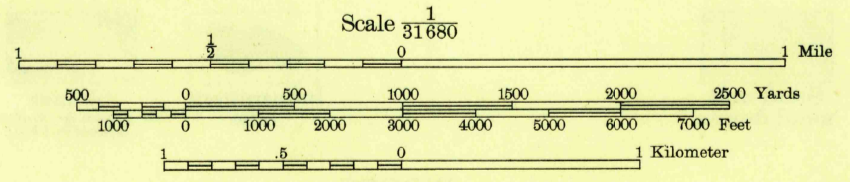


U. S. G. S.
FILE COPY
Inspection and Editing.



Mapped by the Geological Survey
1944

TRUE NORTH
MAGNETIC NORTH
APPROXIMATE MEAN
DECLINATION, 1944



Information for land lines supplied
by the State of Florida

ROAD CLASSIFICATION 1945		U. S. Route (15)
Dependable hard-surface	Dry weather roads	
Heavy-duty road	Loose-surface graded	
Secondary hard-surface	Unsurfaced, graded	
All-weather road	Dirt road	State Route (26)
More than two lanes indicated along road with tick at point of change	3 LANE, 4 LANE	

Polyconic projection. 1927 North American datum
5000 yard grid based on U. S. zone system, B
10000 foot grid based on Florida (North)
rectangular coordinate system

QUEENS BAY, FLA.
Edition of 1946

N 3007.5-W8445/7.5

U. S. G. S. USGS
Historical File
Topographic Division
Inspection and Editing.

3195

FEB 25 1946