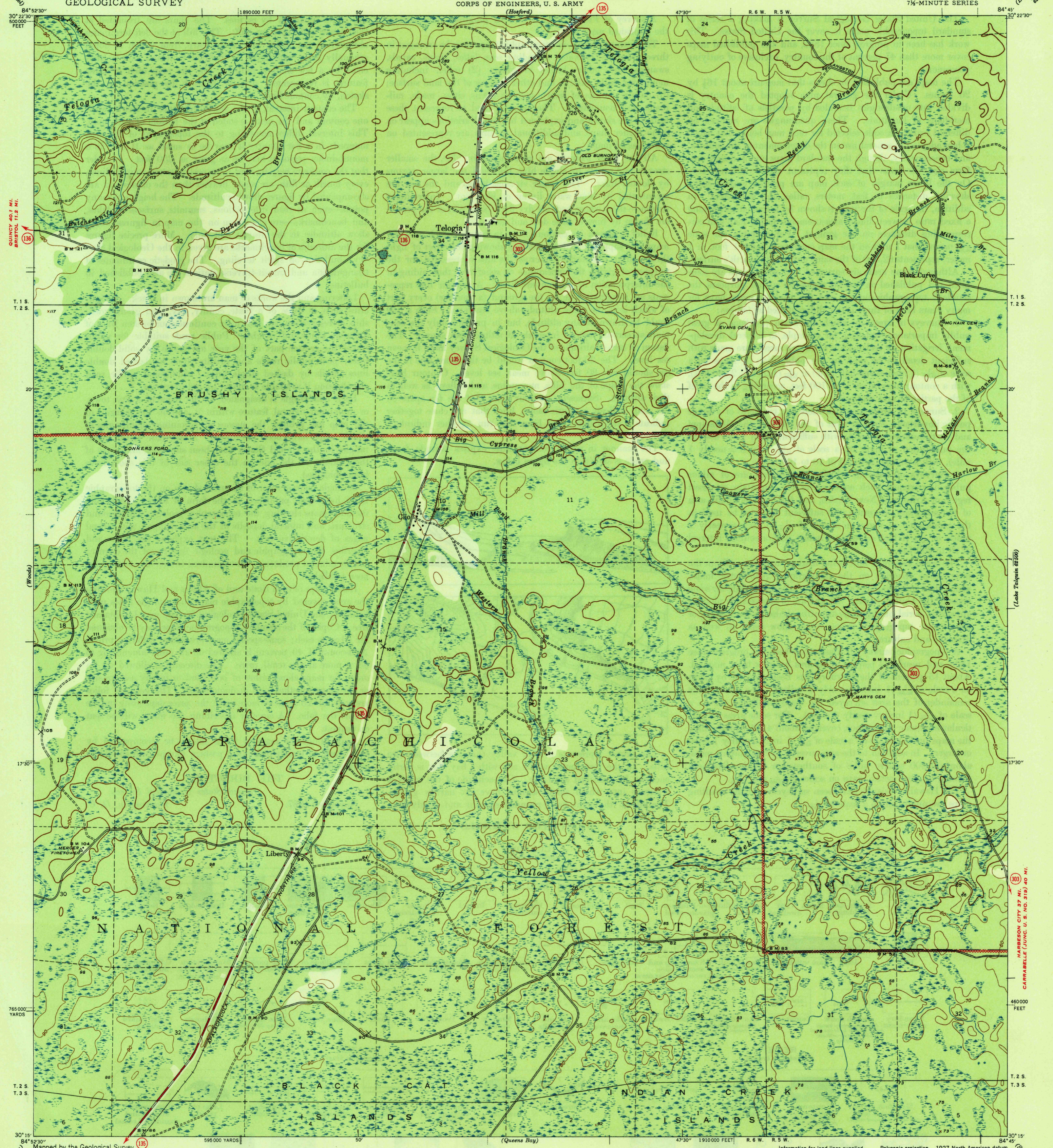


U. S. G. S.
FILE COPY
Inspection and Mailing.

UNITED STATES
DEPARTMENT OF THE INTERIOR
GEOLOGICAL SURVEY

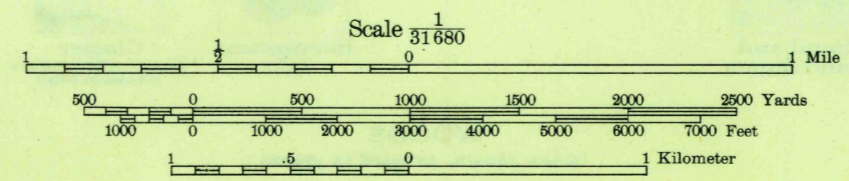
WAR DEPARTMENT
CORPS OF ENGINEERS, U. S. ARMY
(Hoford)

FLORIDA
(LIBERTY COUNTY)
TELOGIA QUADRANGLE
7 1/2-MINUTE SERIES



Mapped by the Geological Survey
1944 **VILAS 2.6 MI.**
WILMA 8.6 MI.

34°
TRUE NORTH
MAGNETIC NORTH
APPROXIMATE MEAN
DECLINATION, 1944



Contour interval 10 feet
Datum is mean sea level

Information for land lines supplied
by the State of Florida

Dependable hard-surface road	Dry weather roads	U. S. Route (15)
heavy-duty road	Loose-surface graded	
Secondary hard-surface	Unsurfaced, graded	
all-weather road	Dirt road	State Route (28)
all-weather road	Dirt road	State Route (28)

More than two lanes indicated along road with tick at point of change **3 LANE, 4 LANE**

Polyconic projection. 1927 North American datum
5000 yard grid based on U. S. zone system, B
10000 foot grid based on Florida (North)
rectangular coordinate system

TELOGIA, FLA.
Edition of 1946

N3015-W8445/7.5

USGS
Historical File
Topographic Division

3195

FEB 25 1946