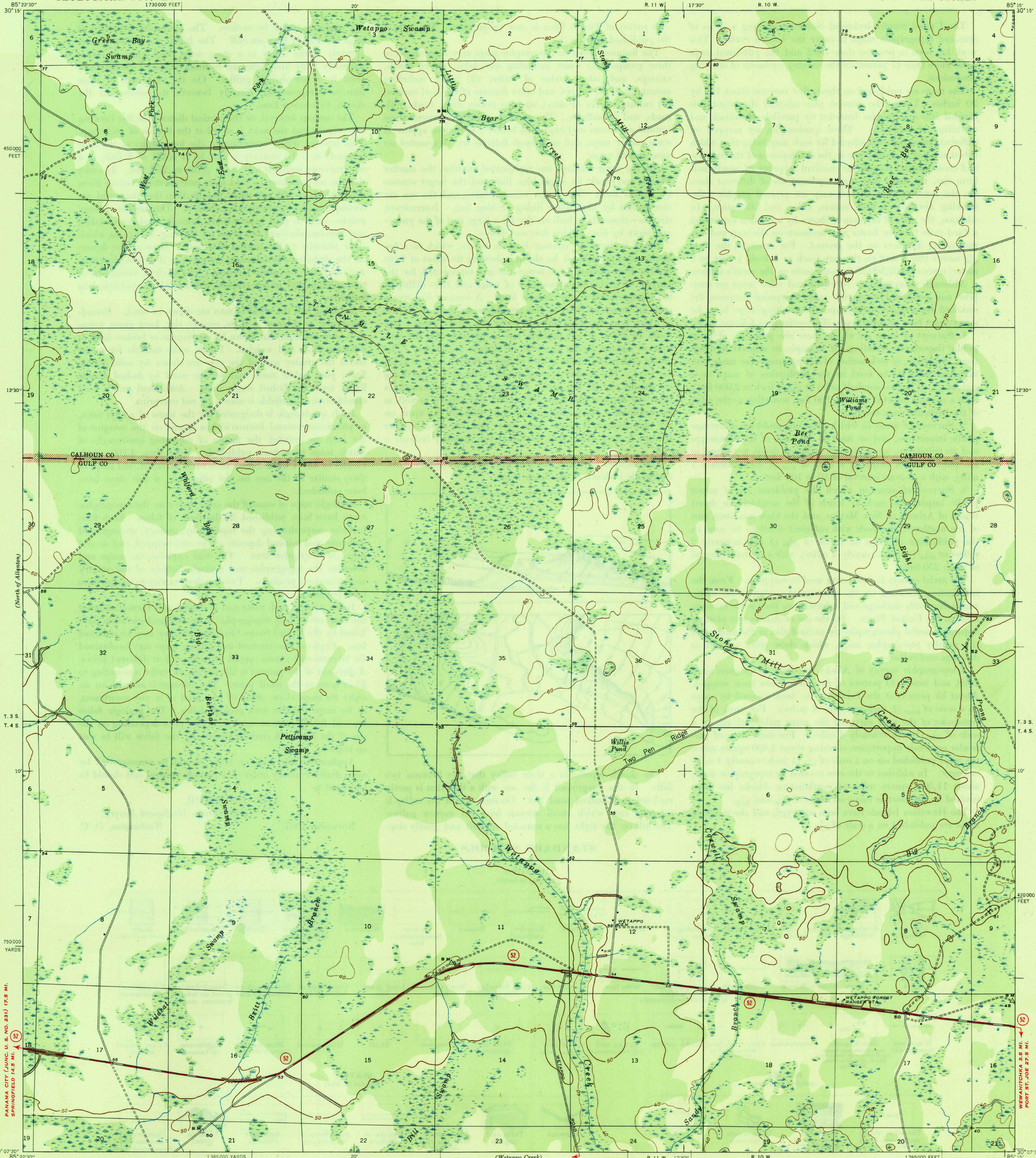


U.S.G.S.
FILE COPY
Incorporation and Editing.

UNITED STATES
DEPARTMENT OF THE INTERIOR
GEOLOGICAL SURVEY

WAR DEPARTMENT
CORPS OF ENGINEERS, U. S. ARMY

FLORIDA
TENMILE SWAMP QUADRANGLE
7½-MINUTE SERIES



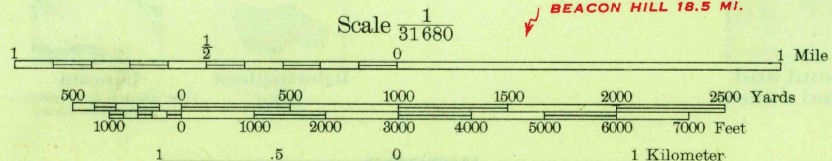
PANAMA CITY (UNC. U. S. NO. 231) 17.5 MI.
SPRINGFIELD 14.5 MI.

WEWAHITCHKA 3.5 MI.
PORT ST. JOE 27.5 MI.

Mapped by the Geological Survey
1944

(Allatona)

TRUE NORTH
MAGNETIC NORTH
APPROXIMATE MEAN
DECLINATION, 1944



ROAD CLASSIFICATION
1944
Dependable hard surface
heavy-duty road
Secondary hard surface
all-weather road
Dirt road
Dry weather roads
Loose-surface, graded
Unsurfaced, graded
Dirt road
U. S. Route (15)
State Route (52)

Polyconic projection, 1927 North American datum
5000 yard grid based on U. S. zone system, C
10000 foot grid based on Florida (North)
rectangular coordinate system
TENMILE SWAMP, FLA.
Edition of 1945
N 3007.5-W8515/7.5

USGS
Historical File
Topographic Division

APR 13 1945
3205