

Mapped by the U. S. Coast and Geodetic Survey under the direction of the Chief of Engineers, U. S. Army, 1942. Control by U.S.G.S. and U.S.C. & G.S. Planimetry by the U. S. C. & G. S. from 1942 air photographs. Planimetric topography and field edit by U. S. C. & G. S., 1944. Polyconic projection, North American datum of 1927. Recoverable horizontal control stations of less than third order accuracy are shown by circles.

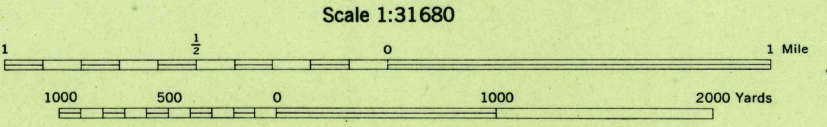
ROAD CLASSIFICATION 1944

Dependable hard surface, heavy-duty road. Loose-surface graded, dry-weather road. U. S. route (74)

Secondary, hard surface, all-weather road. Dirt road. State route (76)

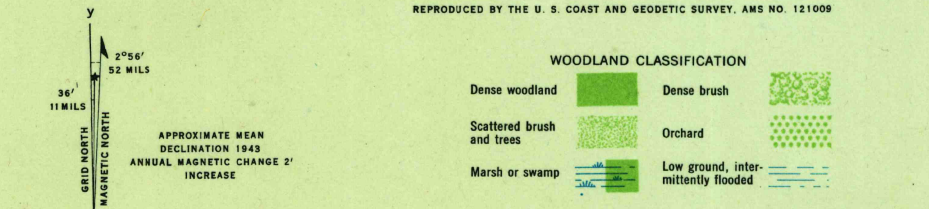
More than two lanes indicated by note along road with tick at point of change. 3 LANE 4 LANE

THIS MAP COMPLIES WITH THE NATIONAL STANDARD MAP ACCURACY REQUIREMENTS



CONTOUR INTERVAL 20 FEET
DATUM IS MEAN SEA LEVEL

ONE THOUSAND YARD GRID COMPUTED FROM "GRID SYSTEM FOR PROGRESSIVE MAPS IN THE U. S." ZONE B, U. S. C. & G. S. SPECIAL PUBLICATION NO. 59. THE LAST THREE DIGITS OF THE GRID NUMBERS ARE OMITTED. THE STATE GRIDS ARE INDICATED AT 10,000 FOOT INTERVALS. NOTE: OFFICERS USING THIS MAP WILL MARK SECTION CORRECTIONS AND NOTATIONS WHICH COME TO THEIR ATTENTION AND WILL DIRECT TO "THE CHIEF OF ENGINEERS, WASHINGTON, D. C."



WOODLAND CLASSIFICATION

Dense woodland	Dense brush
Scattered brush and trees	Orchard
Marsh or swamp	Low ground, intermittently flooded

VERNA, FLA.
N2722.5-W8215/7.5
EDITION OF 1944

USGS
HISTORICAL FILE
TOPOGRAPHIC DIVISION