

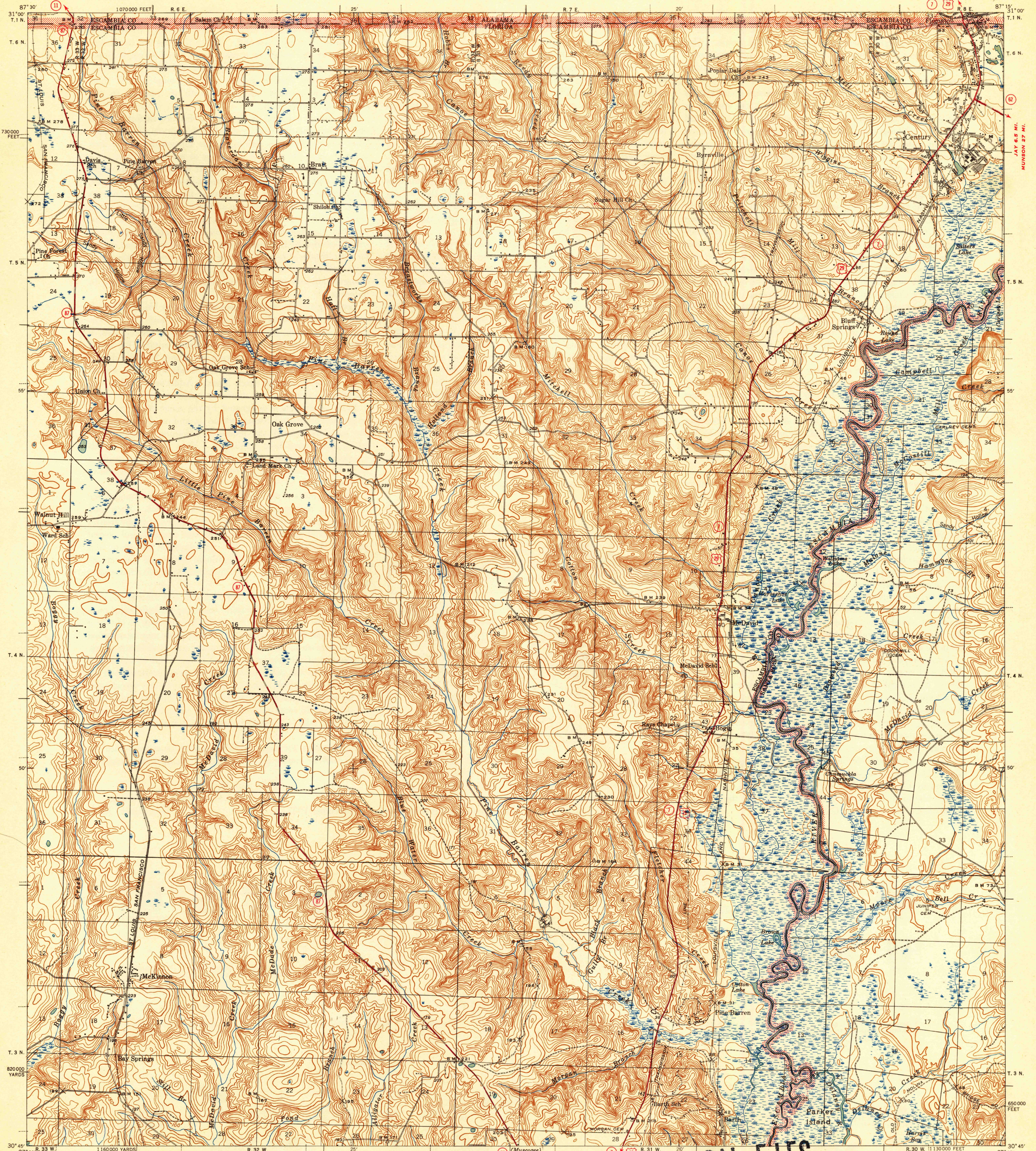
MINETTE 21.5 MI. FLOMATON 16 MI.  
ATMORE (JUNC. U. S. NO. 31) 1.6 MI.

BAY MINETTE 34.7 MI. BREWTON 17 MI.  
JUNC. U. S. NO. 31 0.8 MI.

UNITED STATES  
DEPARTMENT OF THE INTERIOR  
GEOLOGICAL SURVEY

WAR DEPARTMENT

FLORIDA-ALABAMA  
CENTURY QUADRANGLE  
15-MINUTE SERIES



Topography by J. L. Watkins,  
C. A. Killian, L. S. Howe, Jr.,  
B. O. Fridge, Jr., R. G. Carpenter,  
Ray Redfeard, and L. D. Hottel  
Surveyed in 1940-1941

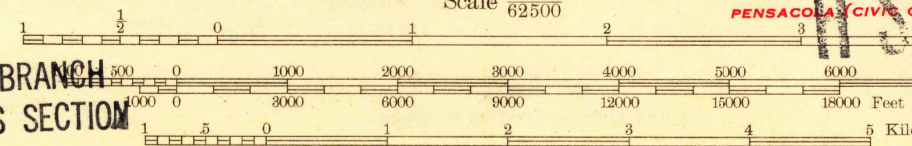
TRUE NORTH  
MAGNETIC NORTH  
APPROXIMATE MEAN  
DECLINATION, 1941

SURFACE WATER BRANCH  
SPECIAL REPORTS SECTION

JUNC. U. S. NO. 29 2.5 MI.  
PENSACOLA (CIVIC CENTER) 26 MI.

(87) (Muenzee)

(7) (128)  
MOLINO CROSSROADS 2.3 MI.  
PENSACOLA (CIVIC CENTER) 25 MI.



Contour interval 10 feet  
Datum is mean sea level

**HISTORICAL FILES**  
ROUTES USUALLY TRAVELED  
HARD IMPROVED SURFACES  
OTHER SURFACE IMPROVEMENTS  
STATE ROUTE  
**(DO NOT REMOVE)**

Polygonic projection. 1927 North American datum  
5000 yard grid based on U. S. zone system, C  
10000 foot grid based on Florida (North)  
rectangular coordinate system

CENTURY, FLA.-ALA.  
Edition of 1943  
N3045-W8715/15