

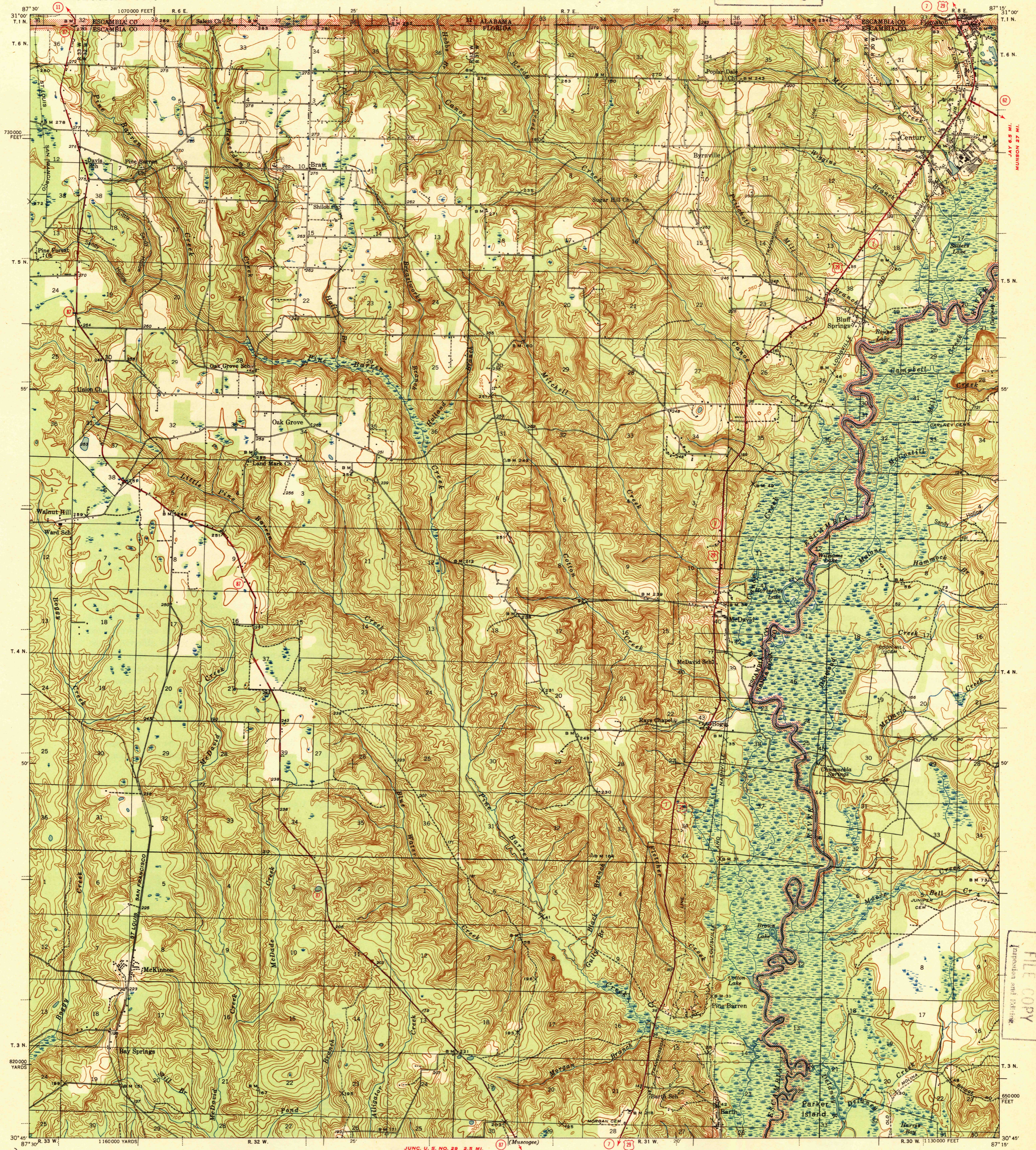
MINETTE 21.5 MI. FLOMATON 18 MI.
ATMORE (JUNC. U. S. NO. 31) 1.6 MI.

UNITED STATES
DEPARTMENT OF THE INTERIOR
GEOLOGICAL SURVEY

WAR DEPARTMENT

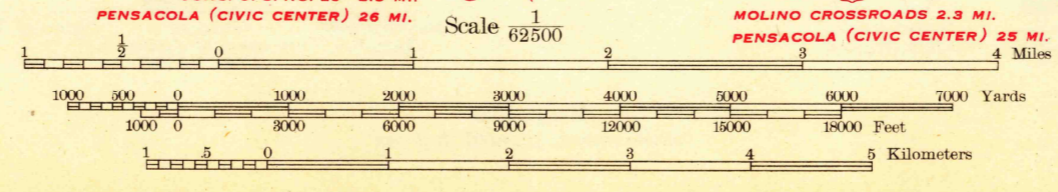
U. S. G. S.
FILE COPY
Inspection and Editing.

BAY MINETTE 34.7 MI. BREWTON 17 MI.
JUNC. U. S. NO. 31 0.8 MI.
FLORIDA-ALABAMA
CENTURY QUADRANGLE
15-MINUTE SERIES



Topography by J. L. Watkins,
C. A. Killian, L. S. Howe, Jr.,
B. O. Fridge, Jr., R. G. Carpenter,
Ray Redfern, and L. D. Hottel
Surveyed in 1940-1941

TRUE NORTH
MAGNETIC NORTH
APPROXIMATE MEAN
DECLINATION, 1941



ROUTES USUALLY TRAVELED
HARD IMPROVED SURFACES
OTHER SURFACE IMPROVEMENTS
U. S. ROUTE
Historic Route
Topographic Division

Polyconic projection. 1927 North American datum
5000 yard grid based on U. S. zone system, C
10000 foot grid based on Florida (North)
rectangular coordinate system

CENTURY, FLA.-ALA.
Edition of 1943
N3045-W8715/15

JUN 10 1943

U. S. G. S.
FILE COPY
Inspection and Editing.

3145