

707-5-1-W 1/2

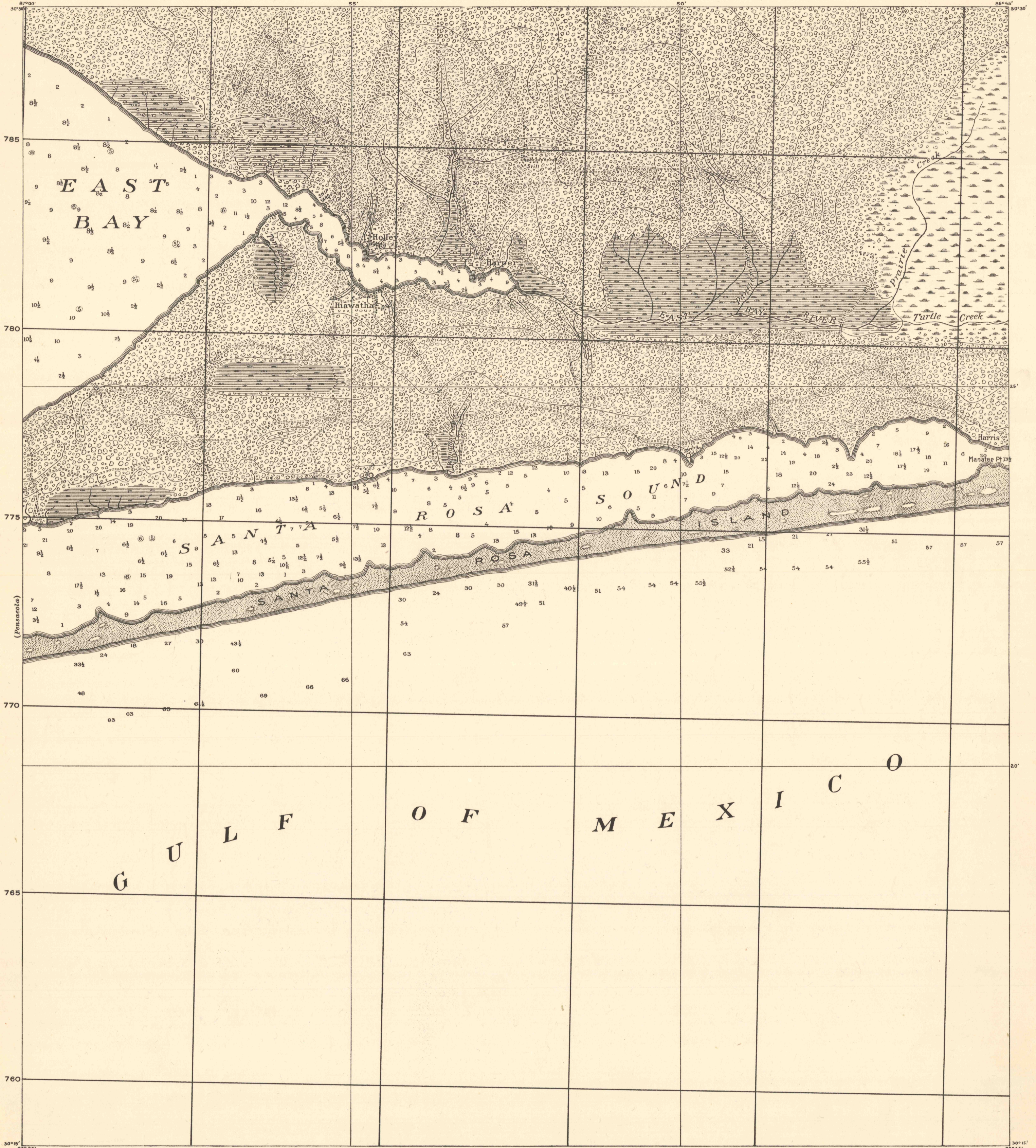
CONTROLLED RECONNAISSANCE

2630:2100/49;

FLORIDA
HOLLEY QUADRANGLE
GRID ZONE "C"

CORPS OF ENGINEERS, U. S. ARMY
TACTICAL MAP

(Milton)



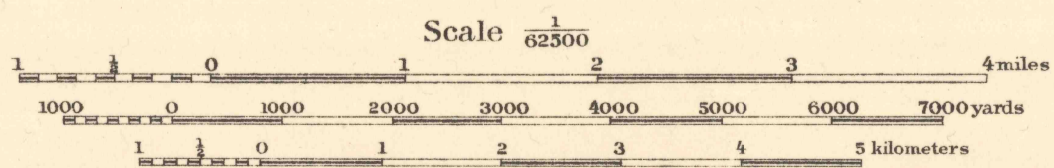
Base map compiled from U. S. C. & G. S. Chart No. 186, and other available data.

Additional field work and compilation under the direction of Col. W. M. Black, Corps of Engineers, Department Engineer, Eastern Department.

Field work by 2nd Lieut. G. H. Wyman, 11th Cav.

Soundings expressed in feet and referred to mean low water, are from U. S. C. & G. S. Chart No. 186.

Mean range of tide 1.3 feet.



Scale $\frac{1}{62500}$

Contour Interval 10 feet
Datum is mean sea level

FIVE THOUSAND YARD GRID COMPUTED FROM "GRID SYSTEM FOR PROGRESSIVE MAPS IN THE U. S." ZONE C, U. S. C. & G. S. SPECIAL PUBLICATION NO. 59. (THE LAST THREE DIGITS OF THE GRID NUMBERS ARE OMITTED)

NOTE: OFFICERS USING THIS MAP WILL MARK HEREON CORRECTIONS AND ADDITIONS WHICH COME TO THEIR ATTENTION AND MAIL DIRECT TO "THE CHIEF OF ENGINEERS, WASHINGTON, D. C."

Engineer Reproduction Plant, U. S. Army, Washington, D. C. 1921



HOLLEY, FLA