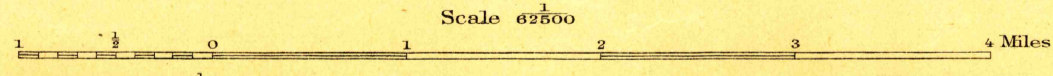
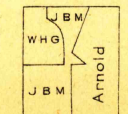


R. B. Marshall, Chief Geographer.  
Frank Sutton, Geographer in charge.  
Topography by W. H. Griffin, J. B. Metcalfe, Jr., and C. W. Arnold,  
Oklawaha River by Corps of Engineers U.S. Army.  
Control by U.S. Coast and Geodetic Survey, C. B. Kendall,  
S. E. Taylor, and J. B. Metcalfe, Jr.  
Surveyed in 1915.



Contour interval 10 feet.  
Datum is mean sea level.

USGS  
Historical File  
Topographic Division

Edition of 1916.

MAR 2 - 1917 3475

INTERLACHEN, Fla.

U.S.G.S.  
FILE COPY