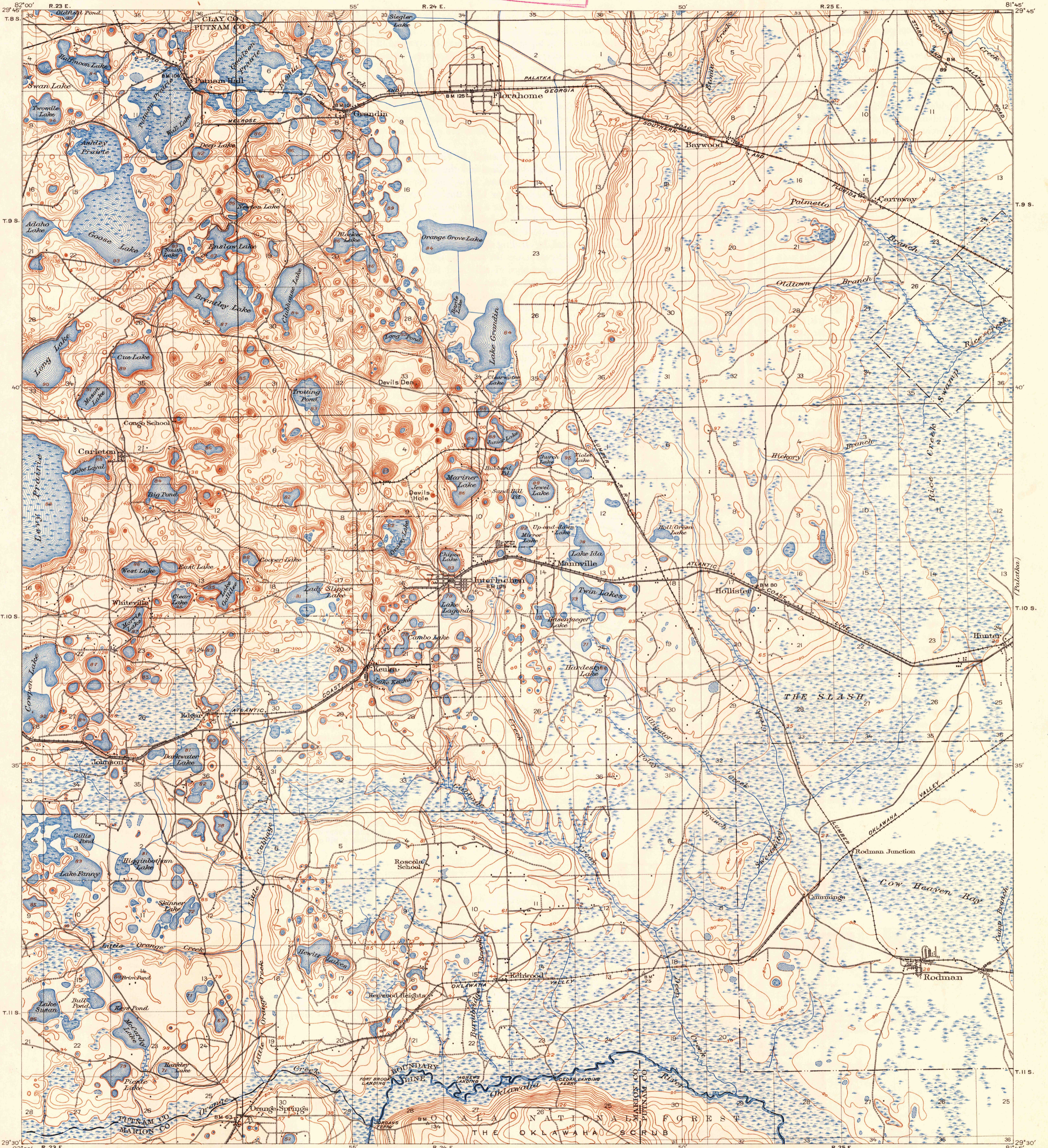
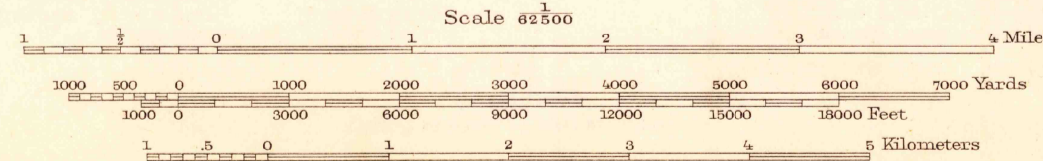
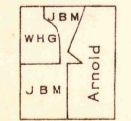


U. S. G. S.
FILE COPY
Inspection and Editing



R. B. Marshall, Chief Geographer.
Frank Sutton, Geographer in charge.
Topography by W. H. Griffin, J. B. Metcalfe, Jr., and C. W. Arnold,
Oklawaha River by Corps of Engineers U. S. Army.
Control by U. S. Coast and Geodetic Survey, C. B. Kendall,
S. E. Taylor, and J. B. Metcalfe, Jr.
Surveyed in 1915.



USGS
Historical File
Topographic Division
Edition of 1916, reprinted 1948
Polyconic projection, North American datum
INTERLACHEN, FLA.
N 2930 - W 8148 / 15

U. S. G. S.
FILE COPY
Inspection and Editing

JAN 23 1948 4320