

(STARKE)
82°00'
29°45'
1 960 000 FEET (WEST)
T. 9 S.
ORANGE HEIGHTS 8 W.
T. 9 S.
40'
T. 10 S.
35'
T. 11 S.
1 890 000 FEET (EAST)
29°30'
(OTRA)

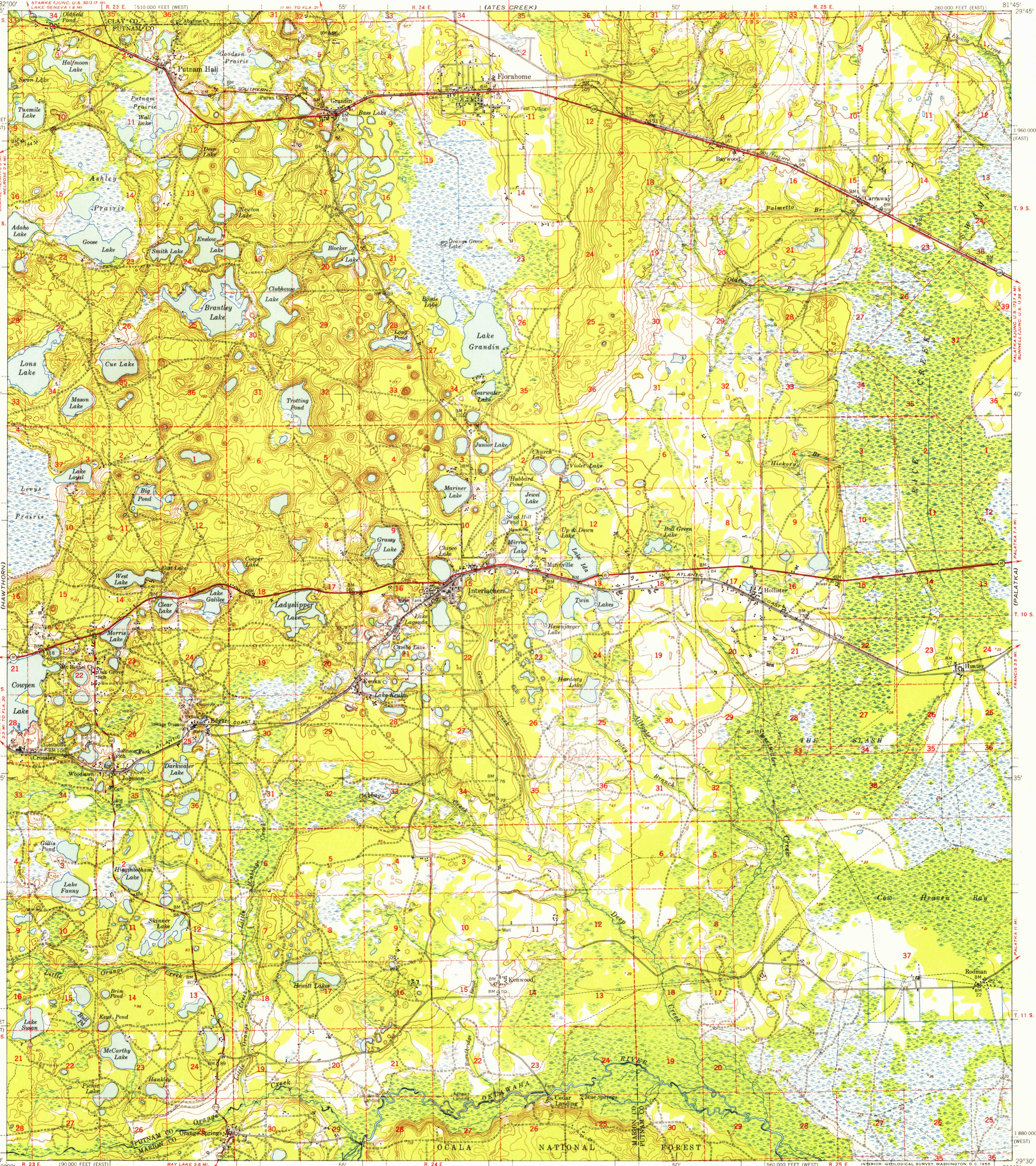
UNITED STATES
DEPARTMENT OF THE INTERIOR
GEOLOGICAL SURVEY

UNITED STATES
DEPARTMENT OF THE ARMY
CORPS OF ENGINEERS

U.S.G.S.
FILE COPY
TOPOGRAPHIC DIVISION

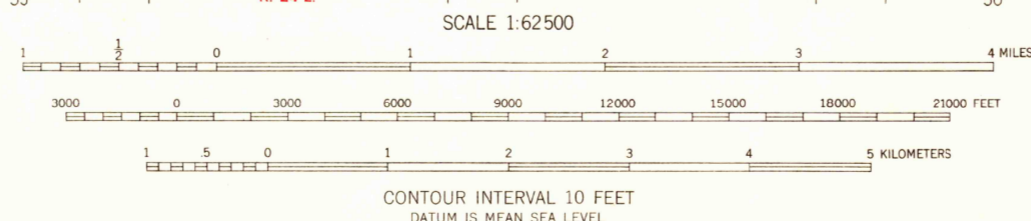
INTERLACHEN QUADRANGLE
FLORIDA
15 MINUTE SERIES (TOPOGRAPHIC)

(BOSTWICK)



Mapped by the Army Map Service
Published for civil use by the Geological Survey
Control by US&GS, USCE, and Florida Geodetic Survey
Topography from aerial photographs by photogrammetric methods
Aerial photographs taken 1946-1947. Field check 1949
Polyconic projection. 1927 North American datum
10,000-foot grids based on Florida coordinate system,
east and west zones
No distinction is made between dwellings, barns,
commercial and industrial buildings
Dashed land lines indicate approximate locations
Unchecked elevations are shown in brown

TRUE NORTH
MAGNETIC NORTH
APPROXIMATE MEAN
DECLINATION, 1949



USGS
Historical File
Topographic Division

ROAD CLASSIFICATION
Heavy-duty 4 LANE 16 LANE Light-duty
Medium-duty 4 LANE 6 LANE Unimproved dirt
U. S. Route State Route



U.S.G.S.
FILE COPY
TOPOGRAPHIC DIVISION

INTERLACHEN, FLA.
N 2930-W 8145/15
1949

THIS MAP COMPLIES WITH NATIONAL MAP ACCURACY STANDARDS
FOR SALE BY U. S. GEOLOGICAL SURVEY, WASHINGTON 25, D. C.
A FOLDER DESCRIBING TOPOGRAPHIC MAPS AND SYMBOLS IS AVAILABLE ON REQUEST

NOV 25 1955
2625