

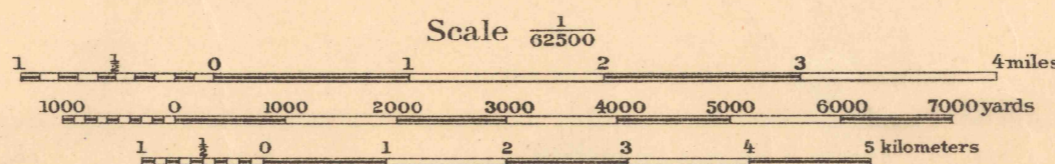


Colonel W. M. Black, Corps of Engineers, Chief Engineer Officer.  
Base map compiled from U. S. Coast & Geodetic Survey Charts Nos. 169 and 584.

Field work by 1st. Lieut. Harold Geiger, C. A. C., U. S. A.  
Jan. and Feb. 1911.

Fathom lines referred to mean low water

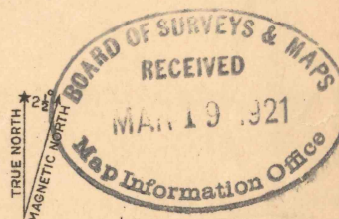
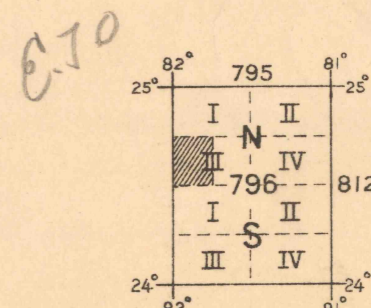
*Geog. Bd. Decision*



Contour Interval 10 feet  
Datum is mean sea level

NOTE: OFFICERS USING THIS MAP WILL MARK HEREON CORRECTIONS AND ADDITIONS WHICH COME TO THEIR ATTENTION AND MAIL DIRECT TO "THE CHIEF OF ENGINEERS, WASHINGTON, D.C."

FIVE THOUSAND YARD GRID COMPUTED FROM "GRID SYSTEM FOR PROGRESSIVE MAPS IN THE U.S." ZONE B, U. S. C. & G. S. SPECIAL PUBLICATION NO. 59. (THE LAST THREE DIGITS OF THE GRID NUMBERS ARE OMITTED.)



APPROXIMATE MEAN DECLINATION 1921

KEY WEST, FLA.

Engineer Reproduction Plant, U. S. Army, Washington Barracks, D.C. 1921

Board of Surveys & Maps  
FILE COPY  
Map Information Office