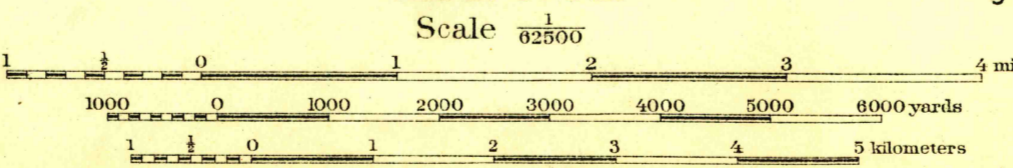
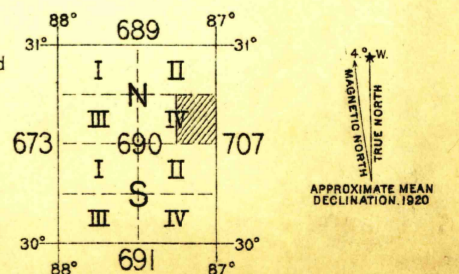


Field work and compilation under the direction of Colonel H. Taylor, Corps of Engineers, U. S. A. Department Engineer, Eastern Department. Compiled from Coast and Geodetic chart No. 186, map of Santa Rosa County and other available data. Field work by Lieut. Franklin Babcock, C.A.C. Nov. - Dec. 1916



- T.S. Turpentine still
- School House
- Pines
- Bushy scrub oak except on stream banks and islands, where grow a variety of species.

Reproduction by U.S. Lake Survey Office, Detroit, Mich.



**HISTORICAL FILES**  
(DO NOT REMOVE)

NOTE: OFFICERS USING THIS MAP WILL MARK HEREON CORRECTIONS AND ADDITIONS WHICH COME TO THEIR ATTENTION AND MAIL DIRECT TO THE CHIEF OF ENGINEERS, WASHINGTON, D.C.

Milton