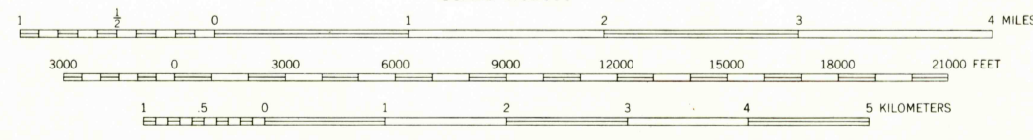
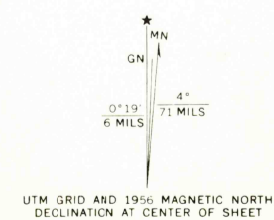


Mapped, edited, and published by the Geological Survey  
Control by USGS and USC&GS

Topography by plane-table surveys 1933-1934. Culture revised from aerial photographs taken 1954-1955. Field check 1956

Hydrography compiled from USC&GS chart 870 (1955)

Projection—1927 North American datum  
10,000-foot grid based on Florida coordinate system, north zone  
1000-meter Universal Transverse Mercator grid ticks,  
zone 16, shown in blue



CONTOUR INTERVAL 10 FEET  
DATUM IS MEAN SEA LEVEL  
DEPTH CURVES AND SOUNDINGS IN FEET—DATUM IS MEAN LOW WATER  
SHORELINE SHOWN REPRESENTS THE APPROXIMATE LINE OF MEAN HIGH WATER  
THE MEAN RANGE OF TIDE IS APPROXIMATELY 1/2 FOOT

ROAD CLASSIFICATION  
Medium-duty ——— Light-duty ———  
Unimproved dirt ———  
U.S. Route ——— State Route ———



USGS  
Historical File  
Topographic Division

NICEVILLE, FLA.  
N3030—W8615/15  
1956

FOR SALE BY U. S. GEOLOGICAL SURVEY, WASHINGTON 25, D. C.  
A FOLDER DESCRIBING TOPOGRAPHIC MAPS AND SYMBOLS IS AVAILABLE ON REQUEST

AMS 3745 III—SERIES V747

SEP 2 1 1964

4295