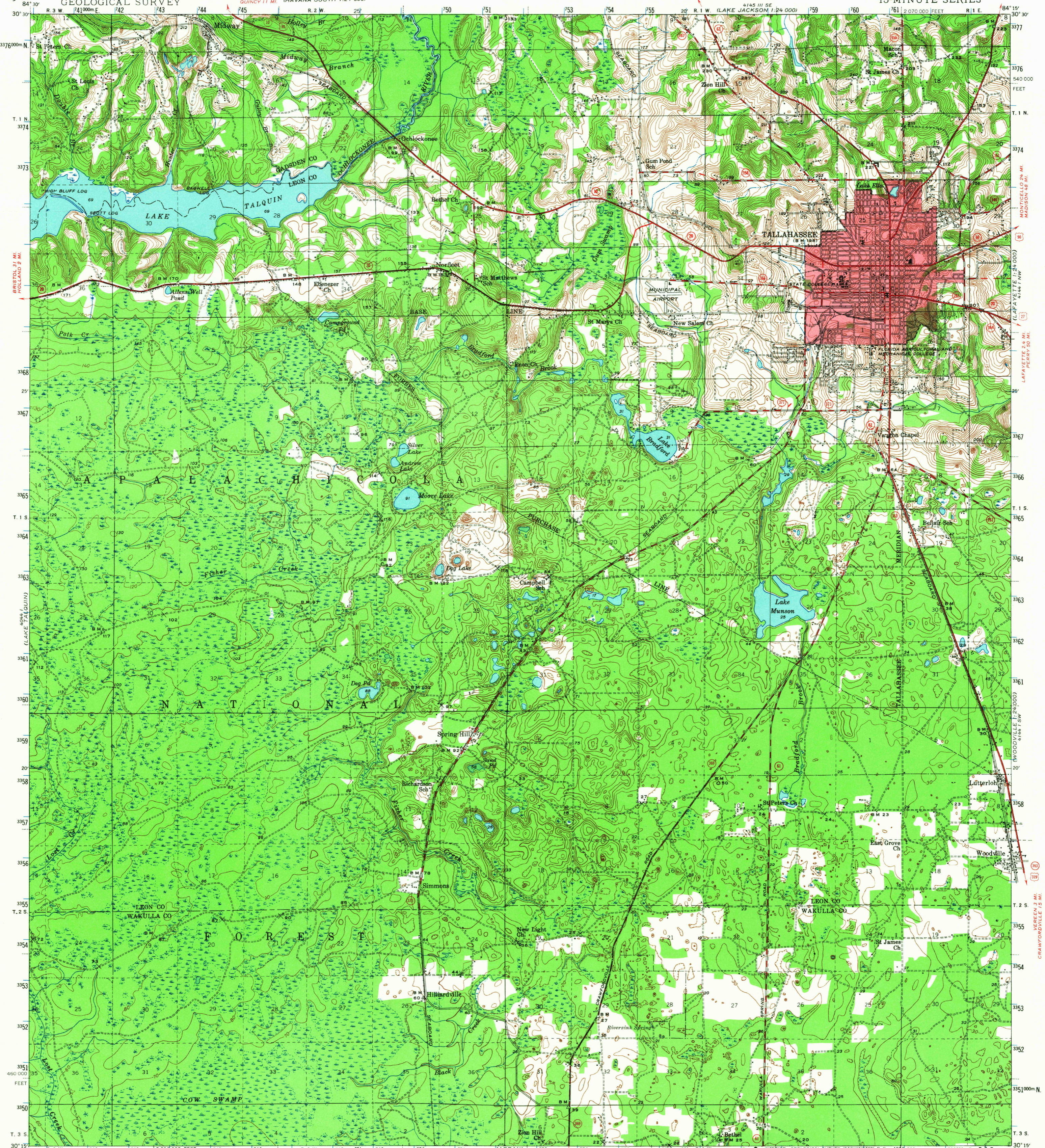


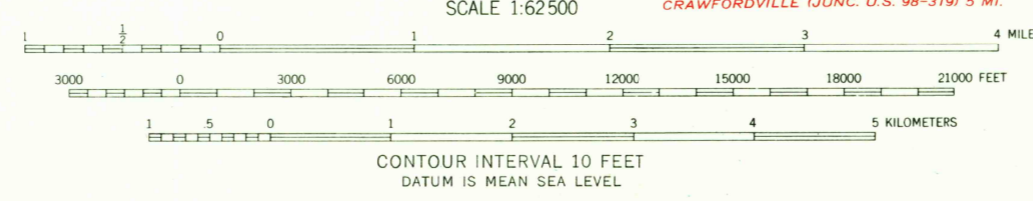
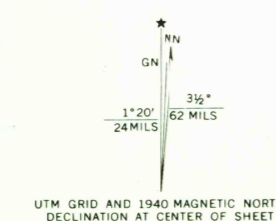
UNITED STATES
DEPARTMENT OF THE INTERIOR
GEOLOGICAL SURVEY

FLORIDA
TALLAHASSEE QUADRANGLE
15-MINUTE SERIES



Topography by G. E. Sisson, S. E. Clement,
S. L. Parker, H. F. Ewing, and E. R. Batteen
Surveyed in 1938-1940

Red tint indicates areas in which only
landmark buildings are shown



FOR SALE BY U.S. GEOLOGICAL SURVEY, WASHINGTON, D. C. 20242
A FOLDER DESCRIBING TOPOGRAPHIC MAPS AND SYMBOLS IS AVAILABLE ON REQUEST

ROAD CLASSIFICATION

Heavy-duty	Light-duty
Medium-duty	Unimproved dirt

U.S. Route USGS Route

Historical File
Topographic Division

Polyconic projection. 1927 North American datum
10,000-foot grid based on Florida (North)
rectangular coordinate system
1000-meter Universal Transverse Mercator grid ticks,
zone 16, shown in blue

Land lines southwest of Forbes Purchase Line
by the State of Florida

TALLAHASSEE, FLA.
N 3015-W8415/15
1940
AMS 4144 IV-SERIES V747

2705
FEB 2 1967