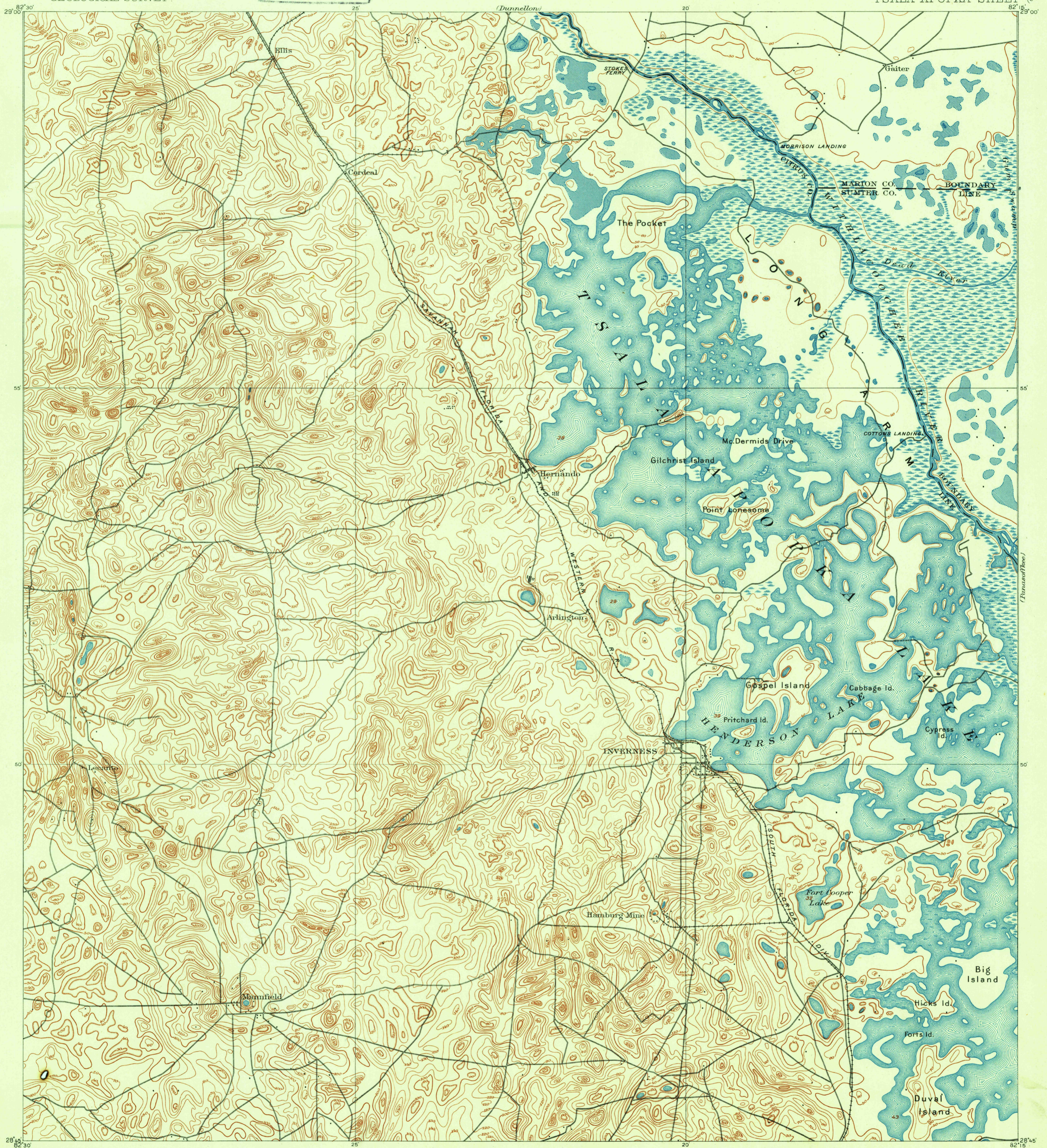
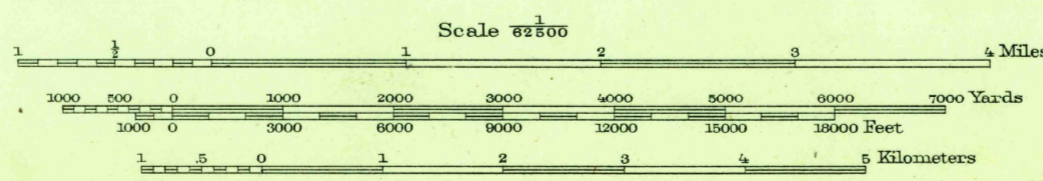


U.S.G.S.
FILE COPY
Inspection and Editing.



Henry Gannett, Chief Topographer.
Gilbert Thompson, Chief Geographer.
Control by H.L. Baldwin Jr.
Topography by C.W. Goodlove.
under direction of H.L. Baldwin Jr.
Surveyed in 1893.



USGS
Historical File
Topographic Division

Edition of May 1895, reprinted 1950.
Polyconic projection.
Surveyed by reconnaissance methods

TSALA APOPKA, FLA.
N2845-W8215/15

FOR SALE BY U.S. GEOLOGICAL SURVEY, WASHINGTON 25, D. C.
A FOLDER DESCRIBING TOPOGRAPHIC MAPS AND SYMBOLS IS AVAILABLE ON REQUEST

See map under new name - Inverness
name to be changed to Inverness when the map is series converted
JAN 24 1951 3200