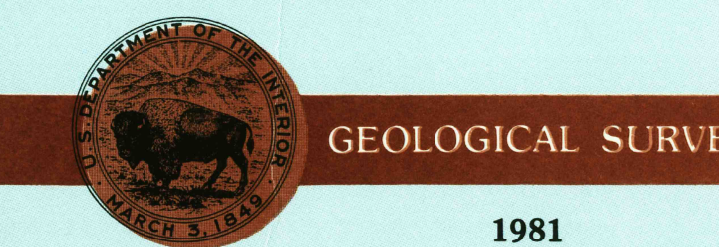


30 X 60 MINUTE QUADRANGLE SHOWING

- Contours and elevations in meters
- Highways, roads and other manmade structures
- Water features
- Woodland areas
- Geographic names



Produced by the United States Geological Survey in cooperation with State of Georgia agencies. Compiled from USGS 1:250,000-scale topographic maps dated 1972-1974. Planimetry revised from aerial photographs taken 1974 and other source data. Revised information not field checked. Map edited 1981.

Projection and 10 000-meter grid, zone 17; Universal Transverse Mercator. 25 000-foot grid ticks based on Georgia coordinate system, west and east zones.

1927 North American Datum. To place on the predicted North American Datum 1983 move the projection lines 16 meters south and 11 meters west. There may be private or holdings within the boundaries of the National or State reservations shown on this map.

CONTOUR INTERVAL 10 METERS
NATIONAL GEODETIC VERTICAL DATUM OF 1929
ELEVATIONS SHOWN TO THE NEAREST METRE

THIS MAP COMPLIES WITH NATIONAL MAP ACCURACY STANDARDS

CONVERSION TABLE		DECLINATION DIAGRAM		ADJOINING MAPS			
Meters	Feet	MAGNETIC DECLINATION		1	2	3	
1	3.2808			4	5		
2	6.5617			6	7	8	
3	9.8425						
4	13.1234						
5	16.4042						
6	19.6850						
7	22.9659						
8	26.2467						
9	29.5275						
10	32.8084						

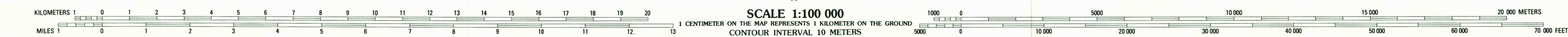
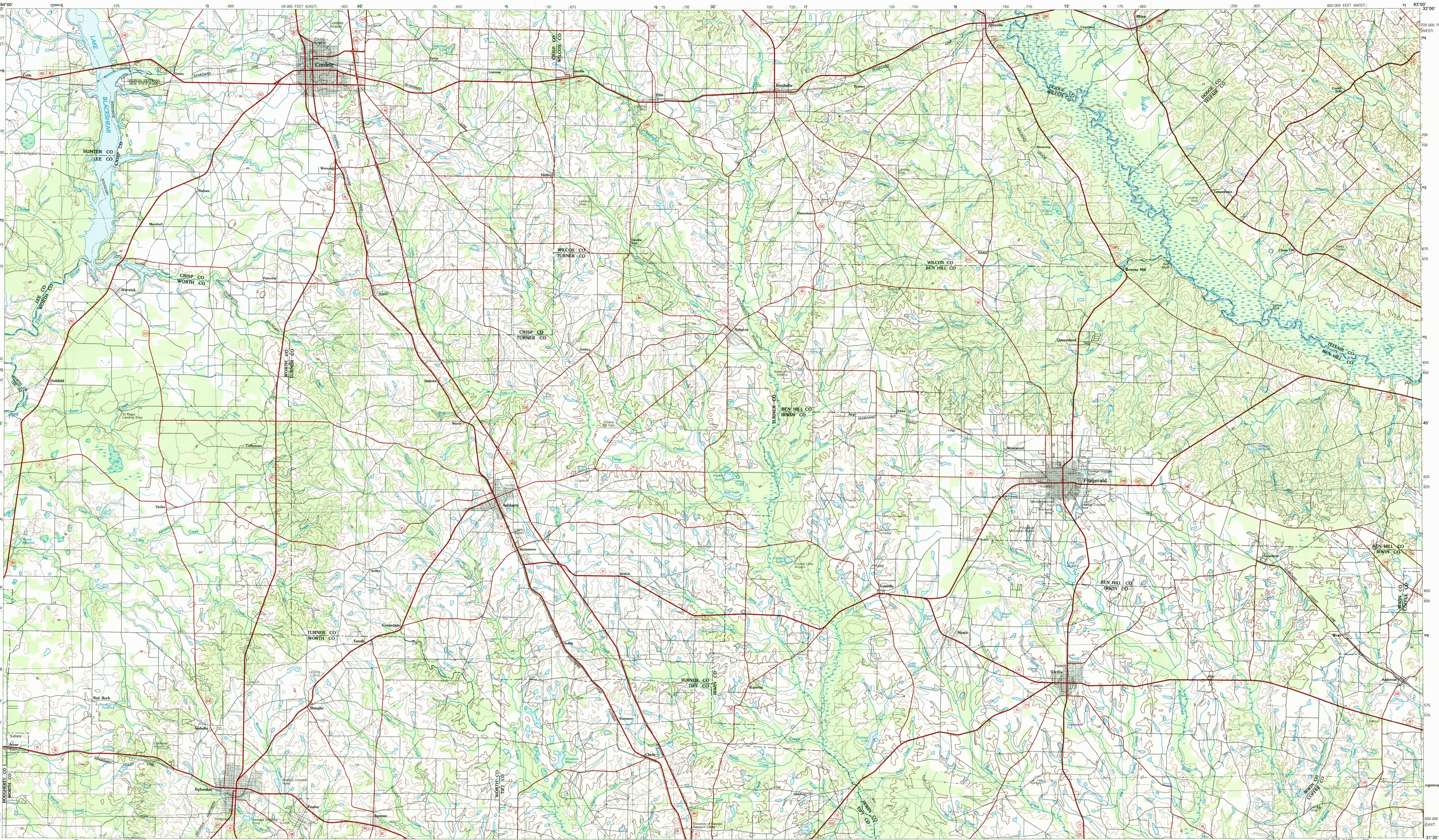
U.S. public lands survey: range, township, section
Range, township, section line: projected
Power transmission line, pipeline
Dam: dam with lock
Cemetery, building
Cemetery: well, spring
Mine shaft, adit or cave, mine, quarry, gravel pit
Campground, picnic area; U. S. location monument
Ruins; cliff dwelling
Distorted surface: strip mine, lava, sand
Contour: index, intermediate, supplementary
Bathymetric contours: index, intermediate
Stream, lake: perennial; intermittent
Rapid, large and small; falls, large and small
Area to be submerged; marsh, swamp
Land subject to controlled inundation; woodland
Sedge; mangrove
Orchard; vineyard

FOR SALE BY U. S. GEOLOGICAL SURVEY
RESTON, VIRGINIA 22092

Topographic Map Symbols

Primary highway, hard surface	
Secondary highway, hard surface	
Light duty road, principal street, hard or improved surface	
Other road or street, trail	
Route marker: Interstate; U. S.; State	
Railroad: standard gage; narrow gage	
Bridge: overpass; underpass	
Tunnel: road; railroad	
Built up area; locality; elevation	
Airport; landing field; landing strip	
National boundary	
State boundary	
County boundary	
National or State reservation boundary	
Land grant boundary	
U. S. public lands survey: range, township, section	
Range, township, section line: projected	
Power transmission line; pipeline	
Dam: dam with lock	
Cemetery, building	
Cemetery: well, spring	
Mine shaft, adit or cave, mine, quarry, gravel pit	
Campground; picnic area; U. S. location monument	
Ruins; cliff dwelling	
Distorted surface: strip mine, lava, sand	
Contour: index, intermediate, supplementary	
Bathymetric contours: index, intermediate	
Stream, lake: perennial; intermittent	
Rapid, large and small; falls, large and small	
Area to be submerged; marsh, swamp	
Land subject to controlled inundation; woodland	
Sedge; mangrove	
Orchard; vineyard	

A pamphlet describing topographic maps is available on request



CORDELE, GEORGIA
N3130-W8300/30 X 60