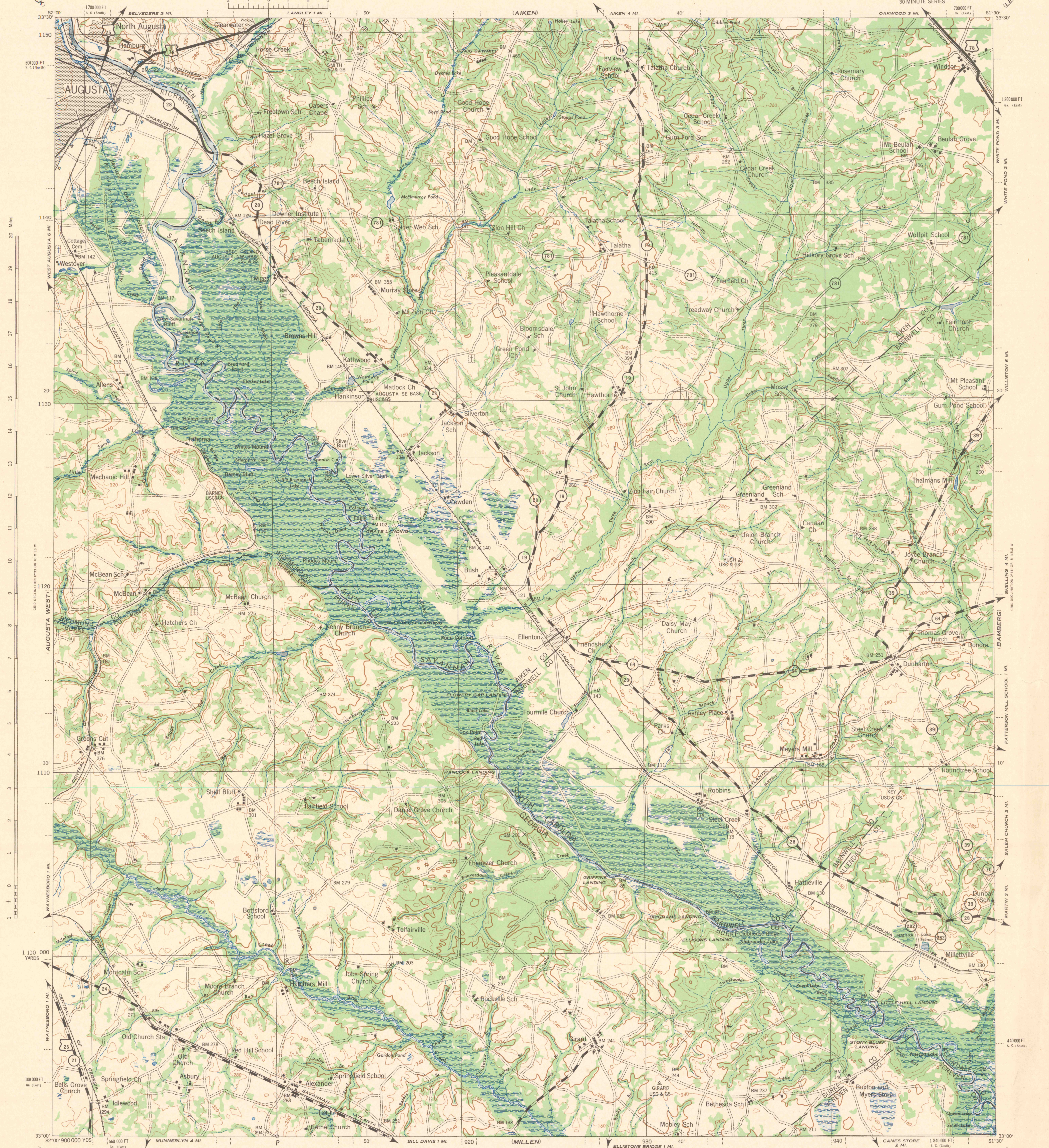


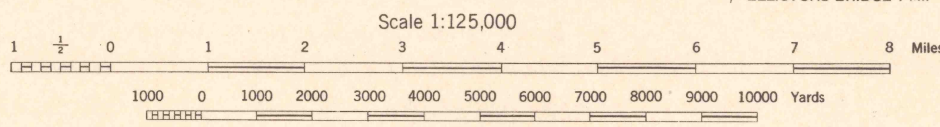
IMC CORNICK

LEXINGTON



First Edition 1943

Prepared under the direction of the Chief of Engineers, U. S. Army, 1943.  
By Army Map Service, (S), U. S. Army, Washington, D. C., 1943.  
Redrafted from Tactical Maps, 1942.  
This map is issued without final edit pending publication of new map.  
Polyconic Projection, North American Datum 1927.



CONTOUR INTERVAL 40 FEET  
DATUM IS MEAN SEA LEVEL

TEN THOUSAND YARD GRID COMPUTED FROM "GRID SYSTEM FOR PROGRESSIVE MAPS IN THE U. S. ZONE II, U. S. C. & G. S. SPECIAL PUBLICATION NO. 99"

THE LAST THREE DIGITS OF THE GRID NUMBERS ARE OMITTED  
THE STATE GRID FOR SOUTH CAROLINA SOUTH LINE ARE INDICATED BY DOTTED LINES  
FOR GEORGIA EAST ZONE BY DASHED LINES OTHER THAN THAT LINE AT 8000 FOOT INTERVALS

NOTE: OFFICERS USING THIS MAP WILL MARK DETECTION CORRECTIONS AND ADDITIONS WHICH COME TO THEIR ATTENTION AND MAIL DIRECT TO THE CHIEF OF ENGINEERS, WASHINGTON, D. C.

APPROXIMATE MEAN DECLINATION 1943  
FOR CENTER OF SHEET  
ANNUAL MAGNETIC CHANGE "INCREASE"  
USE DIAGRAM ONLY TO OBTAIN NUMERICAL VALUES.  
TO DETERMINE MAGNETIC NORTH LINE, CONNECT THE POINT "P" ON THE SOUTH EDGE OF THE MAP WITH THE VALUE OF THE ANGLE BETWEEN GRID NORTH AND MAGNETIC NORTH, AS PLOTTED ON THE DEGREE SCALE OF THE NORTH EDGE OF THE MAP.

ROAD CLASSIFICATION 1943

Dependable hard-surface, heavy duty road. Loose-surface road, dry weather. U. S. Route. State Route. 3 LANE 4 LANE

Secondary hard-surface, all-weather road. Dirt road. More than two lanes indicated by note along road with tick at point of change.

AUGUSTA EAST, GA. - S. C.  
N3300 - W6130/30

scarolina