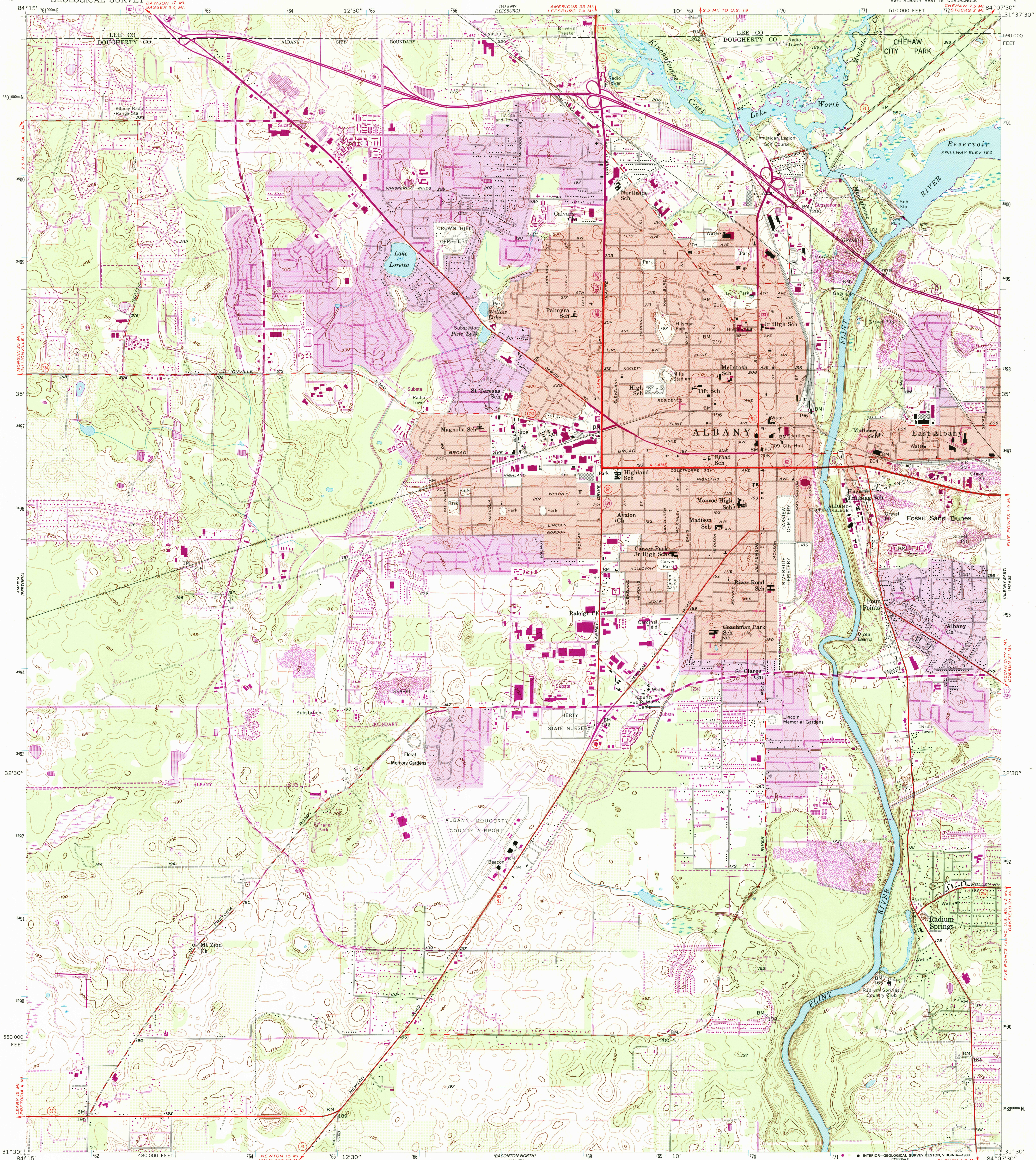
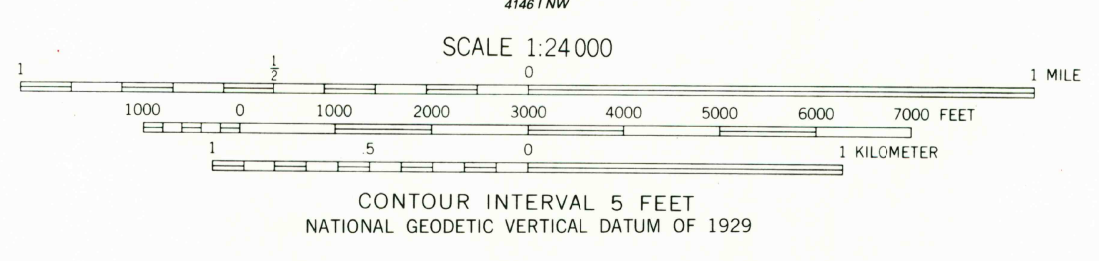
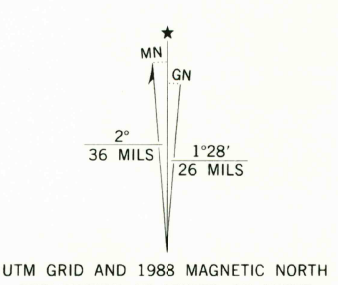


UNITED STATES
DEPARTMENT OF THE INTERIOR
GEOLOGICAL SURVEY

ALBANY WEST QUADRANGLE
GEORGIA
7.5 MINUTE SERIES (TOPOGRAPHIC)



Mapped, edited, and published by the Geological Survey
Control by USGS, USC&GS, USCE, and Georgia Geodetic Survey
Culture and drainage in part compiled from aerial photographs
taken 1955. Topography by planetable surveys 1956
Polyconic projection. 1927 North American datum
10,000-foot grid based on Georgia coordinate system, west zone
1000-meter Universal Transverse Mercator
grid ticks, zone 16, shown in blue
To place on the predicted North American Datum 1983 move
the projection lines 16 meters south and 10 meters west as
shown by dashed corner ticks
Fine red dashed lines indicate selected fence and field lines where
generally visible on aerial photographs. This information is unchecked
Red tint indicates areas in which only landmark
buildings are shown



USGS MMD HISTORICAL MAP MAR 09 1989 REC'D FILE COPY

ROAD CLASSIFICATION

Heavy-duty	Light-duty
Medium-duty	Unimproved dirt
U.S. Route	State Route

QUADRANGLE LOCATION

THIS MAP COMPLIES WITH NATIONAL MAP ACCURACY STANDARDS
FOR SALE BY U.S. GEOLOGICAL SURVEY
DENVER, COLORADO 80225 OR RESTON, VIRGINIA 22092
A FOLDER DESCRIBING TOPOGRAPHIC MAPS AND SYMBOLS IS AVAILABLE ON REQUEST

Revisions shown in purple and woodland compiled in cooperation with
State of Georgia agencies from aerial photographs taken 1983 and
other sources. This information not field checked. Map edited 1988
Purple tint indicates extension of urban areas

ALBANY WEST, GA.
SW4 ALBANY WEST 15' QUADRANGLE
31084-E2-TF-024
1956
PHOTOREVISED 1988
DMA 4147 II SW-SERIES V845