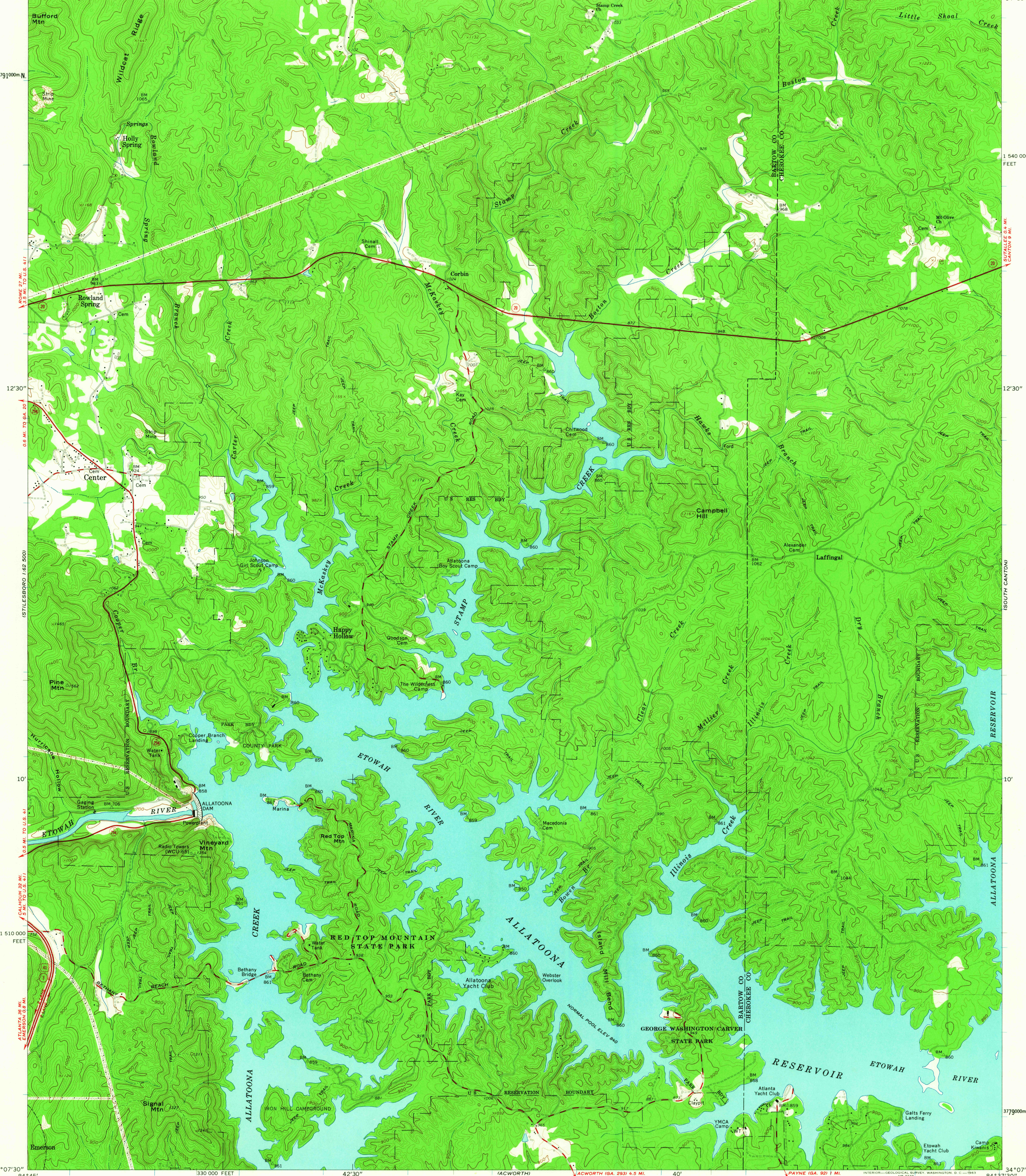
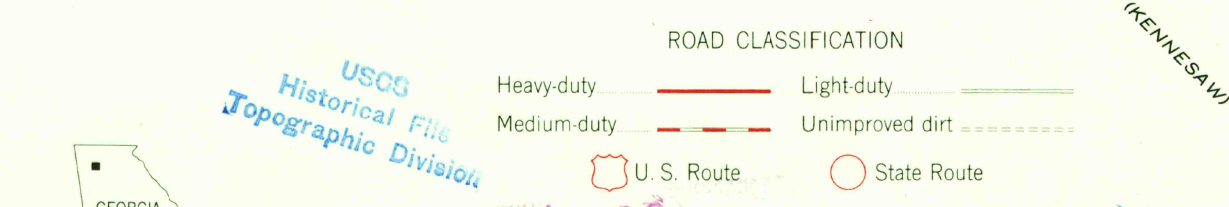
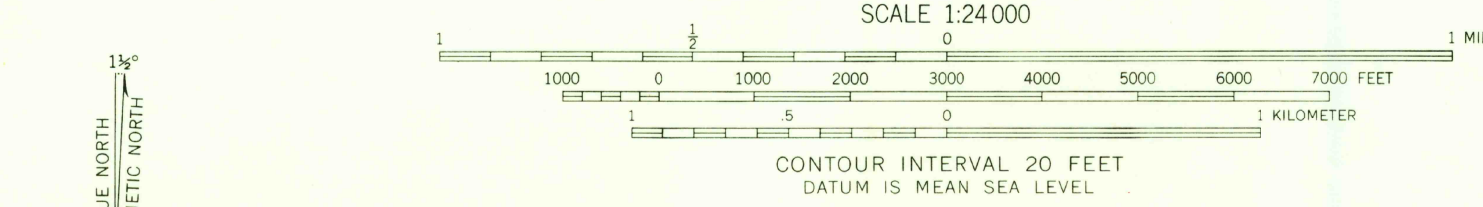


84°45' 42'30" 40' 34°15' (WALESKA 1:62 500) WHITE (U.S. 411) 4.4 MI. 360 000 FEET 84°37'30" 34°15'



Mapped, edited, and published by the Geological Survey
Control by USGS, USC&GS, USCE, and Georgia Geodetic Survey
Topography by photogrammetric methods from aerial
photographs taken 1956. Field checked 1961
Polyconic projection. 1927 North American datum
10,000-foot grid based on Georgia coordinate system, west zone
1000-meter Universal Transverse Mercator grid ticks,
zone 16, shown in blue
Reservation boundary from maps by U. S. Corps of Engineers



THIS MAP COMPLIES WITH NATIONAL MAP ACCURACY STANDARDS
FOR SALE BY U. S. GEOLOGICAL SURVEY, WASHINGTON 25, D. C.
A FOLDER DESCRIBING TOPOGRAPHIC MAPS AND SYMBOLS IS AVAILABLE ON REQUEST

USGS Historical File Topographic Division
U.S.G.S. ALLATOONA DAM, GA.
NW/4 ACWORTH 15' QUADRANGLE
N3407.5-W8437.5/7.5
1961