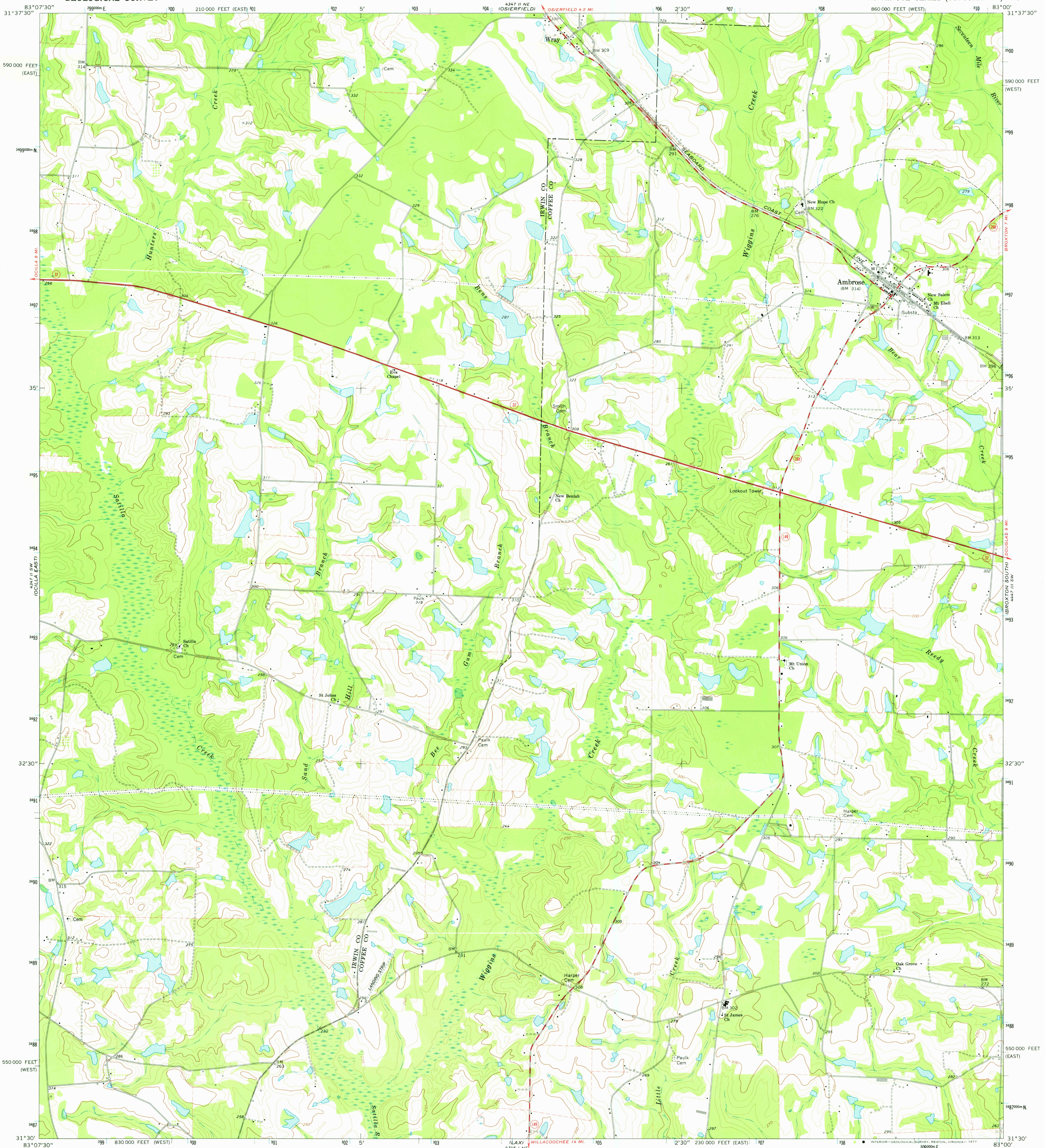
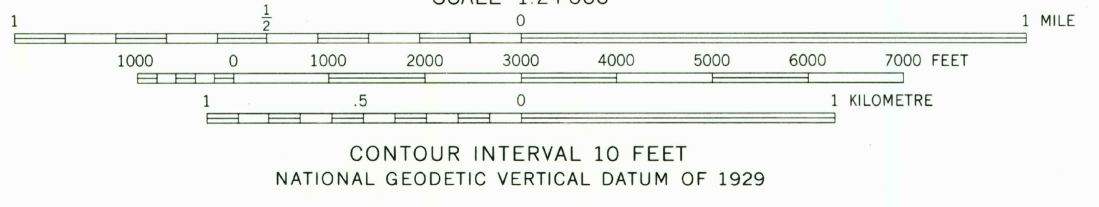
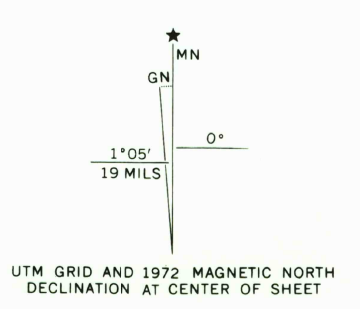


UNITED STATES
DEPARTMENT OF THE INTERIOR
GEOLOGICAL SURVEY

AMBROSE QUADRANGLE
GEORGIA
7.5 MINUTE SERIES (TOPOGRAPHIC)



Mapped, edited, and published by the Geological Survey
Control by USGS, NOS/NOAA, and Georgia Geodetic Survey
Topography by photogrammetric methods from aerial
photographs taken 1971. Field checked 1972
Projection: Georgia coordinate system, west zone
(transverse Mercator)
10,000-foot grid ticks based on Georgia coordinate
system, west and east zones
1000-metre Universal Transverse Mercator grid ticks,
zone 17, shown in blue. 1927 North American datum
Fine red dashed lines indicate selected fence and field lines where
generally visible on aerial photographs. This information is unchecked



THIS MAP COMPLIES WITH NATIONAL MAP ACCURACY STANDARDS
FOR SALE BY U.S. GEOLOGICAL SURVEY, RESTON, VIRGINIA 22092
A FOLDER DESCRIBING TOPOGRAPHIC MAPS AND SYMBOLS IS AVAILABLE ON REQUEST



ROAD CLASSIFICATION	
Primary highway, hard surface	Light-duty road, hard or improved surface
Secondary highway, hard surface	Unimproved road
Interstate Route	U.S. Route
	State Route

USGS
Historical File
Topographic Division
AMBROSE, GA. N3130-WB900/7.5
1972 AUG 26 1977
AMS 4347 II SE—SERIES V845

2800