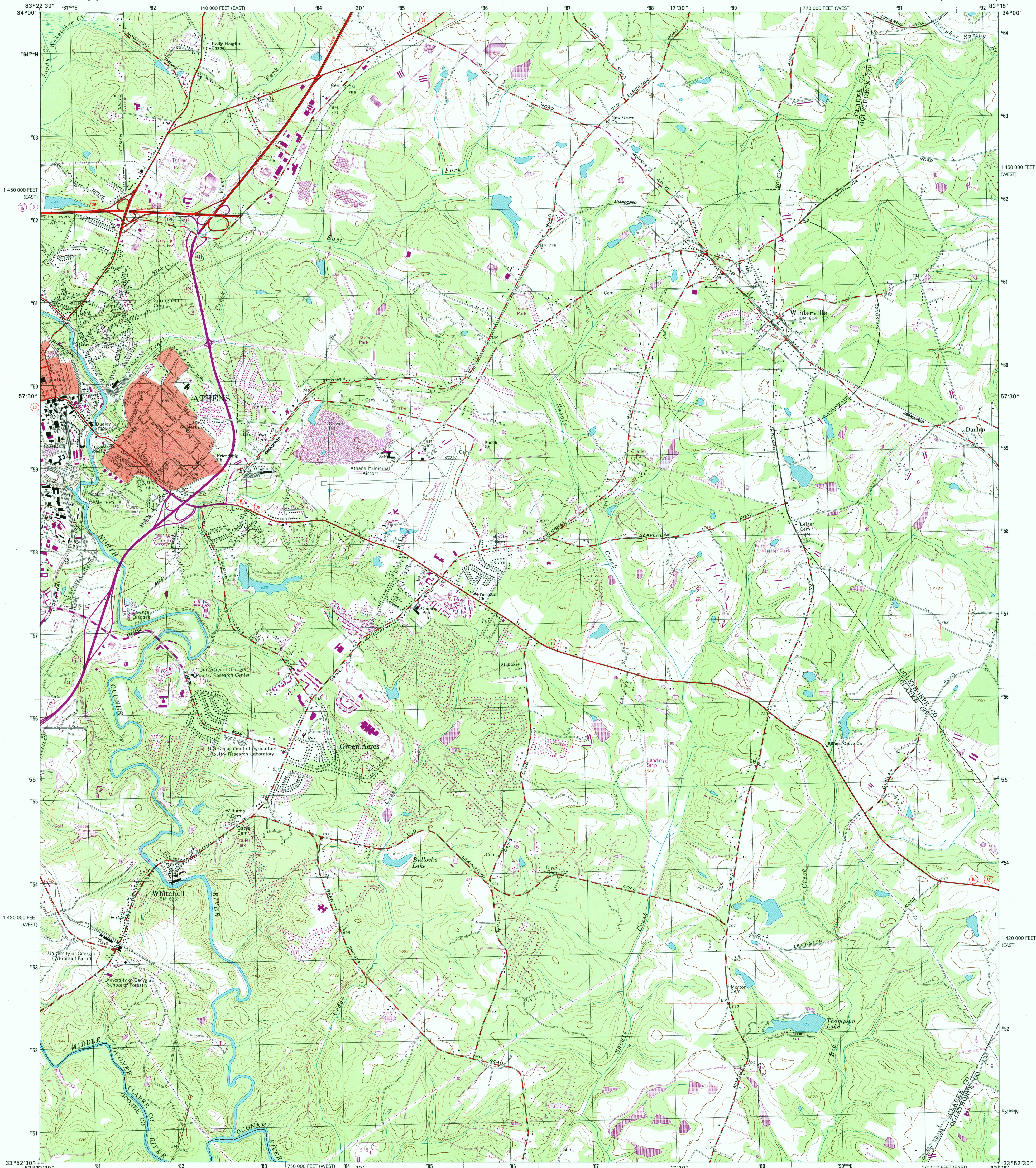


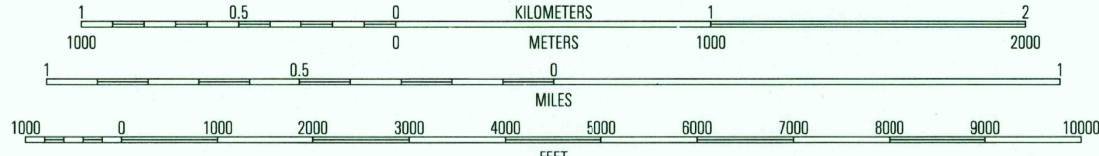
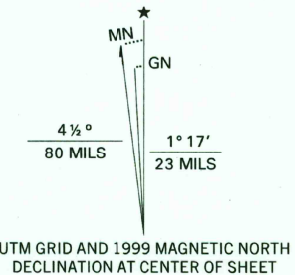


U.S. DEPARTMENT OF THE INTERIOR  
U.S. GEOLOGICAL SURVEY

ATHENS EAST QUADRANGLE  
GEORGIA  
7.5-MINUTE SERIES (TOPOGRAPHIC)



Produced by the United States Geological Survey  
Topography compiled 1962. Planimetry derived from imagery taken 1981 and other sources. Photoinspected using imagery dated 1998; no major culture or drainage changes observed. Survey control current as of 1964. Boundaries, other than corporate, verified 1999  
North American Datum of 1927 (NAD 27)  
Projection: Georgia coordinate system, west zone (Lambert conformal conic)  
10 000-foot ticks: Georgia coordinate system, west and east zones  
1000-meter Universal Transverse Mercator grid, zone 17  
North American Datum of 1983 (NAD 83) is shown by dashed corner ticks. The values of the shift between NAD 27 and NAD 83 for 7.5-minute intersections are obtainable from National Geodetic Survey NADCON software  
Information shown in purple may not meet USGS content standards and may conflict with previously mapped contours



SCALE 1:24 000  
CONTOUR INTERVAL 20 FEET  
NATIONAL GEODETIC VERTICAL DATUM OF 1929  
TO CONVERT FROM FEET TO METERS, MULTIPLY BY 0.3048

THIS MAP COMPLIES WITH NATIONAL MAP ACCURACY STANDARDS  
FOR SALE BY U.S. GEOLOGICAL SURVEY, P.O. BOX 25286, DENVER, COLORADO 80225  
A FOLDER DESCRIBING TOPOGRAPHIC MAPS AND SYMBOLS IS AVAILABLE ON REQUEST



1	2	3
4	5	6
7	8	9

ROAD CLASSIFICATION  
Primary highway hard surface .....  
Secondary highway hard surface .....  
Light-duty road, hard or improved surface .....  
Unimproved road .....  
Interstate Route  
U.S. Route  
State Route

RECEIVED  
MAY 31 1999

USGS NMD  
HISTORICAL MAP ARCHIVES  
ATHENS EAST, GA  
1998

NIMA 4351 IV NE-SERIES V845

