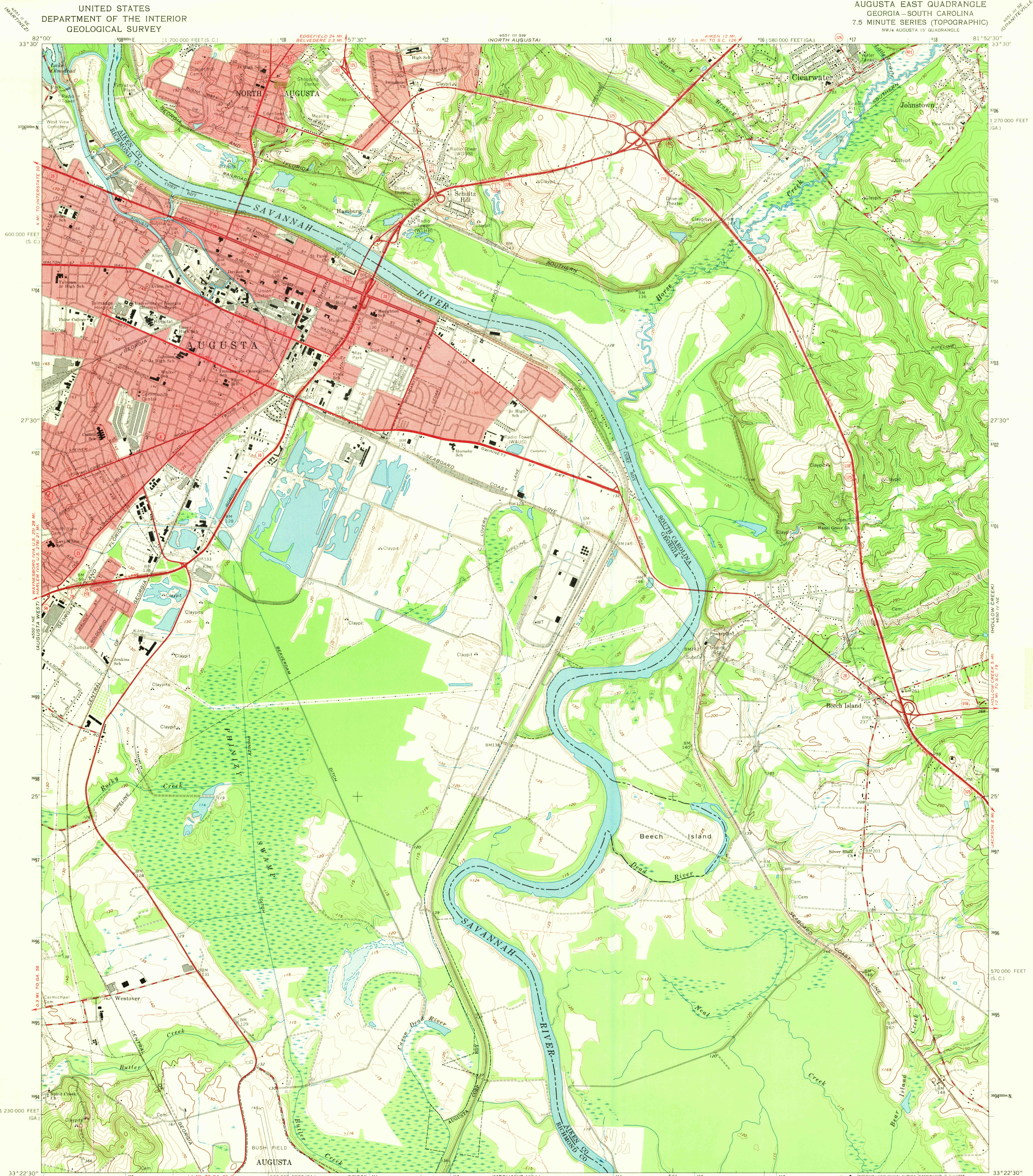
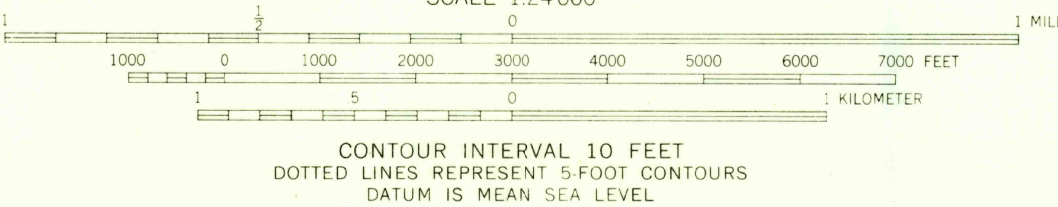
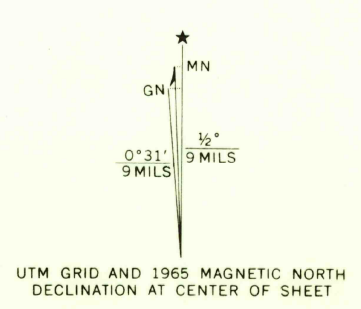


UNITED STATES
DEPARTMENT OF THE INTERIOR
GEOLOGICAL SURVEY

AUGUSTA EAST QUADRANGLE
GEORGIA—SOUTH CAROLINA
7.5 MINUTE SERIES (TOPOGRAPHIC)
NW/4 AUGUSTA 15 QUADRANGLE



Maped, edited, and published by the Geological Survey
Control by USGS, USC&GS, USCE, Georgia Geodetic Survey, and
South Carolina Geodetic Survey
Topography by photogrammetric methods from aerial
photographs taken 1962. Field checked 1965
Polyconic projection. 1927 North American datum
10,000-foot grids based on Georgia coordinate system, east zone,
and South Carolina coordinate system, south zone
1000-meter Universal Transverse Mercator grid ticks,
zone 17, shown in blue
Fine red dashed lines indicate selected fence and field lines where
generally visible on aerial photographs. This information is unchecked
Red tint indicates areas in which only landmark buildings are shown



USGS
Historical File
Topographic Division



U.S.G.S.
FILE COPY
TOPOGRAPHIC DIVISION

ROAD CLASSIFICATION
Heavy-duty ——— Light-duty ———
Medium-duty ——— Unimproved dirt ———
U.S. Route ——— State Route ———

AUGUSTA EAST, GA.—S.C.
NW/4 AUGUSTA 15 QUADRANGLE
N3322.5—W8152.5/7.5

1965
AMS 4650 IV NW—SERIES V845

3315
MAY 2 1969