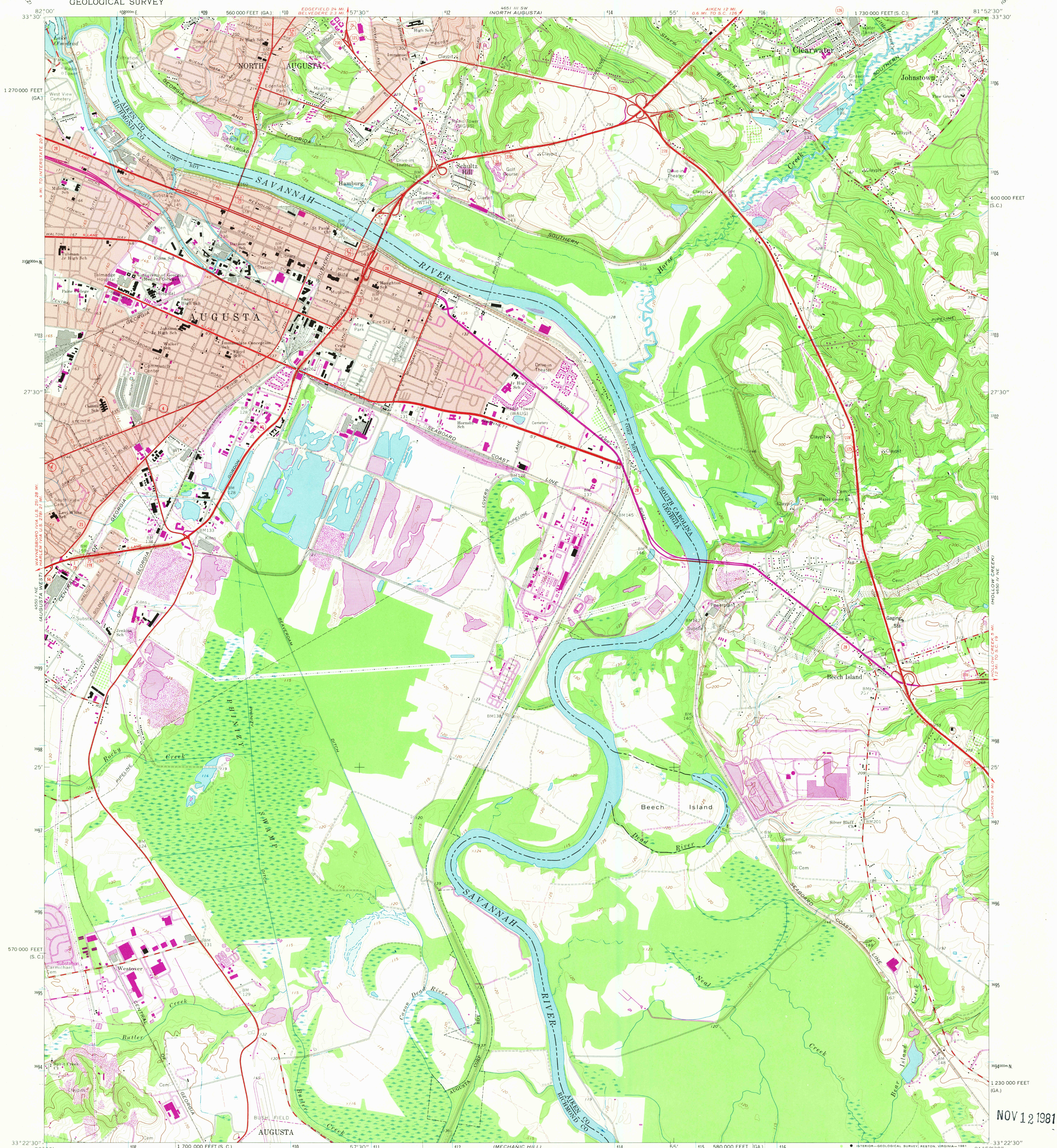


UNITED STATES
DEPARTMENT OF THE INTERIOR
GEOLOGICAL SURVEY

AUGUSTA EAST QUADRANGLE
GEORGIA—SOUTH CAROLINA
7.5 MINUTE SERIES (TOPOGRAPHIC)



Mapped, edited, and published by the Geological Survey

Control by USGS, NOS/NOAA, USCE, Georgia Geodetic Survey
and South Carolina Geodetic Survey

Topography by photogrammetric methods from aerial
photographs taken 1962. Field checked 1965

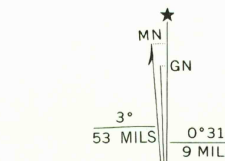
Polyconic projection. 10,000-foot grid based on South
Carolina coordinate system, south zone

and Georgia coordinate system, east zone
1000-meter Universal Transverse Mercator grid ticks,
zone 17, shown in blue. 1927 North American Datum

To place on the predicted North American Datum 1983
move the projection lines 13 meters south and
15 meters west as shown by dashed corner ticks

Fine red dashed lines indicate selected fence and field lines where
generally visible on aerial photographs. This information is unchecked

Red tint indicates areas in which only landmark buildings are shown



UTM GRID AND 1981 MAGNETIC NORTH
DECLINATION AT CENTER OF SHEET

SCALE 1:24,000

CONTOUR INTERVAL 10 FEET
DOTTED LINES REPRESENT 5-FOOT CONTOURS
NATIONAL GEODETIC VERTICAL DATUM OF 1929

THIS MAP COMPLIES WITH NATIONAL MAP ACCURACY STANDARDS
FOR SALE BY U. S. GEOLOGICAL SURVEY, RESTON, VIRGINIA 22092
A FOLDER DESCRIBING TOPOGRAPHIC MAPS AND SYMBOLS IS AVAILABLE ON REQUEST



QUADRANGLE LOCATION

Revisions shown in purple compiled from aerial photographs
taken 1977 and other sources. This information not
field checked. Map edited 1981
Purple tint indicates extension of urban areas

ROAD CLASSIFICATION			
Primary highway, all weather, hard surface	Light-duty road, all weather, improved surface	Interstate Route	U. S. Route
Secondary highway, all weather, hard surface	Unimproved road, fair or dry weather	State Route	

AUGUSTA EAST, GA.—S. C.

N3322.5—W8152.5/7.5

1965
PHOTOREVISED 1981

DMA 4650 IV NW—SERIES V846

NOV 12 1981